

# PACFIRE



## PRODUCT CATALOGUE



## ABOUT US

Pac Fire was established in 2000 with the founding vision of supplying the highest quality Personal Protective Equipment & Clothing (PPE/C) to Australia's emergency services.

This core motivation has led Pac Fire to represent the standard for excellence in the PPE/C industry. Pac Fire's success is closely tied to two fundamental principles of dependable quality and exceptional performance.

Over the years, Pac Fire's range has grown to include over 500 individual products sourced from iconic brands such as Pacific Helmets, Bristol Uniforms, Icebreaker, Kappler, Kestrel, BlowHard, OSW, Pok, Underwater Kinetics, Adaro, YDS, Meret, Responder Wipes, SC Products and more.

In a continuing commitment to protecting responder health and well being, and ensuring longevity of PPE/C, Pac Fire established PAC+CARE in early 2018. This flexible managed service utilises the latest in laundering technology and includes a state of the art filtration system ensuring contaminants removed from clothing and equipment whilst protecting the environment.

Today, Pac Fire has distribution centres located on Queensland's Gold Coast, Kurralt Park, Adelaide and Whanganui on New Zealand's North Island. These distribution points in combination with comprehensive sales representation, deliver paramount customer service to the Australasian region.

Whilst the business has grown, the tradition of providing emergency service workers with the highest quality protective clothing and equipment is maintained.

## CONTACT US

PHONE

**1300 731 800**

*from within Australia*

**+61 7 3441 7100**

*international calls*

FAX

**(07) 3441 7177**

*from within Australia*

**+61 7 3441 7177**

*international*

EMAIL

**SALES@PACFIRE.COM.AU**

WEBSITE

**WWW.PACFIRE.COM.AU**

## OUR LOCATIONS

QUEENSLAND BRANCH

62 Link Dr  
YATALA QLD 4207

PH: **+61 7 3441 7100**

SOUTH AUSTRALIA BRANCH

4/48 Barwell Ave  
KURRALTA PARK SA 5037

PH: **+61 8 8297 1477**

NEW ZEALAND BRANCH

315 Heads Rd  
WHANGANUI 4541 NEW ZEALAND

PH: **+64 6 344 7391**



## HELMETS 5-26

|                                 |       |
|---------------------------------|-------|
| STRUCTURAL FIREFIGHTING HELMETS | 8-12  |
| WILDLAND FIREFIGHTING HELMETS   | 13-15 |
| RESCUE HELMETS                  | 16-19 |
| LIGHTING OPTIONS                | 20-21 |
| ACCESSORIES                     | 22-23 |
| HELMET COMMUNICATIONS           | 24-25 |

## PROTECTIVE CLOTHING 27-52

|                                  |       |
|----------------------------------|-------|
| STRUCTURAL FIREFIGHTING GARMENTS | 32-39 |
| WILDLAND FIREFIGHTING GARMENTS   | 40-41 |
| TECHNICAL RESCUE GARMENTS        | 40-43 |
| FLASH HOODS                      | 46-49 |
| ACCESSORIES                      | 50-51 |

## GLOVES 53-58

|                                |       |
|--------------------------------|-------|
| STRUCTURAL FIREFIGHTING GLOVES | 54-56 |
| WILDLAND FIREFIGHTING GLOVES   | 56-57 |
| TECHNICAL RESCUE GLOVES        | 57    |

## FOOTWEAR 59-64

|                               |       |
|-------------------------------|-------|
| STRUCTURAL FIREFIGHTING BOOTS | 60-63 |
| WILDLAND FIREFIGHTING BOOTS   | 63    |

## LIGHTING, TORCHES & ACCESSORIES 65-70

## BEACONS 71-76

## FANS & VENTILATION 77-79

## HOSE & FITTINGS 80-84

## CHEMICAL & PROTECTIVE SUITS 85-88

## FOAM 89-92

## BAGS & STORAGE OPTIONS 93-102

## MEDICAL BAGS 103-108

## TOOLS & ACCESSORIES 109-124

|                             |         |
|-----------------------------|---------|
| QUICK FIST CLAMPS           | 110-111 |
| DRIP TORCH                  | 112     |
| GENFO FIREFIGHTING BACKPACK | 112     |
| RESCUE MANNEQUINS / DUMMIES | 113-114 |
| AC HOT STICK                | 115     |
| JERRY CANS & ACCESSORIES    | 116-117 |
| WEATHER METERS              | 118-120 |
| TOOLS                       | 121-124 |

## CLEANING & RESPONDER HEALTH 125-132

## WHAT IS PAC+CARE? 133-137

## NOTES 138

|              |         |                |         |                |               |                      |          |                |         |                 |          |
|--------------|---------|----------------|---------|----------------|---------------|----------------------|----------|----------------|---------|-----------------|----------|
| A115210      | 97      | EFSBAG         | 76      | IPCSR25        | 83            | PACHSU25/30          | 82       | PRO1051        | 116,117 | RAKRMS-3/20+    | 101      |
| BAG2388      | 96      | EFSCLIP        | 76      | IPCSR38        | 83            | PACHSU38/30          | 82       | PRO1095        | 116,117 | RAKRWM          | 99       |
| BAG2388 BL   | 96      | FBASEAV        | 76      | IPCSR52        | 83            | PACHSU52/30          | 82       | PRO1096        | 116,117 | RAKRWM-1/20+    | 99       |
| BAG2388 RD   | 96      | FH33           | 49      | IPCSR65        | 83            | PACHSU65/30          | 82       | PRO1097        | 116,117 | RAKRWM-10/20+   | 99       |
| BAG5813      | 97      | FHPR9723ES     | 49      | IPST038        | 83            | PACHSU65/30          | 82       | PRO1150        | 116,117 | RAKRWM-11/20+   | 99       |
| BAG5814      | 97      | FHUFAP-6       | 122     | IPST052        | 83            | PACMONOFLEX OR 25/60 | 81       | PRO1151        | 116,117 | RAKRWM-12/20+   | 99       |
| BAG5816      | 96      | FHUHNC-30      | 122     | KL200          | 48, 128       | PF950                | 22       | PRO1152        | 116,117 | RAKRWM-13/20+   | 99       |
| BAG5816 BL   | 96      | FHUPUL-5       | 122     | L.1            | 20, 64        | PF950++              | 22       | PRO1153        | 116,117 | RAKRWM-14/20+   | 99       |
| BAG5816 RD   | 96      | FRONTLINE 500  | 88      | L.3000P        | 67            | PFTS950              | 22       | PRO1155        | 116,117 | RAKRWM-15/20+   | 99       |
| BAG5817      | 94      | FS-C           | 51, 132 | L.5000         | 66            | POK05010             | 83       | PRO1156        | 116,117 | RAKRWM-2/20+    | 99       |
| BAG5817 BL   | 94      | FS-C-001-4     | 51, 132 | L.5PLUS        | 20, 68        | POK09049             | 84       | PRO1157        | 116,117 | RAKRWM-3/20+    | 99       |
| BAG5817 RD   | 94      | FS-C-032-6     | 51, 132 | L.5PLUS.R      | 20, 68        | POK09718             | 84       | PRO1158        | 116,117 | RAKRWM-4/20+    | 99       |
| BAGPPC       | 98      | FWF2AR1352     | 63      | L.5PLUS.S      | 20, 68        | POK12697             | 84       | PRO1160        | 116,117 | RAKRWM-5/20+    | 99       |
| BAGMESH      | 98      | FWF2AR1354     | 60      | LCF5.1         | 66            | POK16005 MEN         | 84       | PRO1161        | 116,117 | RAKRWM-6/20+    | 99       |
| BCRPEL FW G  | 112     | FWF300GTXIN    | 63      | LTRLFH         | 114           | POK25399             | 83       | PRO1162        | 116,117 | RAKRWM-7/20+    | 99       |
| BRISTOLHOOD6 | 46, 129 | FWFSF8         | 62      | LTRLFH10       | 114           | POK25399+            | 83       | PRO1163        | 116,117 | RAKRWM-8/20+    | 99       |
| BRISTOLHOOD7 | 46, 129 | G8038W         | 56      | LTRLFH20       | 114           | POK25408             | 83       | PRO1165        | 116,117 | RAKRWM-9/20+    | 99       |
| C.1000       | 67      | GENFO 1200549  | 112     | LTRLFH30       | 114           | POK26076             | 84       | PRO1166        | 116,117 | RAKSEC-20+      | 99       |
| CS99402YE    | 87      | GESS           | 23      | LTRLFH5        | 114           | POK28712             | 84       | PRO1167        | 116,117 | RDM30           | 51       |
| DOT-01       | 98, 130 | GESS DS        | 23      | LTRLFH50       | 114           | POK6355              | 83       | PRO1168        | 116,117 | RDM30TV         | 51       |
| DOT-02       | 98, 130 | GESS GAD+      | 23      | LTRLFH70       | 114           | POK6355+             | 83       | PRO1172        | 116,117 | RF3             | 90       |
| DOT-02       | 130     | GESS GAS+      | 23      | LTRLN          | 113           | POK6356              | 83       | PRO1173        | 116,117 | RF3-1000        | 90       |
| EFS00CM      | 76      | GESS GCD+      | 23      | LTRLN10        | 113           | POK8179              | 83       | PRO1174        | 116,117 | RF3-20          | 90       |
| EFAI280      | 74      | GESS GCS+      | 23      | LTRLN20        | 113           | PPV8H-20DP           | 78, 79   | PRO1176        | 116,117 | RF3-200         | 90       |
| EFAI280A     | 74      | GESS GSD+      | 23      | LTRLN20A       | 113           | PRO094-1             | 116, 117 | PRO1177        | 116,117 | RF3X6           | 91       |
| EFAI280B     | 74      | GESS GSS+      | 23      | LTRLN30        | 113           | PRO0965              | 116, 117 | PRO1179        | 116,117 | RF3X6GATC       | 91       |
| EFAI280R     | 74      | GESS LA        | 23      | LTRLN5         | 113           | PRO0966              | 116, 117 | PRO1180        | 116,117 | RF3X6GATC200    | 91       |
| EFAI280W     | 74      | GESS LC        | 23      | LTRLN50        | 113           | PRO0967              | 116, 117 | PRO13300       | 116,117 | RF3X6GATC21000L | 91       |
| EFAI283      | 74      | GESS LS        | 23      | LTRLN70        | 113           | PRO0972              | 116, 117 | PRO13355       | 116,117 | RF6             | 91       |
| EFAI283AW    | 74      | GESS SS        | 23      | M22-000600     | 121           | PRO0973              | 116, 117 | PRO23300       | 116,117 | RF6-1000        | 91       |
| EFAI283RB    | 74      | GFSKCU         | 57      | M22-000622     | 121           | PRO0974              | 116, 117 | PRO23355       | 116,117 | RF6-20          | 91       |
| EFAI283RW    | 74      | GFWN3          | 56      | M5101          | 105           | PRO0980              | 116, 117 | PTT20          | 24      | RF6-200         | 91       |
| EFAI290      | 72      | GFWWCU         | 57      | M5101A         | 105, 108      | PRO0990C             | 116, 117 | QF10012        | 110     | RHS-2+          | 50       |
| EFAI290 A    | 72      | GFWWCW         | 57      | M5101C         | 105, 107, 108 | PRO0991C             | 116, 117 | QF20023        | 110     | RS1120          | 104      |
| EFAI290 B    | 72      | GHERCPL        | 56      | M5101F         | 105           | PRO0993C             | 116, 117 | QF30055        | 110     | RS1123          | 104      |
| EFAI290 G    | 72      | GHERCUL        | 56      | M5101HV        | 105           | PRO0995C             | 116, 117 | QF40023        | 111     | RW13160         | 126, 127 |
| EFAI290 R    | 72      | GTITAN49A      | 54      | M5101J         | 105, 108      | PRO1040              | 116, 117 | QF50052        | 111     | RW13460         | 126, 127 |
| EFAI293      | 72      | GXRESCUE       | 57      | M5101L         | 108           | PRO1040+             | 116, 117 | QF60023        | 110     | SC14F-032-6     | 27, 132  |
| EFAI293 BW   | 72      | HBR5 CVFS      | 15      | M5101TB        | 105           | PRO1040M             | 116, 117 | QF80023        | 111     | SF1000LHIEH     | 92       |
| EFAI293 RA   | 72      | HBR9           | 13      | M5107          | 108           | PRO1041              | 116, 117 | RAKHC-64-2T    | 102     | SF200LHIEH      | 92       |
| EFAI293 RB   | 72      | HBR9SCVMF      | 14      | M5107-PC       | 108           | PRO1041+             | 116, 117 | RAKHC-64-3T    | 102     | SF20LHIEH       | 92       |
| EFAI293 RW   | 72      | HBR9SCVMF      | 13      | M5108FN        | 107           | PRO1041M             | 116, 117 | RAKPPE/2G      | 131     | SFB3150A        | 92       |
| EFAI700      | 74      | HBR9WBCVMF     | 14      | M5108FNHV      | 107           | PRO1042              | 116, 117 | RAKPPE-EW      | 131     | SFB3150A 1000L  | 92       |
| EFAI700A     | 74      | HF10           | 11      | M5108TB        | 107           | PRO1042+             | 116, 117 | RAKMHD-80      | 102     | SFB3150A 200L   | 92       |
| EFAI700B     | 74      | HF10 MKV       | 11      | M5108TBN       | 107           | PRO1042M             | 116, 117 | RAKRFD5        | 99      | SFHIEH          | 92       |
| EFAI700G     | 74      | HF10 MKVGEN2   | 11      | MK0805         | 120           | PRO1043              | 116, 117 | RAKRFD5-4/20+  | 99      | UKT10034+       | 21       |
| EFAI700R     | 74      | HFTOMK3        | 11      | MK3000         | 118, 119      | PRO1043+             | 116, 117 | RAKRFD5-6/20+  | 99      | UKT10034+       | 69       |
| EFAI700W     | 74      | HF11           | 10      | MK3500         | 120           | PRO1043M             | 116, 117 | RAKRFD5        | 99      | UKT14506        | 21       |
| EFAI730      | 74      | HF11 EP GEN2   | 10      | MM20           | 24            | PRO1044              | 116, 117 | RAKRFD5-10/20+ | 99      | UKT14506        | 69       |
| EFAI730RB    | 74      | HF15           | 8, 9    | MVLC-08623.MVN | 123           | PRO1044+             | 116, 117 | RAKRFD5-15/20+ | 99      | UKT17018        | 22       |
| EFBASE       | 76      | HF15 OTEP GEN2 | 8, 9    | MZPF920CA      | 23            | PRO1044M             | 116, 117 | RAKRFD5-2/20+  | 99      | UKT17018        | 70       |
| EFEMS++      | 75      | HF3DMK2        | 12      | PAC DH-TC45    | 124           | PRO1045              | 116, 117 | RAKRFD5-3/20+  | 99      | UKT22101        | 70       |
| EFEMS++ RA   | 75      | HR55           | 19      | PAC DH-TC70    | 124           | PRO1045+             | 116, 117 | RAKRFD5-5/20+  | 99      | UKT514609-7A    | 21       |
| EFEMS++ RB   | 75      | HR6CFS         | 18      | PAC DH-WC1+    | 124           | PRO1045M             | 116, 117 | RAKRFD5-6/20+  | 99      | UKT514609-7A    | 69       |
| EFEMS++ RW   | 75      | HR6DOM         | 18      | PAC RAMP75     | 121           | PRO1046              | 116, 117 | RAKRMD5        | 101     | UKT514703       | 70       |
| EFHOOD2      | 76      | HR6R PRV5      | 19      | PACHSSE25/30   | 82            | PRO1046+             | 116, 117 | RAKRMD5 4/20+  | 101     | UKT530084       | 123      |
| EFMAGBASE    | 76      | HR6V           | 16, 17  | PACHSSE38/30   | 82            | PRO1046M             | 116, 117 | RAKRMD5 6/20+  | 101     | ZYTRON 400      | 87       |
| EFMAGCLIP    | 76      | HSBN900502     | 115     | PACHSSSHV25/30 | 81            | PRO1048              | 116, 117 | RAKRMS         | 101     | ZYTRON 500      | 86       |
| EFMBAG       | 76      | HUC5           | 25      | PACHSSSHV38/30 | 81            | PRO1050              | 116, 117 | RAKRMS-2/20+   | 101     | ZYTX010YE       | 123      |



# HELMETS & ACCESSORIES



## PACIFIC HELMETS

In 1980, Pacific Helmets was established as a manufacturer of quality Motorcycle Helmets based in Whanganui on the North Island of New Zealand. In 1984, the focus of the Company began to shift in line with the development of the F2 Structural Firefighting Helmet and its inception into the New Zealand Firefighting Service.

Over the years that followed the development of the F2, Pacific Helmets has gained certification from all reputable safety standards organisations globally.

Pacific Helmets now specialises in manufacturing and exporting safety helmet products that balance paramount protection with design functionality and wearer comfort.

Flexible manufacturing processes and an innovative design team allow Pacific Helmets to offer customers the ability to customise helmets to suit their exact requirements and preferences.

Today, Pacific's range exceeds 100 individual helmet models with thousands of options for customisation to meet both individuals and services needs.

## ACHIEVEMENTS & MILESTONES

- 1980** Pacific Helmets was founded and began selling Motorcycle Helmets to the Australasian market
- 1984** With the development of the Pacific F2, Pacific Helmets tenders for, and wins, the supply of Structural Firefighting Helmets into the New Zealand Fire Service
- 1986** Pacific Helmets start to manufacture Bicycle Helmets ahead of law being passed in 1994 to make them compulsory in New Zealand
- 1990** Awarded the tender for supply of Structural Firefighting Helmets for London Fire Brigade with the Pacific F3. A win which would spark a major take up of the Pacific Helmets brand across England and the greater United Kingdom.
- 1993** Following the adoption of the F3 by the London Fire Brigade, Pacific Helmets were awarded the supply of Structural Firefighting Helmets for Hong Kong Fire Department
- 1995** Pacific Helmets starts supplying helmets to the British Ambulance Service including Northern Ireland



- 1997** Most metropolitan and some country Fire Services across Australia start purchasing Pacific Structural and Wildland helmets
- 2000** A specialised range of rescue helmets is developed and launched including the R7 and R5 which is still one of the most popular rescue helmets on the market today
- 2000** The Australian SES adopts the new Pacific R5 Rescue Helmet. The R5 is still the helmet of choice for the SES today, 18 years later
- 2008** Revolutionary OTEP™ (One Touch Eye Protector) developed by Pacific Helmets for introduction into selected Structural Firefighting Helmets
- 2015** Pacific Helmets wins the SILVER award at the Best Design Awards (NZ) for the F10 Mk5 Structural Firefighting Helmet
- 2015** After years of research and development the Pacific F15 is released, creating industry excitement
- 2016** Pacific Helmets wins the GOLD award at the Best Design Awards (NZ) for the R6R Rescue Helmet
- 2017** Pacific Helmets wins the SILVER award at the Best Design Awards (NZ) for the F15 Structural Firefighting Helmet
- 2017** A revolution in water safety is developed by Pacific Helmets. The R6V MkII 'Seeker', designed specifically for water rescue and water recreation is released
- 2018** Pacific Helmets is nominated for the 'International Achievement of the Year' award, which has come as a result of the establishment of distribution networks in China, and opening an office in the Netherlands





Best Design Awards  
Winner 2017



## HELMET FEATURES

- 1** DuPont™ Kevlar® & fibreglass reinforced composite shell
- 2** Advanced polymer chassis
- 3** GEN2 full cranium polyurethane impact liner
- 4** 6-point Ribbon suspension system with padded air mesh
- 5** 4-point Nomex® chin strap with leather cheek padding
- 6** Quick release buckle
- 7** Flame resistant Nomex® neck protector
- 8** Pacific ratchet adjustable headband with pivot nape strap
- 9** Dual pivot face shield
- 10** OTEP™ (One Touch Eye Protector)

- 11** Reflective trim
- 12** Two Easi On-Off Bases for torches (EOB)
- 13** Hands-free comms bracket
- 14** Rear storage hanger
- 15** Front plinth with reflectors
- 16** Adapter plates

| PRODUCT SPECIFICATIONS |  |  |
|------------------------|--|--|
| Product Code           | HF15 OTEP GEN2                                     |  |
| Application            | Structural Firefighting                            |  |
| Certification          | AS/NZS 4067:2012<br>EN443:2008*<br>NFPA 1971:2013* | EYEWEAR<br>CERTIFICATION<br>AS/NZS 1337.1:2010 |

\* Also available certified to:



## PACIFIC F15 STRUCTURAL FIREFIGHTING HELMET



The next generation in structural firefighting helmets is available from Pac Fire.

The Pacific Helmets F15 is the perfect combination of safety, comfort and quality protection.

Manufactured from the unique DuPont™ Kevlar® and fibreglass composite shell that has made Pacific Helmets synonymous with fire and rescue helmets.

This jet style design helmet is compatible with modern comms equipment and the clear face shield can be completely deployed over all major breathing apparatus masks.



OTEP™  
(ONE TOUCH EYE  
PROTECTOR)



COMMS  
COMPATIBLE





## PACIFIC F11 DRAGONFLY

The Pacific F11 offers a fresh take on structural firefighting helmet design. The F11 has been designed to maximise protection and practicality for the diverse range of duties modern Emergency Service personnel are called on to perform.

- DuPont™ Kevlar® & fibreglass reinforced composite shell
- Accentuated shell lines
- Easi On-Off Base for torch (EOB)
- Earmuff brackets
- Premium reflective trim
- GEN2 full cranium polyurethane impact liner
- Clear, clip on face shield
- Pull-down internal eye protection
- 4-point chin strap with leather cheek padding

- Pacific quick release buckle
- Rear storage hanger
- Flame resistant Nomex® neck protector
- Pacific ratchet adjustable headband with pivot nape strap
- 6-point ribbon cradle harness with padded air mesh

| PRODUCT SPECIFICATIONS |   |   |
|------------------------|---|---|
| Product Code           | HF11 EP GEN2  |   |
| Application            | Structural Firefighting   |   |
| Certification          | AS/NZS 4067:2012<br>*NFPA 1971:2013<br>*NFPA 1951:2013<br>*EN443:2008 | EYEWEAR CERTIFICATION<br>AS/NZS 1337.1:2010<br>ANSI Z87:2015<br>*EN166:2001 |

*\* Also available certified to:*



## PACIFIC F10 MKV

F10 MkV is incredibly lightweight, the shape and low ride height contribute to the balanced feel of the helmet. The accentuated longitudinal crest provides additional shock absorption and structural rigidity. Features like the internal bubble face shield and one-touch™ eye protection safeguards the eyes.

- DuPont™ Kevlar® & fibreglass reinforced composite shell
- Accentuated longitudinal crest
- Two Easi On-Off Bases for torches (EOB)
- Premium reflective trim
- GEN2 full cranium polyurethane impact liner
- Internal “bubble” face shield
- OTEP™ (One Touch Eye Protector)
- 3-point chin strap with leather cheek padding
- Pacific quick release buckle
- Rear storage hanger
- Flame resistant Nomex® neck protector
- Pacific ratchet adjustable headband
- 6-point ribbon cradle harness

| PRODUCT SPECIFICATIONS |   |  |
|------------------------|---|--|
| Product Code           | HF10 MKVGEN2  |  |
| Application            | Structural Firefighting   |  |
| Certification          | AS/NZS 4067:2012<br>*EN443:2008<br>*NFPA 1971:2013<br>*NFPA1951: 2013 | EYEWEAR CERTIFICATION<br>AS/NZS 1337.1:2010<br>ANSI Z87:2015<br>*EN166:2001<br>*EN14458:2004 |

\* Also available certified to:



## PACIFIC F10 MKIII

The F10 MkIII embodies Pacific’s core design philosophies of safety, quality, and comfort. Design features include internal bubble face shield and unique One Touch Eye Protector. Accentuated shell lines provide improved shock absorption and structural rigidity.

- DuPont™ Kevlar® & fibreglass reinforced composite shell
- Accentuated longitudinal crest
- Two Easi On-Off Bases for torches (EOB)
- Premium reflective trim
- Full cranium polyurethane impact liner
- Internal “bubble” face shield
- OTEP™ (One Touch Eye Protector)
- 3-point chin strap with leather cheek padding
- Pacific quick release buckle
- Rear storage hanger
- Flame resistant neck protector
- Pacific ratchet adjustable headband
- 6-point ribbon cradle harness

| PRODUCT SPECIFICATIONS |   |  |
|------------------------|---|--|
| Product Code           | HF10MK3   |  |
| Application            | Structural Firefighting   |  |
| Certification          | AS/NZS 4067:2012<br>*EN443:2008<br>*NFPA 1971:2013<br>*NFPA1951: 2013 | EYEWEAR CERTIFICATION<br>AS/NZS 1337.1:2010<br>ANSI Z87:2015<br>*EN166:2001<br>*EN14458:2004 |

\* Also available certified to:



## PACIFIC F3D MKII

The Pacific F3D MkII is a cornerstone model of the Pacific range. It is used around the world and has a proven track record of being an extremely safe, robust and long lasting helmet. The traditional design includes a wide, rear brim offering additional shielding for the back of the head and neck.

- DuPont™ Kevlar® & fibreglass reinforced composite shell
- Easi On-Off Base for torch (EOB)
- Premium reflective trim
- Unique full cranium polyurethane liner
- Clear face shield
- 2-point chin strap
- Pacific quick release buckle

- Rear storage hanger
- Flame resistant neck protector
- Pacific ratchet adjustable headband
- 6-point ribbon cradle harness with mesh

| PRODUCT SPECIFICATIONS |                                 |
|------------------------|---------------------------------|
| Product Code           | HF3DMK2                         |
| Application            | Structural Firefighting         |
| Certification          | AS/NZS 4067:2012<br>*EN443:2008 |

*\* Also available certified to:*



## PACIFIC BR9 STANDARD

The BR9 from Pacific Helmets is a popular lightweight bushfire helmet. The standard shape incorporates a narrow side brim and multiple crown ridges allow for extra strength and air flow.

- DuPont™ Kevlar® & fibreglass reinforced composite shell
- Multi-ridge impact protection
- Standard brim design
- Easi On-Off Base for torch (EOB)
- Earmuff brackets
- Goggle mount
- Premium reflective trim
- Clear, clip on face shield
- 3-point chin strap

- Pacific quick release buckle
- Flame resistant neck protector
- Pacific ratchet adjustable headband
- 6-point ribbon cradle harness with mesh

^ Reflective trim not shown in image - must be fitted for Type 3 certification

| PRODUCT SPECIFICATIONS |  |
|------------------------|--|
| Product Code           | HBR9SCVMF  |
| Application            | Wildland Firefighting<br>Technical Rescue<br>Industry Work |
| Certification          | AS/NZS1801:1997<br>^Type 3                                 |



## PACIFIC BR9 CAP STYLE

The BR9 is a versatile head protection platform for Emergency Services that can support a full range of accessories. The Cap Style Shell design has a short front brim, no rear brim and a scallop cut on both sides for better earmuff mounting and stowage.

- DuPont™ Kevlar® & fibreglass reinforced composite shell
- Multi-ridge impact protection
- Cap style design
- Easi On-Off Base for torch (EOB)
- Earmuff brackets
- Premium reflective trim
- Clear, clip on face shield
- 3-point chin strap
- Pacific quick release buckle
- Flame resistant neck protector
- Pacific ratchet adjustable headband
- 6-point ribbon cradle harness with mesh

## PACIFIC BR9 WIDE BRIM

All the features of the popular standard BR9 with the addition of a wider brim over the sides of the helmet. The wider brim offers more protection to the side of the head while also directing water and precipitation away from the neck.

- DuPont™ Kevlar® & fibreglass reinforced composite shell
- Multi-ridge impact protection
- Wider brim over the sides of the helmet
- Easi On-Off Base for torch (EOB)
- Earmuff brackets
- Premium reflective trim
- Clear, clip on face shield
- 3-point chin strap
- Pacific quick release buckle
- Flame resistant neck protector
- Pacific ratchet adjustable headband
- 6-point ribbon cradle harness with mesh

^ Reflective trim not shown in image - must be fitted for Type 3 certification

### PRODUCT SPECIFICATIONS

|               |  |
|---------------|--|
| Product Code  | HBR9SCVMF  |
| Application   | Wildland Firefighting<br>Technical Rescue<br>Industry Work |
| Certification | AS/NZS1801:1997<br>Type 3                                  |

### PRODUCT SPECIFICATIONS

|               |  |
|---------------|--|
| Product Code  | HBR9WBCVMF   |
| Application   | Wildland Firefighting<br>Technical Rescue<br>Industry Work |
| Certification | AS/NZS1801:1997<br>^Type 3                                 |



## PACIFIC BR5 MKII

Pacific's heritage wildland firefighting helmet. The classic design focuses on delivering safety, quality, and comfort to the user.

- DuPont™ Kevlar® & fibreglass reinforced composite shell
- Single ridge design
- Wide brim style
- Easi On-Off Base for torch (EOB)
- Premium reflective trim
- Clear, clip on face shield
- 3-point chin strap
- Pacific quick release buckle
- Flame resistant neck protector

- Pacific ratchet adjustable headband
- 6-point ribbon cradle harness

^ Reflective trim not shown in image - must be fitted for Type 3 certification

| PRODUCT SPECIFICATIONS |   |
|------------------------|---|
| Product Code           | HBR5 CVFS   |
| Application            | Wildland Firefighting                               |
| Certification          | AS/NZS1801:1997<br>^Type 3<br>ANSI 299.1<br>^Type 3 |

\* EN397

\* Also available certified to:



## HELMET FEATURES

- 1** Fibretuff composite shell
- 2** Pacific ratchet adjustable headband with pivot nape strap
- 3** Pacific low profile buckle
- 4** 4-point chin strap
- 5** Engineered water release holes
- 6** Form moulded PE padding
- 7** DSVS™ (Dynamic Sealed Ventilation System)
- 8** Premium reflective trim
- 9** Easi On-Off Base for torch
- 10** Rubber straps to secure accessories



**SPECIALISED  
WATER RESCUE**



**COMMS  
COMPATIBLE**

### PRODUCT SPECIFICATIONS

|               |   |
|---------------|---|
| Product Code  | HR6V  |
| Application   | Technical Rescue                                  |
| Certification | EN 1385:1997<br>SELECT CLAUSES OF:<br>EN 443:2008 |



## PACIFIC R6V MKII WATER RESCUE HELMET



NEW

The R6V MkII Seeker from Pacific Helmets has been designed specifically for water rescue and water recreation applications.

Made with a Fibretuff composite shell the Seeker provides integral strength and excellent penetration protection. This lightweight shell is chemical and UV resistant with inherent heat and flame resistance.

The specialised ventilation system can be opened and closed depending on the situation - when closed the vent is sealed, water tight.





## PACIFIC R6 CHALLENGER

Contemporary design meets function - the Challenger rescue helmet is the definition of 'multi-purpose'. It is fully certified to the widest range of rescue helmet standards available and offers optimum protection for both wildland firefighting and technical rescue applications.

- DuPont™ Kevlar® & fibreglass reinforced composite shell
- Easi On-Off Base for torch
- Earmuff brackets
- Goggle mount
- Premium reflective trim
- Unique polyurethane cap
- Shock absorbing ultrastop padding
- Clear, clip on face shield
- 4-point chin strap
- Pacific low profile buckle
- Flame resistant neck protector
- Pacific ratchet adjustable headband
- 6-point ribbon cradle harness with air mesh

^ Neck protector and reflective trim not shown in image - must be fitted for Type 3 certification

| PRODUCT SPECIFICATIONS |  |   |
|------------------------|--|---|
| Product Code           | HR6CFS   |   |
| Application            | Wildland Firefighting<br>Technical Rescue      |   |
| Certification          | AS/NZS 1801:1997<br>^Type 3<br>*NFPA 1951:2013 | *EN397:2012<br>*EN16471:2014<br>*EN16473:2014 |

\* Also available certified to:



## PACIFIC R6 DOMINATOR (R6V)

The 'Dominator' is made for complex rescue situations. It sports a modern and compact design that focuses on user comfort and protection. Featuring the Pacific Dynamic Sealed Ventilation System™ and internal eye protection the R6V is up to just about any challenge.

- Fibretuff composite shell
- Easi-on-off (EOB) torch base
- Earmuff brackets
- Goggle mount
- Premium reflective trim
- Unique polyurethane cap
- Shock absorbing ultrastop padding
- DSVS™ (Dynamic Sealed Ventilation System)
- Pull-down internal eye protection
- 4-point chin strap
- Pacific low profile buckle
- Flame resistant neck protector
- Pacific ratchet adjustable headband
- 6-point ribbon cradle harness with air mesh
- 4-point bungee strap

| PRODUCT SPECIFICATIONS |  |  |
|------------------------|--|--|
| Product Code           | HR6DOM   |  |
| Application            | Technical Rescue                               |  |
| Certification          | AS/NZS 1801:1997<br>Type 1 & 2<br>EN12492:2012 | *EN12492:2012<br>*EN397:2012<br>*EN16471:2014<br>*EN16473:2014 |

\* Also available certified to:



Best Design Awards  
Winner 2016

## PACIFIC R6 PATROLLER (R6L)

A tactical rescue helmet with a unique rail system to accommodate several different accessories. A great head protection solution for USAR, Paramedics, technical rescue workers and wildland firefighters.

- DuPont™ Kevlar® & fibreglass reinforced composite shell
- VAS accessory shroud
- Accessory rails
- Pacific edge beading
- Premium reflective trim
- Unique polyurethane cap
- Shock absorbing ultrastop padding
- 4-point chin strap
- Pacific low profile buckle
- Flame resistant neck protector
- Pacific ratchet adjustable headband
- 6-point ribbon cradle harness with air mesh

^ Neck protector and reflective trim not shown in image - must be fitted for Type 3 certification



## PACIFIC R5S

The Pacific R5S is the helmet of choice for many rescue crews around the globe. This popular helmet strikes the perfect balance between wearer comfort and protection while incorporating all the features you expect from a Pacific Helmet.

- DuPont™ Kevlar® & fibreglass reinforced composite shell
- Easi-on-off (EOB) torch base
- 3-Point chin strap
- Pacific quick release buckle
- Flame resistant neck protector
- Pacific ratchet adjustable headband
- 6-point ribbon cradle harness
- Communications bracket

| PRODUCT SPECIFICATIONS |  |
|------------------------|--|
| Product Code           | HR6R PRVS  |
| Application            | Wildland Firefighting<br>Technical Rescue  |
| Certification          | AS/NZS 1801:1997<br>^Type 3<br>*NFPA 1951:2013<br>*EN16471:2014<br>*EN16473:2014 |

\* Also available certified to:

| PRODUCT SPECIFICATIONS |  |
|------------------------|--|
| Product Code           | HR5S   |
| Application            | Technical Rescue   |
| Certification          | AS/NZS 1801:1997<br>Type 1 & 2<br>*ANSI Z89.1:2014<br>*EN 397:2012 |

\* Also available certified to:

L5PLUS.S



A107118



L.1



## LED TORCH ADARO L5 PLUS

L5 Plus torch is multifunctional flashlight that can be used both as a hand torch or helmet mounted.

- Two power settings: high & Auto
- White LED with a 4 hour (high) burn
- Light output 135lm
- Photoluminescent bezel increases visibility
- Durable and impact resistant thermoplastic resin torch body
- Intelligent energy management
- 4 x AAA Alkaline batteries (L.5PLUS.S) or a 3.7v Li-ion battery (L.5PLUS.R)
- Can be mounted on any Pacific helmet using the A107118 Helmet Clip (sold separately)
- Charger for L.5PLUS.R sold separately (CL5.1)
- Made in Spain

## LED TORCH ADARO L1 PENLIGHT

The L1 is a multi-purpose hand and helmet LED flashlight that includes a universal helmet adapter. The built-in neodymium magnet enables the L1 to attach the torch to any metallic surfaces.

- White LED with an 18 hour burn
- Light output 100lm
- Shock resistant rubber casing
- Integrated neodymium magnet
- Antistatic protection
- Chemical resistant
- Powered by 2 x AAA Alkaline Batteries
- Can be mounted on any helmet or hard hat using clip mount (included)
- Made in Spain

| PRODUCT SPECIFICATIONS |   |
|------------------------|---|
| Product Code           | L.5PLUS   |
| Options                | L.5PLUS.S - 4 x AA Batteries<br>L.5PLUS.R - Rechargeable  |
| Certification          | ATEX Zone 0 Intrinsically Safe<br>Ingress protection IP67 |

| PRODUCT SPECIFICATIONS |   |
|------------------------|---|
| Product Code           | L.1   |
| Certification          | ATEX Zone 0 Intrinsically Safe<br>Ingress protection IP67 |



UKT10034+



UKT145066



UKT514609-7A



B2066114

## ELED TORCH 3AA CPO UNDERWATER KINETICS

Smaller. Lighter. Brighter. The 3AA eLED from Underwater Kinetics is a flashlight with superior LED technology that is lightweight and affordable.

- eLED with a 8 hour burn
- Light output 110lm
- Beam distance 92m
- Depth rating 3.05m
- Compound Path Optics (CPO) technology improves visibility and efficiency - especially in poor visibility conditions
- Push button tail switch, switches light between ON/OFF with continuous or momentary action
- Powered by 3 x AA / LR6 Alkaline Batteries (included)
- Can be mounted on any Pacific helmet using the B2066114 Helmet Clip (sold separately)
- Made in the USA

## ELED TORCH 4AA ZOOM UNDERWATER KINETICS

Firefighters and industrial workers all over the world trust UK's 4AA eLED Zoom flashlight to get the job done.

- eLED with a 5 hour burn
- Light output 77lm
- Depth rating 3.05m
- Projection Optics let you zoom with a twist of the bezel from a wide beam to an intense spot
- Push button front ON/OFF switch
- Powered by 4 x AA / LR6 Alkaline Batteries (included)
- Tough, electrically non-conductive, non-corroding ABS and polycarbonate plastic construction
- Can be mounted on any Pacific helmet using the B2066114 Helmet Clip (sold separately)
- Made in the USA

## ELED TORCH 4AA RED HERCULITE UNDERWATER KINETICS

The Red Herculite is a flashlight with superior LED technology that is lightweight and affordable.

- eLED with a 8 hour burn
- Light output 180lm
- Depth rating 3.05m
- Push button tail switch
- All-weather use
- Chemical resistant
- Water resistant to 1m
- Powered by 4 x AA / LR6 Alkaline Batteries (included)
- Can be mounted on any Pacific helmet using the B2066114 Helmet Clip (sold separately)
- Made in the USA

### PRODUCT SPECIFICATIONS

|               |   |
|---------------|---|
| Product Code  | UKT10034+   |
| Certification | Class 1, Division 1 Intrinsically Safe<br>Ingress protection IP67 |

### PRODUCT SPECIFICATIONS

|               |   |
|---------------|---|
| Product Code  | UKT145066   |
| Certification | Class 1, Division 1 Intrinsically Safe<br>Ingress protection IP67 |

### PRODUCT SPECIFICATIONS

|               |                         |
|---------------|-------------------------|
| Product Code  | UKT514609-7A+           |
| Certification | Ingress protection IP67 |

UKT17018



## VIZION® ELED HEADLAMP 3AA UNDERWATER KINETICS

For superior hands-free illumination in every situation, count on the Vizion. The Vizion® Headlamp from Underwater Kinetics is waterproof for all-weather use and it's built tough to withstand the most challenging environments.

Vizion® incorporates Compound Path Optics (CPO) technology, which improves visibility and efficiency. It allows you to see further in poor visibility conditions like fog, smoke, rain, snow, and murky water.

- High and Low power settings
- eLED with 13 hrs (high) / 17 hrs (low) burn
- Light emission: 65 lm (high) / 35 lm (low)
- Beam distance: 60m (high) / 38m (low)
- Depth rating 10m
- All-weather use
- Large push button control switch works with heavy gloves
- Powered by 3 x AAA / Alkaline (included) or Lithium
- 3 Selectable beam patterns - Spot, Diffuse and Red Diffuse
- High Impact ABS, LEXAN®, polyurethane rubber, and stainless steel construction for durability

| PRODUCT SPECIFICATIONS |  |
|------------------------|--|
| Product Code           | UKT17018   |
| Application            | Wildland Firefighting<br>Technical Rescue<br>Industry Work |
| Certification          | Ingress protection IP67                                    |

NEW

PF950++



PFTS950

## WILDLAND PROTECTIVE GOGGLES PAC FIRE

Pac Fire's budget helmet mounted goggles are heat resistant, durable and flexible. The foam bound, non-vented goggle body moulds to the face increasing comfort while preventing smoke and other airborne contaminants entering to impede vision.

- Economical primary eye protection
- Wide vision and low profile goggle
- Accommodates multiple facial sizes
- Excellent clarity with no optical distortion
- Non-vented to prevent egress of smoke or airborne particles that may impede vision
- Quick release strap clips for easy removal - even when wearing gloves
- 100% UVA / UVB protection for outdoor use
- FR frame, lens and straps
- Soft wrap-around TPV body for higher heat resistance
- Foam bound to aid in sealing
- Clear, polycarbonate, anti-static lens
- Goggle mount kit included

| PRODUCT SPECIFICATIONS |   |
|------------------------|---|
| Product Code           | PF950++: Pac Fire 2 Strap Goggles<br>PFTS950: Replacement Straps for Pac Fire Goggles |
| Application            | Wildland Firefighting<br>Technical Rescue<br>Industry Work                            |
| Certification          | AS/NZS 1337.1:2010  |

GESS GCD+



## FIRESTRIKE GOGGLE ESS

ESS FireStrike Goggles are the ideal solution for wildland firefighters and rescue workers who understand the need to have clear, dependable and durable primary eye protection.

- Available in single or two strap configurations
- Low profile body
- Polycarbonate, anti-scratch, fog resistant lens
- Distortion free for impeccable optical clarity
- 100% UVA / UVB protection
- FR frame, lens and straps
- Clear, anti-scratch, polycarbonate lens
- Replacement straps and lenses available
- Compatible with corrective lens insert (GESS URX) and protective goggle cover (GECOVER)
- Goggle mount kit included in double strap model



## CLASS 5 EARMUFFS PAC FIRE

Pac Fire's class 5 earmuffs have been designed to fit a range of Pacific Helmets using earmuff clips. When tested on the BR9 and R5 models of helmet the Pac Fire earmuffs reduced noise up to 110dB.

- Can provide noise reduction of up to 110dB
- Fast and easy to fit - no tools required
- Earmuffs can be rotated out of the way to stow
- Comfortable, easy to clean ear cushions
- Height adjustment for correct fit
- Made in Australia

### PRODUCT SPECIFICATIONS

|               |   |
|---------------|---|
| Product Code  | GESS  |
| Options       | <p>GESS GCS+: Firestrike Goggles - 1 strap / clear lens<br/>                 GESS GAS+: Firestrike Goggles - 1 strap / amber lens<br/>                 GESS GSS+: Firestrike Goggles - 1 strap / smoke lens<br/>                 GESS GCD+: Firestrike Goggles - 2 strap / clear lens<br/>                 GESS GAD+: Firestrike Goggles - 2 strap / amber lens<br/>                 GESS GSD+: Firestrike Goggles - 2 strap / smoke lens</p> <p>GESS SS: Replacement strap (1 strap)<br/>                 GESS DS: Replacement straps (2 strap)<br/>                 GESS LC: Replacement lens - Clear<br/>                 GESS LA: Replacement lens - Amber<br/>                 GESS LS: Replacement lens - Smoke</p> |
| Application   | <p>Wildland Firefighting<br/>                 Technical Rescue<br/>                 Industry Work</p>   |
| Certification | AS/NZS 1337.1:2010  |

### PRODUCT SPECIFICATIONS

|               |   |
|---------------|---|
| Product Code  | MZPF920CA   |
| Application   | <p>Wildland Firefighting<br/>                 Technical Rescue<br/>                 Industry Work</p> |
| Certification | <p>Class 5<br/>                 AS/NZS 1270</p>   |



## TITAN REMOTE PUSH TO TALK

This simple and robust Push To Talk streamlines communications. The extra large push to talk button located on the front of the unit is easy to operate even with gloved hands. The nexus connector allows the user to add a multitude of audio accessories including the Titan helmet mounted boom mic or throat mic.

- Extra large front facing PTT button
- Clothing clip with 360° rotation (45° increment stops)
- Nexus connection
- Configurable to most radio types

## TITAN REMOTE HAND SPEAKER MICROPHONE

A comprehensive and versatile communications solution using a nexus connector to add a multitude of audio accessories - perfect for users who require helmet audio systems.

- Large front facing push to talk button
- Additional, side push to talk button
- Clothing clip with 360° rotation (45° increment stops)
- Volume control
- 3.5mm audio jack for earphone accessories
- Nexus connection

### PRODUCT SPECIFICATIONS

|               |  |
|---------------|--|
| Product Code  | PTT20  |
| Application   | Structural Firefighting<br>Wildland Firefighting<br>Technical Rescue |
| Certification | Ingress protection IP67  |

### PRODUCT SPECIFICATIONS

|               |  |
|---------------|--|
| Product Code  | MM20   |
| Application   | Structural Firefighting<br>Wildland Firefighting<br>Technical Rescue |
| Certification | Ingress protection IP67  |



## TITAN FIRECOM HELMET MOUNTED BOOM MIC

This comprehensive communication device can be directly connected to a speaker microphone or a PTT using the nexus connection.

It comes in a stereo, single and listen only version for your helmet and critical communication needs.

- Direct connection to a speaker microphone or PTT using a nexus connection
- Large 40mm speaker
- Noise reduction microphone
- Replaceable windshield



| PRODUCT SPECIFICATIONS |  |                                    |
|------------------------|--|------------------------------------|
| Product Code           | HUC5   |                                    |
| Application            | Structural Firefighting<br>Wildland Firefighting<br>Technical Rescue |                                    |
| Certification          | Microphone<br>Ingress protection IP67                                | Speaker<br>Ingress protection IP54 |



**NEW**



## SC-14 ALL-PURPOSE CLEANER

SC-14 is an all-purpose cleaner and degreasing agent that not only removes dirt, grease and grime - but also cleans away contaminants and carcinogens.

SC-14 has been formulated to remove dirt and contaminants without compromising the integrity of the item your cleaning.

- For routine cleaning of helmets, equipment and surfaces
- Easy to use, all purpose cleaning and degreasing solution
- Effective on grease, grime soil and hydrocarbons
- Cleans away potentially harmful contaminants and carcinogens
- Compact shape for easy transport or storage
- Environmentally friendly, biodegradable and non-corrosive formula
- Free from potentially damaging sodium hydroxide and sodium metasilicate
- Available in a convenient 946ML spray bottle
- Tested and supported by the industry leading helmet manufacturer - Pacific Helmets



**CLEANING & MAINTENANCE**



**PARTICULATE REMOVAL**



**SAFE CLEANING OF HELMETS & EQUIPMENT**

### PRODUCT SPECIFICATIONS

|              |  |
|--------------|--|
| Product Code | SC-14F-032-6   |
| Options      | SC-14F-032-6 - All Purpose Cleaner - 946ML Spray Bottle (Box of 6 bottles) |



# PROTECTIVE CLOTHING



## BRISTOL UNIFORMS

With over 50 years' experience in the specification, design and manufacture of firefighter Personal Protective Equipment (PPE) it is little wonder that Bristol's garments now protect firefighters in over 110 countries across the globe.

Bristol specialises in creating custom PPE solutions to meet the requirements of an individual service. Garments can be uniquely customised with a choice of outershell fabric, moisture barrier and thermal liner.

Over 300 different product feature variations can be added to one of Bristol's standard designs to construct the most functional and comfortable garments.

## ACHIEVEMENTS & MILESTONES

- 1961** Wathen Gardiner & Co, formed an independent business, 'Bristol Uniforms' to focus on developing protective clothing for firefighters handling emergencies at RAF airfields in the UK.
- 1967** The arrival of specialised fabrics and fibres like DuPont™ Nomex® enabled the development and introduction of new specialised fire clothing to replace the woollen fire tunic
- 1970** The T63 was introduced as the forerunner of the modern fire suit and incorporated a serge material with a fire retardant finish
- 1995** The first European standard for firefighter clothing, EN469:1995 was introduced after three years in development



**2000** Bristol begins their managed services system which includes cleaning, decontamination, inspection, maintenance, garment tracking, collection and delivery

**2003** After years of research and collaboration with major agencies in the UK, Ergotech Action ensembles were released spearheading a new generation of lightweight PPE

**2011** Bristol introduces the revolutionary XFlex, a structural range with a unique thermal lining and sports-like styling

**2012** RescueFlex was launched. The move towards balancing protection with comfort spurred a new generation of USAR PPE

**2014** LayerFlex is launched. The LayerFlex design ensures firefighters are wearing garments suitable for the role being undertaken, rather than solely structural fire clothing

**2015** A revolution in moisture barriers was released - Gore® Parallon™. Soon after it's debut, Parallon™ was offered as an option when customising XFlex ensembles

**2017** Based on the revolutionary XFlex design, EcoFlex Wildland was launched. EcoFlex was developed to address the unique challenges and environmental factors faced by wildland firefighters in Australia

**2017** Titan PBI® Gloves were launched in Australia - the first textile structural firefighting gloves certified to AS/NZS 2161.6:2014

**2018** In line with a growing focus on firefighter health, Bristol releases the NanoFlex hood range that incorporates traditional flash hood features as well as protection from potentially harmful particulates

## STRUCTURAL OUTERSHELL FABRICS

Outershell fabrics protect the wearer from flame and radiant heat. The following fabrics are a small selection of Pac Fire favourites.



### NOMEX® 360™

**NEW**

Nomex® 360™ delivers a balance of firefighter comfort, mobility and protection while being extremely durable. Filament Twill Technology, Nomex® 360™ spun yarns and DuPont™ Kevlar® filament, ensure fabric strength and flexibility after direct flame exposure.

**COMPOSITION** 73% Kevlar, 14% Nomex, 12% PBO, 1% Antistatic

**WEIGHT** 170gsm



### PBI® MAX

**NEW**

PBI® Max is a lightweight, high performance fabric that will not shrink or break open when exposed to extreme heat and flame. PBI® Max is one of the strongest outershell fabrics offered which retains high levels of comfort and flexibility for the wearer. PBI® Max has a DuPont™ Teflon F-PPE water repellent finish.

**COMPOSITION** 70% PBI® (Dominant PBI/Kevlar blend spun yarn) 30% Kevlar® filament yarn

**WEIGHT** 205gsm



### TITAN® PBI 1260

TITAN 1260 is a 220gsm, highly breathable, outer shell or single layer fabric featuring Nomex®, Kevlar® and PBI®. This fabric features 'Active Air Entrapment' provided by the double cloth construction. The inclusion of PBI® fibre increases thermal integrity, ensuring that the fabric remains flexible and intact.

**COMPOSITION** 74% PBI® (proprietary blend), 23% Nomex®, 3% Kevlar®

**WEIGHT** 220gsm



### TITAN® 1220

TITAN 1220 is a breathable fabric designed for the outershell of structural firefighting garments, reducing the risk of heat stress by keeping you cool and comfortable. It combines the flame resistant properties of Nomex® and Kevlar® to provide thermal protection and durability for the most demanding situations.

**COMPOSITION** 89% Nomex®, 9% Kevlar®, 2% Antistatic

**WEIGHT** 220gsm

## STRUCTURAL MOISTURE BARRIERS

The moisture barrier protects against external water penetrating the garment and contacting the skin while effectively wicking away sweat keeping the wearer cool, protecting against steam related injuries and mitigating heat stress.



### GORE® PARALLON™

**NEW**

The GORE® PARALLON™ quick dry system has been developed to mitigate the risks associated with moisture and heat stress by introducing a unique solution that incorporates a highly breathable Gore thermal barrier combined with a CROSSTECH® Moisture barrier.

This is a unique use of two membranes encapsulating a layer of thermal protection that maintains breathability while wicking moisture away from the skin and out through the ensemble, simultaneously preventing liquid penetration from the outside.

**COMPOSITION** Face/fabric 100% Aramid & content 70% Aramid, 30% FR Viscom membrane based on EPTFE

**WEIGHT** 370gsm



## GORE® CROSSTECH® AIRLOCK

A combination of thermal protection and moisture barrier which eliminates the need for extra-thick insulation. The innovative construction uses thermally stable and chemically resistant foam silicone spacers to create an insulating air cushion, giving a very high level of thermal protection without a bulky and restrictive insulation layer.

**COMPOSITION** 2-layer laminate of PTFE film on m-aramid/ p-aramid non-woven with chemical-resistant closed cell foam silicone spacers

**WEIGHT** 225gsm



## NOMEX® "SLICK" LINER

A red, plain weave, 120gsm, 100% Nomex® filament liner. This assists with thermal protection, total heat loss, comfort and also supports donning and doffing of the garments.

**COMPOSITION** 100% Nomex®

**WEIGHT** 120gsm

## WILDLAND TECHNICAL FABRICS

The latest technical fabrics available for single layer wildland garments are particularly light, breathable and inherently flame retardant while remaining durable and resistant to abrasion.

## STRUCTURAL THERMAL LINERS

A structural garments thermal lining provides protection from heat and proximity to flame.



## QUILTED Q13

The Q13 (N20PO+F31) thermal liner consists of DuPont® Nomex® spunlace with Nomex® Delta C quilted together by Abbey Quilters in 10cm boxes using Nomex® thread.

This liner offers lightweight comfortable, inherent thermal protection against heat and flame.

Nomex® Delta C encompasses antistatic properties, reduces moisture absorption, dries quickly and is very forgiving on the skin.

### N20PO

**COMPOSITION** 93% Nomex®  
5% Kevlar®  
2% Antistatic

**WEIGHT** 110gm2  
+/- 5%

### F31

**COMPOSITION** 67% Nomex®  
33% Kevlar®

**WEIGHT** 50gm2  
+/- 13%



## ECO-DRY SHIELD

Eco-Dry Shield from Hainsworth is a technical fabric for wildland garments. The unique combination of fibres results in outstanding protection against heat and flame while remaining comfortable to wear during high activity levels.

**COMPOSITION** 31% Wool / Lenzing FR and 69% DuPont™ Nomex®

**WEIGHT** 240gsm



## KARVIN

Karvin is one of the latest technical fabrics by Estambriil. This lightweight fabric has been specifically designed for wildland firefighting applications and provides optimum protection against radiant and convective heat as well as outstanding abrasion, colour fastness and strength.

**COMPOSITION** 65% Lenzing FR, 30%, Nomex® and 5% Kevlar®

**WEIGHT** 245gsm



## LAYER FLEX

### PRODUCT SPECIFICATIONS

|               |   |
|---------------|---|
| Application   | Structural Firefighting                           |
| Sizes         | 28 Male   28 Female<br>Custom sizes are available |
| Certification | EN469: 2005                                       |

LayerFlex was designed to introduce a new layered approach, using three garments. When used in different combinations, layers provide the required levels of protection for Structural firefighting, Wildland firefighting and technical rescue.

These garments have been designed to ensure that a firefighter is wearing garments which are suitable for the role being undertaken, rather than wearing structural fire clothing for all roles (including Technical Rescue and Wildland firefighting).

The ensemble consists of three garments:  
A RescueFlex jacket, XFlex outer jacket and XFlex trousers





## JACKET FEATURES

- Tapered body shape
- Hem curved up at front and down at back – comfort and protection
- Shoulder shape and under arm gussets allow for full rotational arm movement
- Shoulder yoke shaped for comfort, especially with breathing apparatus
- Deep return on cuff hem ensures gloves fit well inside sleeve
- Fully breathable through all layers

## TROUSER FEATURES

- Natural waistline at front with high curved back
- Centrally placed zip fly allows tapering of top of trouser, giving superior fit and making it easier to put on
- H Braces with unique webbing slide adjuster
- Large twin action pleat cargo pockets with drain holes
- Fully articulated, 3D knee shaping greater movement
- American Specification 3M perforated triple trim with Trim Saver
- Telescopic trouser cuff to minimise convective heat flow up the leg

## XFLEX



XFlex is Bristol Uniforms premium lightweight structural firefighting ensemble.

Ergonomically designed, the XFlex focuses on delivering maximum comfort for a vast range of male and female body types.

XFlex has distinctive sporting style which allows the ensemble to move with the firefighter attracting less resistance resulting in greater flexibility and less energy expenditure.



### PRODUCT SPECIFICATIONS

|               |   |
|---------------|---|
| Application   | Structural Firefighting                           |
| Sizes         | 28 Male   28 Female<br>Custom sizes are available |
| Certification | AS/NZS 4967:2009<br>AS/NZS 4602.2:2013            |

### JACKET FEATURES

- Tapered body shape
- Hem curved up at front and down at back – comfort and protection
- Shoulder shape and under arm gussets allow for full rotational arm movement
- Shoulder yoke shaped for comfort, especially while wearing breathing apparatus
- Double zip flap extends to neck with internal zip guard to protect throat
- Stiff standalone collar providing full protection for the neck and throat with soft knitted inner collar.
- Large landscape side pockets with drain holes
- Vertical pocket under zip flap
- Large internal pocket with care and instruction label
- Ergonomic 3D articulated elbow for greater flex
- Hem of sleeve curved over back of hand for additional protection.
- Deep return ensures gloves interface well inside the sleeve.
- American Specification 3M perforated triple trim with Trim Saver
- Inspection port with zip closure
- Pen pocket
- Hanger loop for easy storage



## TROUSER FEATURES

- Natural waistline at front with high curved back
- Centrally placed double zip including hook and loop with press stud fastener.
- H Braces with unique webbing slide adjuster
- Large twin action pleat cargo pockets with drain holes
- Fully articulated, 3D knee shaping greater movement
- American Specification 3M perforated triple trim with Trim Saver
- Extra large inspection port with zip closure
- Telescopic trouser cuff to minimise convective heat flow up the leg

- Leg opening designed for ease of donning
- Hanger loop for easy storage

## FABRIC & MOISTURE BARRIER OPTIONS

The XFlex design is completely customisable to meet a specific person or agencies requirements.

Specify the best outershell fabric, moisture barrier and thermal lining for your particular application.

Lead times will apply for these garments due to the highly customisable nature of XFlex.

## ERGOTECH ACTION ELITE



Developed after careful research and extensive user trials into the ergonomics of firefighter activities, the ErgoTech Action Elite has become the standard by which lightweight firefighter PPE is measured for comfort and performance.

ErgoTech has been developed in close collaboration with the world's leading fibre and fabric manufacturers. It has become a globally recognised design by fire agencies looking to equip their firefighters with PPE, which combines outstanding protection with low physiological impact.



### PRODUCT SPECIFICATIONS

|               |   |
|---------------|---|
| Application   | Structural Firefighting                           |
| Sizes         | 28 Male   28 Female<br>Custom sizes are available |
| Certification | AS/NZS 4967:2009<br>AS/NZS 4602.2:2013            |

### JACKET FEATURES

- Collar and throat tab shape provide optimal compatibility with helmet and fire hood
- Shoulder shape and increased upper sleeve allow full rotational mobility in shoulder and arm
- Shaped panel over the shoulder eliminates the shoulder seam and makes a smoother line with greater comfort when wearing breathing apparatus
- Shoulder yoke shaped for comfort, especially with breathing apparatus
- Increased underarm gusset allows more manoeuvrability when reaching overhead
- Two action pleats added at the back shoulder
- Hanging loop for storage
- Tecashield on elbows
- Cuffs with thumb holes
- American Specification 3M perforated triple trim with Trim Saver
- Inspection port with zip closure
- Torch holder
- Radio pockets
- Pen pocket
- Logo print available on the back
- 2 hook and loop badge spaces



## TROUSER FEATURES

- Articulated knees with convex seams for greater flexibility when bending/climbing
- Arashield on knees for greater protection
- Shaped seaming on back of knee to reduce fullness when crawling
- Top of trouser contoured to the body with raised back and elasticated adjustment across lumbar region
- Removable H pattern braces – designed not to twist
- 2 large half bellow pockets
- American Specification 3M perforated triple trim with Trim Saver
- Inspection port with zip closure

- Hook & loop leg openings
- Hanger loop for easy storage

## FABRIC & MOISTURE BARRIER OPTIONS

Pac Fire's Ergotech Action Elite ensemble comes standard with a TITAN PBI® 1260 outershell and Gore® CROSSTECH® AIRLOCK® moisture barrier.



TITAN PBI® 1260

Ergotech Action Elite can be customised with a different outershell fabric and moisture barrier on request. Lead times apply for custom garments.

## BTECH



The philosophy behind BTEch was to produce a comfortable and practical garment, without any compromise to safety.

The short style jacket is designed with ergonomic fit. The trouser measurements provide adequate overlap, so that there is no gap between coat and trousers when bending.

Popular BTEch is now a favourite with many Fire authorities in Australia as well as other countries worldwide.



### PRODUCT SPECIFICATIONS

|               |   |
|---------------|---|
| Application   | Structural Firefighting                           |
| Sizes         | 28 Male   28 Female<br>Custom sizes are available |
| Certification | AS/NZS 4967:2009<br>AS/NZS 4602.2:2013            |

### JACKET FEATURES

- 2 outer lower pockets with mitred flaps
- 1 internal pocket
- Cuffs with Neoprene anti-wicking barrier
- Moulded zip front with Velcro fastened flap
- Gore-Tex® lined Flip back throat tab
- American Specification 3M perforated triple trim with Trim Saver
- Hanger loop on under collar

### TROUSER FEATURES

- Standard waist trousers with side elastication
- Fixed braces
- Back seat with yoke
- Curved knee pads and Aramid felt internal pads
- Internal hip patch pocket
- Plain trouser hems with Neoprene anti-wicking panels
- American Specification 3M perforated triple trim with Trim Saver



## FABRIC OPTIONS

Pac Fire's BTech ensemble comes standard with a Nomex® Delta T outershell in lime or navy.

BTech can be customised with a different outershell fabric on request. Lead times apply for custom specified outershell fabrics.



NOMEX® DELTA T LIME



NOMEX® DELTA T NAVY

## MOISTURE BARRIER OPTIONS

BTech 1 consists of outershell and fabric lining whereas BTech 2 includes a moisture barrier in it's construction.

The moisture barrier provides added protection from external water penetrating the garment and contacting the skin while effectively wicking away sweat keeping the wearer cool, protecting against steam related injuries and mitigating heat stress.

Pac Fire's standard BTech 2 includes a Gore-Tex® Fireblocker® moisture barrier. BTech 2 can be customised with a different moisture barrier on request. Lead times apply for custom specified moisture barriers.

## ECOFLEX WILDLAND



EcoFlex is a lightweight wildland ensemble designed specifically for the challenges faced by Australasian firefighters.

Ergonomically designed, EcoFlex provides the ultimate in fit and comfort for the maximum number of body types. EcoFlex has distinctive sports styling suitable for the hazardous roles associated with a wildland firefighter's work.

Innovations in technical fabrics provide optimum protection against extreme radiant and convective heat whilst offering the wearer comfort during extended exposure to high temperatures.



### PRODUCT SPECIFICATIONS

|               |   |
|---------------|---|
| Application   | Wildland Firefighting<br>Rescue                   |
| Sizes         | 28 Male   28 Female<br>Custom sizes are available |
| Certification | AS/NZS 4824:2006<br>AS/NZS 4602.2:2013            |

### JACKET FEATURES

- Collar and stowable throat tab shaped to provide optimal compatibility and protection with Pacific Helmet range
- Shoulder shaped with increased upper sleeve allows full rotational mobility in the shoulder and arm
- Shaped panel over the shoulder eliminates the shoulder seam and makes a smoother line with greater comfort
- Increased underarm gusset allows more manoeuvrability when reaching
- Underarm vents for increased air flow
- Moulded zip with hook and loop flap
- Hanging loop centrally located at the rear of the collar
- Microphone loop
- Adjustable torch loop
- Underarm vents for increased air flow
- 2 front breast pockets with drainage holes
- 2 lower front pockets, box belled, with drainage holes
- American Specification 3M perforated triple trim with Trim Saver
- Rank slide front centre of jacket
- Custom printed logo on centre lower back





## TROUSER FEATURES

- 2 radio pockets positioned at the rear hip
- Cargo pockets on trousers
- Moulded zip with flap
- Belt loops
- American Specification 3M perforated triple trim with Trim Saver

## FABRIC OPTIONS

Customise your EcoFlex ensemble with the latest in technical fabrics that strike the perfect balance between protection, comfort and the mitigation of heat stress.

Lead times apply for custom specified fabric.



ECO-DRY SHIELD

KARVIN

TECHS260

## RESCUEFLEX



Technical rescue situations present a unique set of challenges.

RescueFlex has been designed to be used in confined spaces, while remaining equally adaptable for other technical rescue situations such as road traffic accidents.

Bristol's ResceFlex incorporates two layers - a flame retardant outer layer and a waterproof membrane which includes a pathogen barrier. The jacket and trousers can be zipped together to form one piece when required.



### PRODUCT SPECIFICATIONS

|               |  |
|---------------|--|
| Application   | Technical Rescue   |
| Sizes         | Chest: Small - 4X Large<br>Height: Short, Regular, Tall & X Tall |
| Certification | EN ISO 11612<br>ISO 18639.3                                      |

### JACKET FEATURES

- Short style jacket
- Vented underarm panels
- Angled pockets and flaps
- Quilted padding on elbows
- Weatherproof seal over front zip
- Throat protection
- Knitted cuff with thumb loops
- Wrist straps to close hems on sleeves over gloves
- Pleated back

- Underarm gussets
- 3M reflective trim

### TROUSER FEATURES

- Elasticised waist for comfort and fit
- "H" pattern adjustable braces with a webbing slide
- Large semi-bellow cargo pockets
- Ergonomic curved knee shaping for increased protection
- Quilted foam padding using Kevlar®
- Concealed zip in leg with gusset
- 3M reflective trim



## FABRIC OPTIONS

Pac Fire's RescueFlex ensemble is made from Gore® PYRAD®. Gore® PYRAD® is a durable flame retardant fabric available in both hi-vis yellow and hi-vis orange

RescueFlex can be customised with different features on request. Lead times apply for custom specifications.



PYRAD® HI-VIS YELLOW



PYRAD® HI-VIS ORANGE





## MERINO UNDERGARMENTS

Icebreaker acts and feels like a second skin. 100% merino Icebreaker garments are soft, machine washable, they resist odour, dry quickly, and are exceptionally breathable.

Icebreaker assists in regulating temperature in all climates and conditions.

- 100% Merino Wool
- 200gsm fabric weight
- Exceptional breathability
- Natural flame redundancy
- Does not melt, shrink or stick to the skin when exposed to high temperatures
- Provides resistance to acids
- Offers greater resistance to chemical residues and aerosols than synthetic garments
- Thermo-regulates the skin reducing the occurrence of overheating or chills
- Naturally antibacterial - reduces the incidence of skin infection
- Does not generate odour after prolonged use
- Soft yet durable
- Easy care, machine washable (with wool wash)
- Quick dry

### PRODUCT SPECIFICATIONS

|             |  |
|-------------|--|
| Options     | Long sleeved top<br>Short sleeved top<br>Full length pant<br>Cropped, boxer cut pant     |
| Application | Next to skin for:<br>Structural Firefighting<br>Wildland Firefighting<br>General Purpose |
| Sizes       | MENS: Small - 2X Large<br>WOMENS: X Small - X Large                                      |

<sup>^</sup> Please specify a size when ordering  
<sup>\*</sup> lead times apply

**NEW**



**BRISTOLHOOD6**  
 THL 469 (W/m<sup>2</sup>)  
 MEDIUM FIT



**BRISTOLHOOD7**  
 THL 438 (W/m<sup>2</sup>)  
 LARGE FIT

## FLASH HOOD FEATURES

- Head design: Separate head with sewn on back and front bib
- Back of head ends at the nape of the neck for improved fit and comfort
- All head and bib seams are sewn with a flat lock stitch
- 100% Nomex<sup>®</sup> thread
- Red Nomex<sup>®</sup> thread clearly indicates the outside of the hood
- Available in Nanoflex Nomex<sup>®</sup> (BRISTOLHOOD6) and Nanoflex PBI<sup>®</sup> (BRISTOLHOOD7) for additional protection against flashover
- Label has all four edges sewn to the hood, identifying material contents, certification, lot#, date of manufacture, and care instructions
- Total Heat Loss: NanoFlex Nomex<sup>®</sup> (BRISTOLHOOD6) 469 (W/m<sup>2</sup>), NanoFlex PBI<sup>®</sup> (BRISTOLHOOD7) 438 (W/m<sup>2</sup>)
- Hood weight: NanoFlex Nomex<sup>®</sup> (BRISTOLHOOD6) medium 177g | large 185g, NanoFlex PBI<sup>®</sup> (BRISTOLHOOD7) medium 174g | large 178g



**PARTICULATE PROTECTION**



**TWO SIZES MEDIUM & LARGE**

### PRODUCT SPECIFICATIONS

|                      |  |
|----------------------|--|
| <b>Product Code</b>  | <b>BRISTOLHOOD6</b><br>Nanoflex / Nomex <sup>®</sup><br><b>BRISTOLHOOD7</b><br>Nanoflex / PBI <sup>®</sup> |
| <b>Application</b>   | <b>Structural Firefighting</b>   |
| <b>Sizes</b>         | <b>Medium &amp; Large</b>  |
| <b>Certification</b> | <b>EN13911:2017</b><br><b>*NFPA 1971:2018</b>  |

<sup>^</sup> Please specify a size when ordering

\* Certification pending

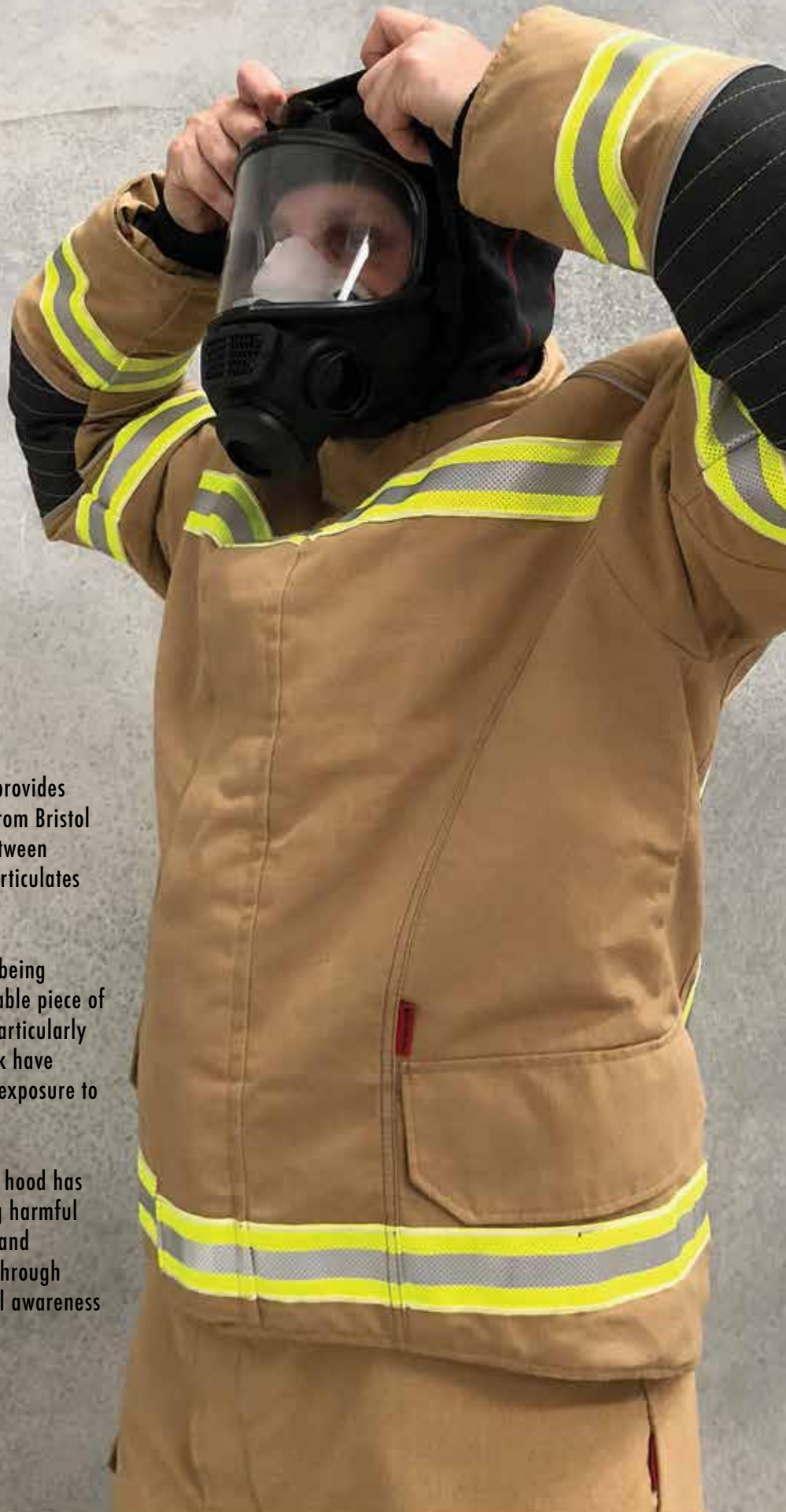
## BRISTOL NANOFLEX FLASH HOODS



The NanoFlex particulate blocking flash hood provides the comfort and protection you would expect from Bristol Uniforms while striking the perfect balance between mitigating heat stress and filtering harmful particulates found on the fire ground.

Recent studies into firefighter health and well-being suggest that the flash hood is the most penetrable piece of protective clothing worn by the firefighter, a particularly troubling finding considering the face and neck have been identified as areas of significant dermal exposure to potential carcinogens.

Bristol Uniforms revolutionary Nano Flex flash hood has been proven to be 99.8% successful at filtering harmful particulates while remaining lightweight, soft and breathable, while minimal sound is produced through head movement resulting in greater situational awareness for the firefighter.





KL200  
MEDIUM FIT



## LIFE LINERS PARTICULATE BLOCKING FLASH HOOD

The Life Liners particulate blocking flash hood is designed to deliver both comfort and protection while blocking potentially harmful carcinogens from entering the body via absorption through the skin.

- Two piece design with 15cm front with 20cm back
- Separate head with sewn on back and front bib. Back of head ends at the nape of the neck for improved fit and comfort
- Easy-Seal Face opening that goes on easy and seals tight.
- 100% Nomex® thread
- Outer Layer Fabric: 49% Kermel / 49% Lenzing FR/ 2% Spandex  
Inner Layer Fabric: Stedair Prevent
- All head and bib seams are sewn with a flat lock stitch
- 3.8cm binding sewn to hem through folder with a three thread cover stitch to create a 1.25cm finished bound hem



PARTICULATE PROTECTION



THREE SIZES  
SMALL, MEDIUM  
& LARGE



DUAL LAYER CONSTRUCTION

### PRODUCT SPECIFICATIONS

|                |                         |
|----------------|-------------------------|
| Product Code   | KL200                   |
| Colour Options | Blue & Tan              |
| Application    | Structural Firefighting |
| Sizes          | Small, Medium & Large   |
| Certification  | NFPA 1971:2018          |

^ Please specify a size when ordering





## LIFE LINERS PBI® FLASH HOOD

The Life Liner PBI Flash Hood is constructed from a separate head piece and bib for a superior fit. The fabric is a unique combination of PBI® and Lenzing FR stitched together with 100% Nomex® thread.

- Separate head with sewn on back and front bib. Back of head ends at the nape of the neck for improved fit and comfort
- Easy-Seal Face opening that goes on easy and seals tight
- Dual layer construction
- Fabric: 20% PBI®/ 80% Lenzing FR
- All head and bib seams are sewn with a flat lock stitch
- 3.8cm binding sewn to hem through folder with a three thread cover stitch to create a 1.25cm finished bound hem
- Weight: 185gsm

## LIFE LINERS NOMEX® FLASH HOOD

Australian firefighters work in challenging conditions and need clothing that provides protection and comfort so they can focus on saving lives. Life Liners flash hoods are designed with the wearer in mind delivering the protection they need as well as the comfort they're searching for.

- Separate head with sewn on back and front bib. Back of head ends at the nape of the neck for improved fit and comfort
- Easy-Seal Face opening that goes on easy and seals tight
- Dual layer construction
- Fabric: 20% Nomex®/ 80% Lenzing FR
- All head and bib seams are sewn with a flat lock stitch
- 3.8cm binding sewn to hem through folder with a three thread cover stitch to create a 1.25cm finished bound hem
- Weight: 199gsm

| PRODUCT SPECIFICATIONS |                         |
|------------------------|-------------------------|
| Product Code           | FHPFR9723ES             |
| Application            | Structural Firefighting |
| Sizes                  | One size fits most      |
| Certification          | NFPA 1971:2018          |

| PRODUCT SPECIFICATIONS |                         |
|------------------------|-------------------------|
| Product Code           | FH33                    |
| Application            | Structural Firefighting |
| Sizes                  | One size fits most      |
| Certification          | NFPA 1971:2018          |



## HOT SHIELD FACE MASK

The HS-2 Hot Shield Mask is a multi layer, face protection mask designed for Wildland Firefighters. Hot Shield protects the face and neck against burns while reducing inhalation of smoke and ash.

- Additional protection for face and neck area
- Multiple layers of CarbonX<sup>®</sup> maintain crucial airspace in front of the mouth and nose
- Scotchlite<sup>®</sup> Reflective trim
- Nomex<sup>®</sup> thread
- Weight: 112 grams
- Package includes 2 RDM3, disposable P2 respiration masks with plastic valve
- Machine Washable



**P2 MASK INCLUDED**



**MULTI LAYER CONSTRUCTION**



**RDM3  
CUP STYLE MASK**

### PRODUCT SPECIFICATIONS

|              |                       |
|--------------|-----------------------|
| Product Code | RHS-2+                |
| Application  | Wildland Firefighting |
| Sizes        | One size fits most    |



## P2 DISPOSABLE FOLDING MASK - SINGLE VALVE

Pac Fire's folding P2 are designed for emergency service personnel who demand a high level of personal protection from airborne hazards experienced in the work environment.

- P2 Dust Mask for protection against dust and mist
- Plastic exhalation valve for greater ventilation
- Convenient and economical disposable mask
- Double strap mask with aluminium nose clip for firm and secure fit
- Activated charcoal layer to remove nuisance level odours
- Wide and soft non-latex straps are staple free to minimise irritation

### PRODUCT SPECIFICATIONS

|               |  |
|---------------|--|
| Product Code  | RDM30                                    |
| Application   | Wildland Firefighting<br>General Purpose |
| Certification | AS/NZS 1716                              |

## P2 DISPOSABLE FOLDING MASK - TWIN VALVE

The twin valve folding mask is used to protect against mechanically and thermally generated particulates.

- P2 Dust Mask for protection against dust, mist and wildland fire smoke
- Equip with two plastic exhalation valves
- Individually wrapped, vertically folding mask
- Double strap mask with aluminium nose clip for firm and secure fit
- Activated charcoal layer to remove nuisance level odours
- Wide and soft non-latex straps are staple free to minimise irritation

### PRODUCT SPECIFICATIONS

|               |  |
|---------------|--|
| Product Code  | RDM30TV                                  |
| Application   | Wildland Firefighting<br>General Purpose |
| Certification | AS/NZS 1716                              |

## CITROSQUEEZE®

NFPA 1851 compliant CITROSQUEEZE® is the recommended technical detergent available for safely cleaning oil, soot, grease and other contaminants from all types of PPC and FR clothing.

- For routine cleaning of all PPC and FR clothing
- Easy to use, high performance cleaning solution
- Effective on dirt and grime
- Available in a 946ML spray bottle "pre-treatment" or a bulk 3.78L jug of technical detergent

### PRODUCT SPECIFICATIONS

|               |  |
|---------------|--|
| Product Code  | FS-C   |
| Options       | FS-C-032-6 - Pre-Treatment - 946ML Spray Bottle (Box of 6 bottles)<br>FS-C-001-4 - Technical Textile Detergent - 3.78L Jug (Box of 4 jugs) |
| Certification | NFPA 1851  |



## RECOMMENDED ROUTINE CLEANING FOR STRUCTURAL & WILDLAND ENSEMBLES

- 1** Brush off debris
- 2** Pre-treat heavily soiled or spotted areas with CITROSQUEEZE® spray
- 3** Unless otherwise instructed, load machine to 80% of its rated capacity
- 4** Use mild wash settings, a mild detergent, and warm water temperatures
- 5** Following washing, Air dry by placing in designated drying bay
- 6** Inspect the garment
- 7** If necessary, clean again
- 8** *Ask yourself, is an advanced inspection necessary?*

For more information on Advanced Cleaning, Inspection and Decontamination check out PAC+CARE, page 133.



# GLOVES



## GLOVE FEATURES

- 1** Specially designed, flexible heat absorber over the knuckles
- 2** Reflective piping
- 3** Back of hand: Titan PBI® 1260
- 4** Palm of hand: Kevlar / Nomex® knit with a carbon-granite-silicone coating
  - Moisture barrier: Crosstech® providing protection against blood borne pathogens
  - Back of hand: Titan PBI® 1260
- 5** Cuff: Nomex®
- 6** Anatomically shaped for fit and comfort
  - Available in a wide range of sizes: 3X Small (5) - 4X Large (14)
  - Australia's first AS/NZS 2161.6:2014 certified fabric glove



**OPTIMUM  
DEXTERITY**



**SUPERIOR  
WASH COUNT**



**QUICK  
DRY**

### PRODUCT SPECIFICATIONS

|               |                                   |
|---------------|-----------------------------------|
| Product Code  | GTITAN49A                         |
| Application   | Structural Firefighting           |
| Certification | AS/NZS 2161.6:2014<br>EN659: 2008 |
| Size Range    | 3X Small (5) -<br>4X Large (14)   |

*^ Please specify a size when ordering*

# TITAN PBI® FIREFIGHTING GLOVES

Bristol Uniforms in collaboration with Pac Fire Australia have developed a game changer in hand protection.

The Titan PBI® Structural Firefighting Gloves represent years of research that balance paramount protection and optimum dexterity.

Developed with the wearer in mind, the Bristol glove offers a unique, anatomical fit and broad sizing range. These gloves are tough! The Titan PBI® gloves boast an exceptional lifespan due to their resilience when undergoing regular cleans.





## FIREWALL 3 FIREFIGHTING GLOVES

The Firewall 3 glove provides optimum protection without diminishing comfort and dexterity. These gloves have been designed to work harmoniously with a range of structural ensembles.

- 3M reflective trim
- Back of hand/Palm of the hand: Cow grain leather
- Moisture barrier: Porelle - providing protection against moisture as well as a range of pathogens and chemicals
- Thermal Lining: Non-woven Kevlar® fabric
- Cuff: 100mm fire rated, elasticated

| PRODUCT SPECIFICATIONS |                             |
|------------------------|-----------------------------|
| Product Code           | GFWN3                       |
| Application            | Structural Firefighting     |
| Size Range             | X Small (6) - 2X Large (11) |
| Certification          | AS/NZS 2161.6:2014          |



## SUPER MARS PLUS FIREFIGHTING GLOVES

The Super Mars Plus glove is an ergonomic, three layered assembly, designed for Australasian structural firefighting conditions.

- Reinforced fire resistant carbon impact protection shell
- Reflective trim
- Back of hand/Palm of the Hand: Fire Block leather special 100% Kevlar® with silicon/carbon
- Moisture barrier: Crosstech® X-trafit providing protection against bloodborne pathogens
- Thermal Lining: Kevlar® with silver threads (anti-bacterial and odour-inhibiting)
- Cuff: 110mm long Kevlar®

| PRODUCT SPECIFICATIONS |                              |
|------------------------|------------------------------|
| Product Code           | G8038W                       |
| Application            | Structural Firefighting      |
| Size Range             | 2X Small (5) - 4X Large (13) |
| Certification          | AS/NZS 2161.6:2014           |

COMING SOON



## HERCULES FIREFIGHTING & RESCUE GLOVES

The ideal combination of features make Hercules by Bristol the perfect wildland firefighting and rescue glove. These hybrid firefighting / rescue gloves boast a high cut level and long service life.

- Back of hand: High visibility, flame retardant Modacrylic
- Palm of hand: Cow split leather
- Lining: Composite Kevlar® & glass fibre
- Membrane: Polyurethane (optional)
- Cuff: 85mm long Kevlar®
- High level of cut resistance
- Cuff tab for quick and easy donning
- Padded knuckle protectors

| PRODUCT SPECIFICATIONS |   |
|------------------------|---|
| Product Code           | GHERCPL - Polyurethane Lined<br>GHERCUL - Unlined |
| Application            | Wildland Firefighting<br>Technical Rescue         |
| Size Range             | 2X Small (5) - 2X Large (12)                      |
| Certification          | *AS/NZS 2161.6:2003 TYPE 1                        |

^ Please specify a size when ordering \* Certification pending





## FIREWALKER FIREFIGHTING & RESCUE GLOVES

The Firewalker from Protective Industrial Products provides sound wearer comfort and protection at a competitive price.

- 3M reflective trim
- Back of hand: 1.8mm leather
- Palm of hand: 1.8mm leather that extends down onto the cuff
- Thermal Lining: Wool (optional)
- Cuff: Wool
- Kevlar® stitching
- Wool lined and unlined options available

| PRODUCT SPECIFICATIONS |   |
|------------------------|---|
| Product Code           | GFWWCW - Wool Lined<br>GFWWCU - Unlined   |
| Application            | Wildland Firefighting<br>Technical Rescue |
| Size Range             | 2X Small (5) - 3X Large (12)              |
| Certification          | AS/NZS 2161.6:2003 TYPE 1                 |



## FIRESTOP FIREFIGHTING & RESCUE GLOVES

Back to basics. Firestop gloves economically deliver comfort and protection for wildland firefighting and rescue applications.

- Back of hand: 1.8mm leather
- Palm of hand: 1.8mm leather that extends down onto the cuff
- Thermal Lining: Wool (optional)
- Cuff: Kevlar® knit
- Kevlar® stitching

| PRODUCT SPECIFICATIONS |   |
|------------------------|---|
| Product Code           | GFSKCU - Unlined                          |
| Application            | Wildland Firefighting<br>Technical Rescue |
| Size Range             | 2X Small (5) - 3X Large (12)              |
| Certification          | AS/NZS 2161.6:2003 TYPE 1                 |



## X-RESCUE TECHNICAL RESCUE GLOVES

X-Rescue gloves hold an anatomical shape for premium dexterity and comfort. They feature additional padding under the palm and carbon knuckle protectors for optimum performance in a multitude in rescue situations.

- Reinforced carbon impact knuckle protectors
- Reflective piping
- Back of hand: Amara leather and Nylon
- Palm of hand: Polyamide Nylon and Elastan blend with Kevlar®
- Padding on the underside of the hand
- Lining: Kevlar® and Fibreglass
- Cuff: Elasticised Nylon
- Cut level: 4

| PRODUCT SPECIFICATIONS |                             |
|------------------------|-----------------------------|
| Product Code           | GXRESCUE                    |
| Application            | Technical Rescue            |
| Size Range             | X Small (6) - 2X Large (12) |
| Certification          | EN388: 2016                 |

^ Please specify a size when ordering



## RECOMMENDED ROUTINE CLEANING FOR STRUCTURAL & WILDLAND GLOVES

- 1 Pre-treat heavily soiled or spotted areas of each glove with CITROSQUEEZE® spray
- 2 Fill an assigned tub with a mixture of water <math><40^{\circ}\text{C}</math> and CITROSQUEEZE®
- 3 Put gloves on your hands, momentarily place them in the tub then bring them out and rub them together
- 4 Lightly scrub with a soft bristle brush
- 5 Rinse with warm water
- 6 Air dry by placing in designated drying bay. DO NOT dry in the sun or heavily lit areas
- 7 Inspect the gloves
- 8 If necessary, clean again
- 9 *Ask yourself, is an advanced inspection necessary?*



**FOOTWEAR**



## HADES FEATURES

- 1** Upper: FR Hydrophobic cow hide leather (2.5 - 2.7mm)
  - Thermal Lining: GORE-TEX®
  - Insole: Moisture wicking and washable Ortholite® Air System ventilation footbed with memory foam midlayer, arch support and shock absorbing heel
- 2** Sole: Injected Dual Density Rubber heat resistant up to 300°C and SRC rated slip
  - Stainless steel midsole cut resistant strip 35mm above nip line
- 3** Protective steel toe cap resisting an impact of up to 200 joules
- 4** Quick release 200mm front zip
- 5** High visibility panels
  - Lightweight at just 1.07kgs



GORE-TEX®  
LINING



ANTI STATIC



WATER  
RESISTANT

| PRODUCT SPECIFICATIONS |                         |
|------------------------|-------------------------|
| Product Code           | FWF2AR1354              |
| Application            | Structural Firefighting |
| Sizes                  | UK SIZING 3-15          |
| Certification          | AS/NZS 4821:2014        |

^ Please specify a size when ordering



## ROBUST & COMFORTABLE PROTECTION

"Hades" from YDS is a robust and comfortable fire and rescue boot.

Built to provide premium protection, the Hades boots are made from 2.5-2.7mm fire resistant cow hide leather. Hades are manufactured to include additional safety features such as steel toe caps, a steel midsole with cut resistant strip, shock absorbing dual density shock absorbing rubber soles and more.





## SKELLERUP FIREFIGHTER EXTREME

Type 3 structural fire fighting boots are designed to provide firefighters with the very highest level of available protection.

The Skellerup Firefighter Extreme takes this protection even further with additional levels of chemical resistance to ASTM F739 and linings woven from a combination of Nomex® and Kevlar® for ultimate comfort and protection.

- Inner lining: woven Nomex® / Kevlar®
- Slip resistant SRC commando outsole with ladder grips
- Penetration resistant composite midsole
- Comfort form steel toe cap
- Cut out pull handles
- Cushioned shin guard
- Multi-fit footbed system
- Resistant to fuel oil, mild acids, mild alkalis and hazardous materials
- Insulating against electrical shocks



**ELECTRIC SHOCK  
INSULATION**



**CHEMICAL  
RESISTANT**

| PRODUCT SPECIFICATIONS |   |
|------------------------|---|
| Product Code           | FWFSF8  |
| Application            | Structural Firefighting                                       |
| Sizes                  | UK SIZING 3-15  |
| Certification          | AS/NZS 4821:2014<br>AS/NZS 2210.3<br>EN 15090<br>EN ISO 20345 |

*^ Please specify a size when ordering*



## POSEIDON STRUCTURAL

YDS Poseidon firefighting boots are manufactured from premium heinen full grain leather with a GORE-TEX® waterproof, breathable lining. The dual density rubber injected sole provides slip resistance as well as premium shock absorption.

- Upper: Full grain cow hide (2.5-2.7mm)
- Inner lining: GORE-TEX® membrane
- Lightweight injected flame retardant dual density rubber sole unit
- Cut resistant strip around the top of the sole
- Stainless steel midsole
- Protective steel toe cap resisting an impact of up to 200 joules

## APOLLO WILDLAND

Apollo is a strong and durable boot made specifically for wildland firefighting and rescue work. The combination of fire grade cow hide and Tencate® provides the wearer a high level of protection while the air injected midsole delivers cushion comfort.

- Upper: Full grain cow hide (2.5-2.7mm) combined with Tencate® flame retardant textile
- Inner Lining: Abrasion resistant, moisture wicking textile
- Lightweight injected flame retardant dual density rubber sole unit
- Tex® nail-proof midsole
- Protective aluminium toe cap resisting an impact of up to 200 joules

### PRODUCT SPECIFICATIONS

|               |                         |
|---------------|-------------------------|
| Product Code  | FWFF300GTIN             |
| Application   | Structural Firefighting |
| Sizes         | UK SIZING 3-15          |
| Certification | AS/NZS 4821:2006        |

### PRODUCT SPECIFICATIONS

|               |   |
|---------------|---|
| Product Code  | FWF2AR1352                                |
| Application   | Wildland Firefighting<br>Technical Rescue |
| Sizes         | UK SIZING 3-15                            |
| Certification | AS/NZS 4821:2006                          |

^ Please specify a size when ordering



## RECOMMENDED ROUTINE CLEANING FOR STRUCTURAL & WILDLAND FOOTWEAR

- 1** Pre-treat heavily soiled or spotted areas of each boot with CITROSQUEEZE® spray
- 2** Fill an assigned tub with a mixture of water <math><40^{\circ}</math> C and CITROSQUEEZE®
- 3** Momentarily place them in the tub then remove
- 4** Lightly scrub with a soft bristle brush
- 5** Rinse with warm water <math><40^{\circ}</math> C
- 6** Remove any excess moisture with a paper towel
- 7** *Ask yourself, is an advanced inspection necessary?*
- 8** *Air dry by placing in designated drying bay*

For more information on Advanced Cleaning, Inspection and Decontamination check out PAC+CARE, page 133.





# LIGHTING & TORCHES

L5000

NEW

LCF5.1

Hand Lamp & Charger Base sold separately

## LED TORCH L5000 POWER ADARO

The L5000 is a tough, rechargeable hand lamp from Adalit. Constructed from thermoplastic resins, this durable torch is resistant to impacts, extreme temperatures and corrosive substances.

The swivel head has 5 independent locking positions delivering the bright light from the high intensity LEDs, right where you need it.

- Thermoplastic resin with high resistance to impacts, extreme temperatures and corrosive substances.
- 7 LEDs (1 x 3W high power-spot beam and strobe function / 2 x floodlight / 2 x signalling-blue or amber light / 2 x tail beacon-red light).
- Two oversized, soft touch buttons
- Runtime display
- Low, medium and high power settings
- Burn time: 3hr high, 6hr medium, 12hr low
- Carry lamp hands free with convenient shoulder strap
- Powered by a rechargeable Li-Ion battery (3.7v / 8800 mAh)
- Hand lamp and charger sold separately



SWIVEL HEAD



VISIBLE FOR OVER 800M

### PRODUCT SPECIFICATIONS

|               |                         |                            |
|---------------|-------------------------|----------------------------|
| Product Code  | L.5000 Hand Lamp        | LCF5.1 Single Charger Unit |
| Certification | Ingress protection IP66 | Ingress protection IP54    |

^ Multi charger units available



## LED TORCH L3000 POWER ADARO

Adalit's L3000 Power is a rechargeable professional torch that supplies bright, white LED light directly where you need it. This lightweight and versatile torch can be carried comfortably in the hand and also in large pockets.

- Three power settings: high, medium & low
- 3 white LED's with 4 hour (high), 6 hour (medium) and 8 hour (low) burn time
- Light output 300lm with a brightness of 15,000 candela
- Thermoplastic resin torch body resists impacts of up to 2m
- Easy to operate, oversized, soft touch power buttons
- Antistatic protection
- Chemical resistant
- Powered by a rechargeable 3.7v Li-Ion battery
- Versatile swivel head with 3 locking points
- Runtime display
- Booster function to illuminate long distances with a greater penetrating light beam.
- Lightweight at just 500g including the battery



SWIVEL HEAD



POWERED BY  
HIGH INTENSITY  
LEDS



ANTI STATIC



CHEMICAL  
RESISTANT

### PRODUCT SPECIFICATIONS

|               |                            |                                  |
|---------------|----------------------------|----------------------------------|
| Product Code  | L.3000P<br>Hand Lamp       | C.1000<br>Single Charger<br>Unit |
| Certification | Ingress protection<br>IP67 | Ingress protection<br>IP54       |

^ Multi charger units available



## LED TORCH L5 PLUS ADARO

L5 Plus torch is a multifunctional flashlight that can be used both as a hand torch and on a firefighter helmet.

- Two power settings: high & low
- White LED with a 4 hour (high) / 30 hour (very low) burn
- Light output 135lm
- Photoluminescent bezel increases visibility
- Durable and impact resistant thermoplastic resin torch body
- Intelligent energy management
- 4 x AAA Alkaline batteries (L.5PLUS.S) or a 3.7v Li-ion battery (L.5PLUS.R)
- Can be mounted on Pacific Helmets using the A107118 Helmet Clip (sold separately)
- Charger for L.5PLUS.R sold separately (CL5.1)

| PRODUCT SPECIFICATIONS |   |
|------------------------|---|
| Product Code           | L.5PLUS   |
| Options                | L.5PLUS.S - 4 x AAA Batteries<br>L.5PLUS.R - Rechargeable |
| Certification          | ATEX Zone Intrinsically Safe<br>Ingress protection IP67   |

^ Multi charger units available

## LED TORCH L1 PENLIGHT ADARO

The L1 is a multi-purpose hand and helmet LED flashlight that includes a universal helmet adapter. The built-in neodymium magnet enables the L1 to attach the torch to any metallic surfaces.

- White LED with an 18 hour burn
- Light output 100lm
- Shock resistant rubber casing
- Integrated neodymium magnet
- Antistatic protection
- Chemical resistant
- Powered by 2 x AAA Alkaline Batteries
- Can be mounted on any helmet or hard hat using clip mount (included)

| PRODUCT SPECIFICATIONS |   |
|------------------------|---|
| Product Code           | L.1   |
| Certification          | ATEX Zone Intrinsically Safe<br>Ingress protection IP67 |



## ELED TORCH 3AA CPO UNDERWATER KINETICS

Smaller. Lighter. Brighter.  
The 3AA eLED from Underwater Kinetics is a flashlight with superior LED technology that is lightweight and affordable.

- eLED with a 8 hour burn
- Light output 110lm
- Beam distance 92m
- Depth rating 3.05m
- Compound Path Optics (CPO) technology improves visibility and efficiency - especially in poor visibility conditions
- Push button tail switch, switches light between ON/OFF with continuous or momentary action
- Powered by 3 x AA / LR6 Alkaline Batteries (included)
- Can be mounted on Pacific Helmets using the B2066114 Helmet Clip (sold separately)
- Made in the USA

### PRODUCT SPECIFICATIONS

|               |  |
|---------------|--|
| Product Code  | UKT10034+  |
| Certification | Class 1, Division 1<br>Intrinsically Safe<br>Ingress protection IP67 |

## ELED TORCH 4AA ZOOM UNDERWATER KINETICS

Firefighters and industrial workers all over the world trust UK's 4AA eLED Zoom flashlight to get the job done. It can be easily attached to a hardhat or helmet for superior hands-free illumination.

- eLED with a 5 hour burn
- Light output 77lm
- Depth rating 3.05m
- Projection Optics let you zoom with a twist of the bezel from a wide beam to an intense spot
- Push button front switch, switches light between ON/OFF with continuous or momentary action
- Powered by 4 x AA / LR6 Alkaline Batteries (included)
- Tough, electrically non-conductive, non-corroding ABS and polycarbonate plastic construction
- Can be mounted on Pacific Helmets using the B2066114 Helmet Clip (sold separately)
- Made in the USA

### PRODUCT SPECIFICATIONS

|               |  |
|---------------|--|
| Product Code  | UKT14506   |
| Certification | Class 1, Division 1<br>Intrinsically Safe<br>Ingress protection IP67 |

## ELED TORCH 4AA RED HERCULITE UNDERWATER KINETICS

Underwater Kinetics is proud to have over 40 years of history manufacturing the Red Herculite.

The Red Herculite is a flashlight with superior LED technology that is lightweight and affordable.

- eLED with a 8 hour burn
- Light output 180lm
- Depth rating 3.05m
- Push button tail switch
- All-weather use
- Chemical resistant
- Water resistant to 1m
- Powered by 4 x AA / LR6 Alkaline Batteries (included)
- Can be mounted on Pacific Helmets using the B2066114 Helmet Clip (sold separately)
- Made in the USA

### PRODUCT SPECIFICATIONS

|               |                         |
|---------------|-------------------------|
| Product Code  | UKT514609-7A            |
| Certification | Ingress protection IP67 |



## ELED GATORLITE

The high intensity Gatorlite® flashlight features the latest innovations in 3C hand light design for reliable performance.

- eLED with a 32 hour burn
- Light output 125lm
- Beam distance 50m
- Compound Path Optics (CPO) technology improves visibility and efficiency - especially in poor visibility conditions
- Large push button switch works with heavy gloves
- Powered by 3 x C / Alkaline Batteries
- All-weather use
- Beam produces a bright spot with almost no peripheral light so nearby personnel are not affected
- Ergonomic belt clip allows for more comfortable and secure grip
- High Impact ABS, LEXAN®, polyurethane rubber, and stainless steel construction for durability
- Made in the USA

### PRODUCT SPECIFICATIONS

|               |  |
|---------------|--|
| Product Code  | UKT22101   |
| Certification | Class 1, Division 1<br>Intrinsically Safe<br>Ingress protection IP67 |



## VIZION® ELED HEADLAMP 3AA UNDERWATER KINETICS

The Vizion® Headlamp from Underwater Kinetics is waterproof for all-weather use and it's built tough to withstand the most challenging environments.

- High and Low power settings
- eLED with 13hrs (high)/7 hrs (low) burn
- Light emission: 65lm (high)/35lm (low)
- Beam distance: 60m (high)/38m (low)
- Depth rating 10m
- Compound Path Optics (CPO) technology improves visibility and efficiency - especially in poor visibility conditions
- All-weather use
- Large push button control switch works with heavy gloves
- Powered by 3 x AAA / Alkaline (included) or Lithium
- 3 Selectable beam patterns - Spot, Diffuse and Red Diffuse
- Made in the USA

### PRODUCT SPECIFICATIONS

|               |                         |
|---------------|-------------------------|
| Product Code  | UKT17018                |
| Certification | Ingress protection IP67 |



**NEW**

## LIGHTHOUSE TORCH

The Lighthouse torch is a multi-functional personal lighting device. It can be hand-held like a traditional flashlight, worn on a safety vest as well as wildland or structural firefighting clothing, magnetically mounted on a metal work area, or stood up on any flat surface.

- eLED with a 8.5 hour burn
- Light output 130lm
- Pivoting head – for use as a hand held flashlight
- Neodymium magnet – mounts to any steel surface for use as a work light
- Powered by 4 x AA / LR6 Alkaline Batteries
- Made in the USA

### PRODUCT SPECIFICATIONS

|               |  |
|---------------|--|
| Product Code  | UKT514703  |
| Certification | Class 1, Division 1<br>Intrinsically Safe<br>Ingress protection IP67 |



# BEACONS



## 290 SERIES FEATURES

- 1** Patented fresnel lens to maximise beam visibility
- 2** High luminosity, solid state LEDs, rated for 100,000 hour + operating life
- 3** Clear, shatterproof polycarbonate lens
- 4** Fail-safe positive activation microswitch to prevent accidentally turning the beacon off
- 5** Colour coded, beacon light pins
- 6** High visibility, durable, impact resistant ABS plastic beacon body
- 7** Hard wearing ABS plastic clips
  - Powered by 4 x AA batteries
  - Precision o-rings making the beacon waterproof, dustproof and safe to operate in hazardous areas
  - Flash rate 165-185fpm
  - Single (steady on and flash) or dual (dual flash only) coloured LED
  - 200mm tall

### PRODUCT SPECIFICATIONS

|                      |  |
|----------------------|--|
| <b>Product Code</b>  | EFAT290 - Single Light (steady on & flash)<br>EFAT293 - Dual Light (dual flash only)   |
| <b>Options</b>       | EFAT290 A - Amber<br>EFAT290 G - Green<br>EFAT290 R - Red<br>EFAT290 B - Blue<br><br>EFAT293 BW - Blue / White<br>EFAT293 RA - Red / Amber<br>EFAT293 RW - Red / White<br>EFAT293 RB* - Red / Blue |
| <b>Certification</b> | IECEx & ATEX Ex ic T4 Gc<br>Intrinsically Safe<br>Ingress protection IP66  |



**INTRINSICALLY  
SAFE  
IP66**



**POWERED BY  
SOLID STATE  
LEDS**



**VISIBLE FOR  
OVER 1KM**

*^ Please specify options when ordering  
\* Available for Emergency Services purchases only*



# SAFETY IN A FLASH

Eflare Beacons are lightweight, compact and easy to deploy. They provide a fast solution to creating a highly visible warning or safety zone.

The beacons boast an incredibly long service life thanks to high quality manufacturing materials such as shock resistant ABS plastics and shatterproof polycarbonate.

Eflare provides a safe, reusable and cost effective alternative to pyrotechnic or chemical flares. They are visible for a distance of more than 1 kilometre without night vision, point fixation or distance judgement problems associated with strobe or incandescent lighting.





## 280 SERIES COMPACT EFLARE

Eflares tried and trusted safety beacon in a compact size. Standing just 15cm tall this tough little beacon still supplies the user with 20+ hours of operating life per battery change.

- High luminosity, solid state LEDs
- Flash rate 165-185fpm
- Single (steady on or flash) or dual (flash only) coloured LED
- Clear, shatterproof polycarbonate lens
- High visibility, durable, impact resistant ABS plastic beacon body and side clip
- Precision o-rings making the beacon waterproof, dustproof and safe to operate in hazardous areas
- Powered by 4 x AA batteries
- 150mm tall

## 700 SERIES EFLARE

All the features of the 290 series Eflares - powered by 2, D Cell batteries increasing operating life to 40+ hours. The handy battery charge indicator lets you keep track of cell life quickly and easily.

- High luminosity, solid state LEDs
- Flash rate 165-185fpm
- Single (steady on or flash) or dual (flash only) coloured LED
- Clear, shatterproof polycarbonate lens
- ABS plastic beacon body and side clips
- IP66 and Intrinsically Safe
- Powered by 2 x D Cell batteries
- 200mm tall
- Battery charge indicator

| PRODUCT SPECIFICATIONS |   |   |
|------------------------|---|---|
| Product Code           | EFAT280 - Single light (steady on or flash)                               | EFAT283 - Dual Light (flash only)   |
| Options                | EFAT280A - Amber<br>EFAT280B - Blue<br>EFAT280R - Red<br>EFAT280W - White | EFAT283AW - Amber / White<br>EFAT283RB* - Red / Blue<br>EFAT283RW - Red / White |
| Certification          | Ingress protection IP66   | IECEX & ATEX Ex ic T4 Gc<br>Intrinsically Safe                                  |

| PRODUCT SPECIFICATIONS |   |  |
|------------------------|---|--|
| Product Code           | EFAT700 - Single Light (steady on or flash)   | EFAT730 - Dual Light (flash only)              |
| Options                | EFAT700A - Amber<br>EFAT700B - Blue<br>EFAT700G - Green<br>EFAT700R - Red<br>EFAT700W - White | EFAT730RB* - Red / Blue                        |
| Certification          | Ingress protection IP66   | IECEX & ATEX Ex ic T4 Gc<br>Intrinsically Safe |

^ Please specify options when ordering  
\* Available for Emergency Services purchases only

## EFLARE PACKS

Everything you need to set up a highly visible warning or safety zone in one convenient pack.

Each pack includes

- 4** 730 Series Eflare Beacons
- 4** Eflare Base Mounts (EFBASE)
- 4** Eflare Cone Clips (EF500CM)
- 1** Large Eflare Bag (EFMBAG)

### PRODUCT SPECIFICATIONS

|                      |   |
|----------------------|---|
| <b>Product Code</b>  | EFEMS++   |
| <b>Options</b>       | EFEMS++ RA - Dual Flash Red / Amber<br>EFEMS++ RB* - Dual Flash Red / Blue<br>EFEMS++ RW - Dual Flash Red / White |
| <b>Certification</b> | Intrinsically Safe<br>Ingress protection IP66   |

*^ Please specify options when ordering*

*\* Available for Emergency Services purchases only*





Eflare and base sold separately

## EFLARE RUBBER BASE

General purpose, rubberised base for all Eflare models.

### PRODUCT SPECIFICATIONS

Product Code EFBASE

## EFLARE AVIATION BASE

A secure, special purpose rubber mount for all models of Eflare.

### PRODUCT SPECIFICATIONS

Product Code EFBASEAV

## EFLARE MAGNETIC BASE

Magnetic base for all models of Eflare.

- Rated to 80kmh when securely mounted on vehicles

### PRODUCT SPECIFICATIONS

Product Code EFMAGBASE



## EFLARE CONE CLIP

Conveniently hang your Eflare beacon from most traffic cones

### PRODUCT SPECIFICATIONS

Product Code EF500CM



*\*Not suitable for moving vehicles*

## EFLARE MAGNETIC CLIP

A magnetic clip suitable for attaching any Eflare beacon to a metal surface.

### PRODUCT SPECIFICATIONS

Product Code EFMAGCLIP



*\*Not suitable for moving vehicles*

## EFLARE SUCTION CLIP

Attach your Eflare Beacon to a smooth surface

### PRODUCT SPECIFICATIONS

Product Code EFSCLIP



*Suitable for the 280, 290, 700 & 730 beacons*

## EFLARE HOOD

Attaches to the top of an Eflare beacon to limit the spread of the light beam.

### PRODUCT SPECIFICATIONS

Product Code EFHOOD2



## EFLARE SMALL BAG

Conveniently carry 2-3 Eflare beacons plus accessories

### PRODUCT SPECIFICATIONS

Product Code EFSBAG



## EFLARE LARGE BAG

Stow and carry 4-6 Eflare Beacons plus accessories

### PRODUCT SPECIFICATIONS

Product Code EFMBAG



# FANS & VENTILATION



## SUPERCHARGE YOUR RESPONSE TIME



DUAL POWER



LIGHTWEIGHT  
& PORTABLE

Blowhard Fans have single handedly revolutionised the way ventilation in emergency situations is approached.

Blowhard's BH-20 PPV fan has been designed for high pressure to effectively drive ventilation. The high velocity jet stream produced by the BH-20 assists in building pressure to effectively clear smoke from the structure.

Boasting unique design and construction, the BH-20 is lighter, smaller, incredibly durable and more powerful than other fans on the market today.

The soft start motor can be powered with both a mains outlet or Blowhard's long lasting, Li-Ion battery pack. This feature allows the fan to be set up faster and started instantly - in some instances cutting down response time by up to 6 minutes.



## FAN FEATURES

- Dual powered operates on battery and mains power
- Soft start, variable speed motor
- Maximum Amps 7amps at 110V / 3.5amps at 220V
- Recover 80% charge in 1 hour / full charge in 3 hours (no memory)
- Runtime: 35 minutes at 10,500CFM or 60 minutes at 9,000CFM
- Includes shoulder strap for easy deployment and repositioning
- Easy to operate controls
- Produces high velocity jet stream

- Starts instantly on battery power
- Doubles as PPV fan
- Weighs only 27kgs

## PRODUCT SPECIFICATIONS

|               |                          |
|---------------|--------------------------|
| Product Code  | PPVBH-20DP               |
| Application   | Structural Firefighting  |
| Certification | Ingress Protection: IP66 |



# HOSE & FITTINGS



PACMONOFLEX OR 25/60

PACHSSSHV25/30



HAND PROTECTOR

ANT-KINK PROTECTOR

BAND-IT CLAMPING  
(MBANDING)

ICONOS CLAMPING

## MONOFLEX S HD FIRE HOSE

Pac Fire's Monoflex hose is a lightweight and flexible type S fire hose. The inside of the hose is made from high-quality, very light synthetic rubber. While the jacket is constructed from 100% high tenacity synthetic polyester yarn and special monofilament yarns in the weft provide dimensional stability.

- Resistant to aging and ozone and UV
- Excellent abrasion resistance
- Temperature range from -40°C up to +100°C
- Minimum friction loss due to very smooth inner lining

| INSIDE DIAMETER<br>(in mm) | WEIGHT<br>(in g) | WORKING PRESSURE<br>in bar   in PSI | BURSTING PRESSURE<br>in bar   in PSI |
|----------------------------|------------------|-------------------------------------|--------------------------------------|
| 25                         | 281              | 40   580                            | 100   1,450                          |

## SYNTEX SIGNAL PERCOLATING HOSE

The Syntex Signal percolating hose is a Pac Fire favourite. It's constructed from 100% high tenacity polyester yarn in a circular twill weave with warp threads multiple twisted. The inside is high-quality, very light synthetic rubber.

- Fluorescent yellow colour highly visible in darkness and smoke
- Suitable for seawater, hot water and steam
- Ageing and ozone resistant
- Temperature range from -40°C up to +100°C
- Water weeps through the jacket to prevent hose from catching fire whilst being manoeuvred around the fire ground
- Standard hose diameters 25 & 38mm. Other options available on request - lead times will apply

| INSIDE DIAMETER<br>(in mm) | WEIGHT<br>(in g) | WORKING PRESSURE<br>in bar   in PSI | BURSTING PRESSURE<br>in bar   in PSI |
|----------------------------|------------------|-------------------------------------|--------------------------------------|
| 25                         | 130              | 16   235                            | 60   870                             |
| 38                         | 225              | 16   235                            | 60   870                             |

| PRODUCT SPECIFICATIONS |  |
|------------------------|--|
| Product Code           | PACMONOFLEX OR 25/60<br>Monoflex Orange 25mm x 60m |
| Options                | PAC FIRE RECOMMENDS: 25mm Storz Couplings          |
| Certification          | DIN EN 1947:-11-B-5                                |

| PRODUCT SPECIFICATIONS |  |  |
|------------------------|--|--|
| Product Code           | PACHSSSHV25/30<br>Percolating 25mm x 30m                                     | PACHSSSHV38/30<br>Percolating 38mm x 30m     |
| Options                | Band-It Clamping, Iconos Clamping or Swaged<br>Select couplings from page 83 |  |
| Certification          | DIN 14811 : 2008 class 1   | AS 2792 - 1992 H Class<br>Germanischer Lloyd |

^ Please specify clamping and couplings when ordering

PACHSU25/60

PACHS5E38/30



**BAND-IT CLAMPING**  
(MBANDING)

**ICONOS CLAMPING**

**BAND-IT CLAMPING**  
(MBANDING)

**ICONOS CLAMPING**

## SYNTEX UNIDUR

Syntex Unidur is 100% high tenacity polyester yarn embedded in a high-quality, special synthetic rubber, extruded through the polyester weave.

- Durable and abrasion resistant
- Resistance to oil, petrol and a wide range of chemicals
- Temperature range from -40°C up to +100°C
- Low elongation and very low friction loss
- Suitable for seawater, hot water and steam

| INSIDE DIAMETER<br>(in mm) | WEIGHT<br>(in g) | WORKING PRESSURE<br>in bar   in PSI | BURSTING PRESSURE<br>in bar   in PSI |
|----------------------------|------------------|-------------------------------------|--------------------------------------|
| 25                         | 215              | 20   290                            | 70   1,015                           |
| 38                         | 300              | 20   290                            | 60   870                             |
| 52                         | 385              | 20   290                            | 60   870                             |
| 65                         | 500              | 20   290                            | 60   870                             |

### PRODUCT SPECIFICATIONS

|               |   |  |
|---------------|---|--|
| Product Code  | PACHSU25/30<br>Unidur 25mm x 30m<br>PACHSU38/30<br>Unidur 38mm x 30m                      | PACHSU52/30<br>Unidur 52mm x 30m<br>PACHSU65/30<br>Unidur 65mm x 30m         |
| Options       | Band-It Clamping, Iconos Clamping, Swaging or wire binding. Select couplings from page 83 |  |
| Certification | DIN 14811 : 2008 class 1<br>BS 6391 Type 3<br>prEN 1924 class 4<br>M.E.D. 96/98/EC        | AS 2792 - 1992 H Class<br>Lloyd's Register of Shipping<br>Germanischer Lloyd |

## SYNTEX 500-EXTRA

The 500-E is a lightweight and flexible hose with unique jacket construction which results in premium abrasion resistance.

- Constructed from 100 % high tenacity polyester yarn, circular twill weave with warp threads multiple twisted in special construction. With high-quality, very light synthetic rubber
- Weather, aging and ozone resistant
- Temperature range from - 40°C up to +100°C
- Minimum friction loss due to very smooth inner lining
- Suitable for seawater, hot water and steam

| INSIDE DIAMETER<br>(in mm) | WEIGHT<br>(in g) | WORKING PRESSURE<br>in bar   in PSI | BURSTING PRESSURE<br>in bar   in PSI |
|----------------------------|------------------|-------------------------------------|--------------------------------------|
| 25                         | 135              | 20   290                            | 65   945                             |
| 38                         | 210              | 20   290                            | 65   945                             |
| 53                         | 285              | 20   290                            | 65   945                             |
| 65                         | 370              | 20   290                            | 65   945                             |

### PRODUCT SPECIFICATIONS

|               |   |  |
|---------------|---|--|
| Product Code  | PACHS5E25/30<br>500-E 25mm x 30m<br>PACHS5E38/30<br>500-E 38mm x 30m                      | PACHSU65/30<br>500-E 65mm x 30m              |
| Options       | Band-It Clamping, Iconos Clamping, Swaging or wire binding. Select couplings from page 83 |  |
| Certification | DIN 14811 : 2008 class 1/2<br>BS 6391 Type 1<br>M.E.D. 96/98/EC                           | AS 2792 - 1992 H Class<br>Germanischer Lloyd |

^ Please specify clamping and couplings when ordering

IPCSR65  
FOR 65MM  
HOSE



IPCSR25  
FOR 25MM  
HOSE



## ICONOS HOSE CLAMPS

Iconos clamping is one of the coupling fitting options Pac Fire offers on their range of hoses. Iconos clamped hoses are field repairable and certified to a test pressure of 24 bar.

- Available for 25, 38, 52 & 65mm diameter hoses
- Constructed from forged aluminium
- Clamp is two pieces and includes nuts and bolts



### PRODUCT SPECIFICATIONS

|              |  |
|--------------|--|
| Product Code | IPCSR  |
| Options      | IPCSR25 - 25mm diameter<br>IPCSR38 - 38mm diameter<br>IPCSR52 - 52mm diameter<br>IPCSR65 - 65mm diameter |

POK8179  
65MM HOSE  
COUPLING



## STORZ COUPLINGS WITH HOSE TAIL

Pac Fire's range of hose couplings are suitable for Iconos clamping or Band-It clamping securing options. Each coupling is manufactured with a double-ribbed hose shank.

- Pressure tested to 50 Bar
- Available for 25, 38, 52 & 65mm diameter hoses
- Compatible with Iconos Hose Clamps
- Suitable for Band-It clamping or wire binding

POK8179  
UNDERSIDE VIEW  
65MM HOSE  
COUPLING



### PRODUCT SPECIFICATIONS

|              |   |
|--------------|---|
| Product Code | POK05010 - 25mm<br>IPST038 - 38mm<br>IPST052 - 52mm<br>POK8179 - 65mm |
|--------------|---|

POK6355  
FEMALE BIC  
COUPLING TO 38MM  
HOSE TAIL



POK6356  
MALE BIC  
COUPLING TO  
38MM HOSE  
TAIL



## BRITISH INSTANTANEOUS COUPLING WITH HOSE TAIL

Instantaneous coupling systems are used for a variety of water delivery applications, to connect hoses together and to other pipework and fittings.

- Made from aluminium alloy
- Available for various hose diameters
- Double ribbed hose tails
- Suitable for Band-It clamping, wire binding
- Working pressure 16 bar

### PRODUCT SPECIFICATIONS

|              |  |
|--------------|--|
| Product Code | POK6355+ - BIC Male & Female Set to 38mm Hose Tail<br>POK25399+ - BIC Male & Female Set to 65mm Hose Tail  |
| Options      | POK6355 - BIC Female Coupling to 38mm Hose Tail<br>POK6356 - BIC Male Coupling to 38mm Hose Tail<br>POK25399 - BIC Female Coupling to 65mm Hose Tail<br>POK25408 - BIC Male Coupling to 65mm Hose Tail |

^ Please specify options when ordering



**TURBOKADOR 500 HOSE LINE NOZZLE**

**PRODUCT SPECIFICATIONS**

|              |          |
|--------------|----------|
| Product Code | POK09718 |
|--------------|----------|



**WATERWALL NOZZLE**

**PRODUCT SPECIFICATIONS**

|              |          |
|--------------|----------|
| Product Code | POK26076 |
|--------------|----------|



**LOW EXPANSION FOAM BRANCHPIPE**

**PRODUCT SPECIFICATIONS**

|              |          |
|--------------|----------|
| Product Code | POK09049 |
|--------------|----------|



**LOW EXPANSION SELF EDUCING FOAM BRANCHPIPE**

**PRODUCT SPECIFICATIONS**

|              |              |
|--------------|--------------|
| Product Code | POK16005 NEN |
|--------------|--------------|

**WYE DIVIDING BREACH**



**PRODUCT SPECIFICATIONS**

|              |          |
|--------------|----------|
| Product Code | POK28712 |
|--------------|----------|



**PORTABLE POCKET MONITOR**

**PRODUCT SPECIFICATIONS**

|              |          |
|--------------|----------|
| Product Code | POK12697 |
|--------------|----------|

A COMPREHENSIVE RANGE OF POK HOSE FITTINGS ARE AVAILABLE FROM PAC FIRE.



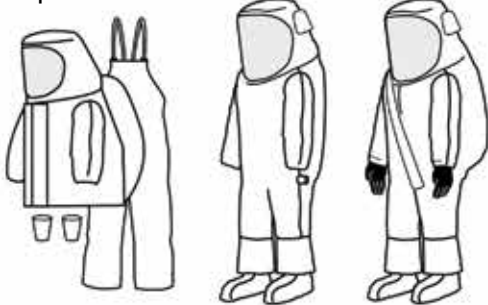
# CHEMICAL & PROTECTIVE SUITS

## KAPPLER ZYTRON 500

For more than four decades Kappler has led the industry with patented technology and proven garment designs.

The Zytron 500 range offers top level protection for demanding hazmat response. Zytron 500 material provides greater than 8 hour holdout against hundreds of chemicals with proven resistance against chemical warfare agents (CWA).

- Zytron 500 is a soft, pliable fabric that remains comfortable for extended use
- Greater than 8-hour holdout against hundreds of chemicals
- Proven holdout against Chemical Warfare Agents (CWA)
- Many features and options in a wide variety of encapsulating suits and coverall styles.
- Available in hi-viz orange and charcoal grey.
- Applications: Hazmat response, chemical handling, refuelling operations, petrochemical operations, hazardous material clean-up and remediation, CWA incineration, remediation and disposal.



SPLASH TWO PIECE ENSEMBLE

SPLASH TOTAL ENCAPSULATING

VAPOUR TOTAL ENCAPSULATING



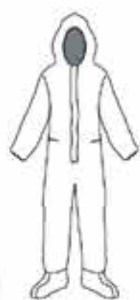
### PRODUCT SPECIFICATIONS

|               |  |
|---------------|--|
| Product Code  | CZ5H580 OR   |
| Styles        | Two Piece Ensemble<br>Splash Total Encapsulating Suit<br>Vapour Total Encapsulating Suit     |
| Options       | Heat sealed / taped or ultrasonic seams<br>Front or rear entry for total encapsulating suits |
| Certification | ASTM F 739<br>MIL-STD-282<br>NFPA 1994-2001  |

*^ Please discuss requirements when ordering*

Kappler's HazMatch<sup>®</sup> selection guide lets you search by chemical or by fabric and easily match a garment that's safe for your scenario. Use it online or get the free app for a quick, accurate recommendation. Got a suit but not sure if it's right for the hazard? Just scan the ChemScan<sup>®</sup> QR code label for the latest test results for that specific fabric.





COVERALLS



SPLASH TWO  
PIECE ENSEMBLE



SPLASH TOTAL  
ENCAPSULATING



## ZYTRON 400

Zytron 400 is a durable fabric with great physical properties and broad chemical holdout - an economical alternative to Zytron 500.

- ASTM F1001 chemical holdout performance similar to Zytron 500
- Tough fabric with excellent physical properties for demanding work applications
- Attached gloves are an available custom option
- Styles include a variety of coveralls plus total encapsulating suits and hood/jacket/trouser combos.
- Applications: Chemical handling, petrochemical operations, hazmat response and clean-up

## KAPPLER CHEMTAPE

Kappler ChemTape is a specially designed and tested adhesive tape for added barrier protection against hazardous chemicals at the seams, zippers and other openings found on chemical protective clothing.

- Chemical-tested sealing tape
- Provides strong, durable barrier protection
- Used to attach components of a protective ensemble or to reduce the possibility of gross liquid flow at interfaces
- An ideal solution when mid to high range chemical protection is needed
- Attaches protective clothing components—sleeve-to-glove, ankle-to-boot, hood-to-face piece, storm flap—suitable for pipe sealing, shelter or tent repair, and “safe room” sealing
- Applies quickly
- 48mm wide x 50 metres long

### PRODUCT SPECIFICATIONS

Product Code CS99402YE

### PRODUCT SPECIFICATIONS

|               |  |
|---------------|--|
| Product Code  | CZ4H426  |
| Styles        | Coveralls<br>Two Piece Ensemble<br>Splash Total Encapsulating Suit                           |
| Options       | Heat sealed / taped or ultrasonic seams<br>Front or rear entry for total encapsulating suits |
| Certification | ASTM F1001   |

## ADDITIONAL FABRIC & STYLE OPTIONS ARE AVAILABLE

**KAPPLER FABRICS:** Zytron 100, Zytron 100XP, Zytron 200, Zytron 300, Zytron 500, Frontline 300, Frontline 500  
**KAPPLER STYLES:** Lab Coats / Aprons, Shorts, Coveralls, Two piece ensemble, three piece ensemble, total encapsulating  
**KAPPLER CUSTOM:** If you need something not shown in our standard styles, ask about Kappler's custom solutions

*^ Please discuss requirements when ordering*

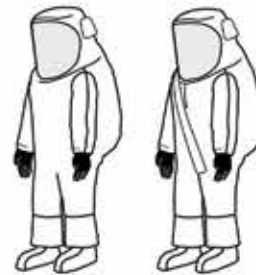


## FRONTLINE 500

NFPA-certified multi-use, single-exposure garment provides economical alternative to expensive FR reusables.

Frontline 500 is a single suit that provides three-way protection against chemical, flash-fire and radiant heat.

- Expanded view anti-fog visor system - standard on all gas (vapour) tight suits
- Removable knitted Kevlar® overglove, plus field-replaceable 2N1® Glove System which eliminates inner glove inversion
- Highly flexible 120cm gas tight AquaSeal® zipper facilitates easier donning and doffing
- Provides excellent "survivability" performance - 0% body burn in Pyroman Thermal Manikin testing
- Single garment eliminates need for two-suit NFPA 1991 configuration.
- Front and rear entry options available
- Applications: Hazmat response and chemical handling with potential for chemical flash-fire.



VAPOUR TOTAL ENCAPSULATING

### PRODUCT SPECIFICATIONS

|               |  |
|---------------|--|
| Product Code  | CF5H580 91   |
| Styles        | Vapour Total Encapsulating Suit                                |
| Options       | Heat sealed / taped or ultrasonic seams<br>Front or rear entry |
| Certification | NFPA 1991  |

^ Please discuss requirements when ordering





**FOAM**

RF3-1000



RF3-200



RF3-20



## SOLBERG RE-HEALING FOAM RF3

Solberg Re-Healing foams protect lives and property while having a minimal environmental impact.

Solberg RF3 is an effective Class B concentrate and contains only synthetic hydrocarbon surfactants. It works with all current equipment and offers excellent control and extinguishment.

- Effective Class B concentrate and contains only synthetic hydrocarbon surfactants
- Excellent control and extinguishment
- Works with common foam proportioning devices
- Use for liquid fires, chemical spills or vapour suppression
- Can be used with fresh, sea or brackish water
- Clings to vertical surfaces and hot metal
- High temperature resistance
- Long drain time
- Dry chemical compatible
- Increased burn back survivability
- Does not contain Fluorosurfactants, Fluoropolymers or Fluorotelomers

### PRODUCT SPECIFICATIONS

|               |  |
|---------------|--|
| Product Code  | RF3  |
| Options       | RF3-20 - 20 Litre Pail<br>RF3-200 - 200 Litre Drum<br>RF3-1000 - 1000 Litre Tote |
| Application   | Class B Flammable Liquid<br>Class A Combustible Solids                           |
| Certification | ICAO,<br>EN1568,<br>DEF (Aust) 5706,<br>UL and FM option available               |

^ Please specify options when ordering



## SOLBERG RE-HEALING FOAM RF6

Solberg RF6 has been successfully designed for fighting Class B fires. RF6 can be applied with all existing equipment. When proportioned at 6% concentration with water of all kinds it has the ability to flow quickly and freely across the surface of hydrocarbon flammable liquid fuel.

- Effective Class B concentrate and contains only synthetic hydrocarbon surfactants
- Excellent control and extinguishment
- Works with common foam proportioning devices
- Use for liquid fires, chemical spills or vapour suppression
- Clings to vertical surfaces and hot metal
- High temperature resistance
- Long drain time
- Increased burn back survivability
- Shelf life of 20 years plus
- Does not contain Fluorosurfactants, Fluoropolymers or Fluorotelomers.

| PRODUCT SPECIFICATIONS |  |
|------------------------|--|
| Product Code           | RF6  |
| Options                | RF6-20 - 20 Litre Pail<br>RF6-200 - 200 Litre Drum<br>RF6-1000 - 1000 Litre Tote |
| Application            | Class B Flammable Liquid<br>Class A Combustible Solids                           |
| Certification          | ICAO Level B and DEF (Aust)  |



## SOLBERG RE-HEALING FOAM 3x6 ATC

RF 3x6 ATC protects lives and property with minimal environmental impact. It can be proportioned at 3% for hydrocarbon fuels and 6% for polar fuels. RF 3x6 ATC does not contain Fluorosurfactants, Fluoropolymers or Fluorotelomers.

- Effective Class B concentrate and contains only synthetic hydrocarbon surfactants
- 3% or 6% dilution rates for broad application range
- Works with common foam proportioning devices
- Use for liquid fires, chemical spills or vapour suppression
- Can be used with fresh, sea or brackish water
- Clings to vertical surfaces and hot metal
- Long drain time
- Dry chemical compatible
- Shelf life of 20 years plus

| PRODUCT SPECIFICATIONS |  |
|------------------------|--|
| Product Code           | RF3X6  |
| Options                | RF3X6ATC - 20 Litre Pail<br>RF3X6ATC200 - 200 Litre Drum<br>RF3X6ATC21000L - 1000 Litre Tote |
| Application            | Class B Flammable Liquid<br>Class A Combustible Solids                                       |
| Certification          | ICAO<br>EN1568:3 & 4<br>LASTFire   |

^ Please specify options when ordering



## SOLBERG HIGH EXPANSION FOAM

Solberg High Expansion Foam is a synthetic, foaming agent containing, amongst other ingredients, a blend of hydrocarbon based surface active agents. This foam is primarily used to extinguish fires located in inaccessible areas like warehouses.

- Effective class A & B concentrate
- Synthetic foaming agent
- Uses displacement of air as main extinguish mechanism
- Low mixture rate makes High Expansion Foam economical
- Low environmental impact
- Non-toxic
- Can be used in conjunction with other foam products
- Induction rate of 1-2%
- Excellent fire suppression capabilities
- Fluoro-free foam

| PRODUCT SPECIFICATIONS |   |
|------------------------|---|
| Product Code           | SFHIEX  |
| Options                | SF20LHIEX - 20 Litre Pail<br>SF200LHIEX - 200 Litre Drum<br>SF1000LHIEX - 1000 Litre Tote |
| Application            | Class B Flammable Liquid<br>Class A Combustible Solids                                    |
| Certification          | EN 1568/2<br>ISO 7203-2   |



## SOLBERG FIRE-BRAKE 3150A

Solberg Fire-Brake™ 3150A is a proven Class A foam that has been used on some of the worst Australian bushfires in the past two decades.

- Effective Class A concentrate that can be used from 0.1% to 1%
- Multi-purpose foam used for mop-up, suppression, back burn and protection
- Foam holds and slowly releases water
- Clings to fuels
- Acts like a thermal barrier
- Foam can be used to blanket and smother a fire
- White in colour for easy visibility
- It can be used for ground and aerial tankers
- 3150A foam solutions are low in corrosion
- Fluoro-free foam

| PRODUCT SPECIFICATIONS |   |
|------------------------|---|
| Product Code           | SFFB3150A   |
| Options                | SF20001AU - 20 Litre Pail<br>SFFB3150A 200L - 200 Litre Drum<br>SFFB3150A 1000L - 1000 Litre Tote   |
| Application            | Class A Combustible Solids<br>Wildland Firefighting   |
| Certification          | U.S. Forest Service, Qualified Products List, Specification 5100-307a<br>(NFPA) 1150—Standard on Foam Chemicals for Fires in Class A Fuels (current edition). |

^ Please specify options when ordering



# BAGS & STORAGE OPTIONS



## BAG FEATURES

- 1** Heavy duty rip stop water resistant nylon outer fabric
  - 2** Webbing carry handles
  - 3** Two heavy duty roller blade rear wheels
  - 4** Removable padded shoulder strap
  - 5** Wide mouth top opening - zip length 60cm
  - 6** Reinforced solid base with runners
  - 7** One external end pocket with zip closure
  - 8** Front mounted grab/pull handle
- Two separate waterproof internal compartments
  - External access to concealed boot compartment
  - Ventilation holes
  - All metal components

- Easy cleaning both inside and out
- Colours Available: Blue / Red
- Printing available at an additional cost
- Dimensions: (L) 70cm x (W) 40cm x (H) 50cm
- 120mm x 150mm clear window for names



RED NYLON



BLUE NYLON

## PRODUCT SPECIFICATIONS

|              |                                       |
|--------------|---------------------------------------|
| Product Code | BAG5817                               |
| Options      | BAG5817 BL - Blue<br>BAG5817 RD - Red |

*^ Please specify options when ordering*

## PAC FIRE'S "WHEELIE BIG" STOW BAG

A convenient, durable bag for storage and transportation of structural PPE, including structural fire helmet, clothing, boots, personal belongings and more.





## MEDIUM GEAR STOW BAG

The medium gear stow bag is a great storage and transportation solution for firefighters and emergency services personnel. Manufactured with two compartments, the medium stow bag allows for separate storage of PPE and personal items.

- Heavy duty rip stop, water resistant nylon outer
- Webbing carry handles
- All metal components
- Two separate waterproof internal compartments
- External access to concealed boot compartment
- One external end pocket with zip closure
- Wide mouth top opening - zip length 55cm
- Removable padded shoulder strap
- Easy cleaning both inside and out
- Colours Available: Blue / Red
- Printing available at an additional cost
- Dimensions: (L) 57cm x (W) 30cm x (H) 40cm
- 120mm x 150mm clear window for names



RED NYLON



BLUE NYLON

### PRODUCT SPECIFICATIONS

|              |                                       |
|--------------|---------------------------------------|
| Product Code | BAG5816                               |
| Options      | BAG5816 BL - Blue<br>BAG5816 RD - Red |



## RESCUE BUDGIE BAGS

Rescue budgie bags are lightweight and robust - perfect for emergency services personnel. The budgie bag has four convenient internal pockets so PPE and personal items can be stored separately.

- Heavy duty rip stop, water resistant nylon outer
- 4 separate internal compartments
- 2 external water bottle carriers
- Two-way metal zips
- External mesh pockets
- Internal Hydration bladder compartment
- Chest Strap
- External reflective stripes
- Padded shoulder strap, carry handle and backpack straps
- Colours Available: Blue / Red
- Printing available at an additional cost
- Dimensions: (L) 28cm x (W) 50cm x (H) 25cm



RED NYLON



BLUE NYLON

### PRODUCT SPECIFICATIONS

|              |                                       |
|--------------|---------------------------------------|
| Product Code | BAG2388                               |
| Options      | BAG2388 BL - Blue<br>BAG2388 RD - Red |

^ Please specify options when ordering





BAG5814  
SMALL BAG



## HELMET BAG

Securely store and protect your helmet with one of Pac Fire's padded helmet bags. Available in small for rescue and wildland firefighting helmets and medium for structural fire helmets

- Heavy duty polyester
- Padded lining
- Comfortable carry/hanging handle
- Available in Medium (for structural fire helmets) and Small (for wildland fire and rescue helmets)

## HELMET MESH SLING BAG

The helmet sling bag is a convenient and inexpensive way to store and carry your helmet.

- Made from knitted, brushed polyester
- Drawstring closure
- Shoulder strap
- Fits structural fire, wildland fire and rescue helmets

### PRODUCT SPECIFICATIONS

|              |  |
|--------------|--|
| Product Code | BAG5814 - Small: Wildland fire and rescue helmets<br>BAG5813 - Medium: Structural fire helmets |
|--------------|--|

### PRODUCT SPECIFICATIONS

|              |         |
|--------------|---------|
| Product Code | A115210 |
|--------------|---------|

DOT-01  
ALL-ROUND



## DOT SYSTEMS STORAGE DEVICES

The DOT system incorporates storage devices for contaminated protective clothing and equipment. DOT Bags are encapsulation systems developed for fire and rescue personnel - reducing exposure from contaminated PPE during handling and transport.

DOT bags are easy to work with, safe and specially adapted for fire and rescue vehicles.

- Available in two styles: DOT-01 All Round and DOT-02 Equipment
- For the safe storage and transportation of contaminated PPE
- Made from Polyester reinforced with polyvinyl chloride
- Can be cleaned and reused
- Compact shape for easy transport or storage
- DOT-02 features a handy contamination indicator on the handle which can display green for clean or red for soiled

### PRODUCT SPECIFICATIONS

|              |  |
|--------------|--|
| Product Code | DOT-01 - DOT All Round & Protective Clothing<br>DOT-02 - DOT Equipment |
| Application  | Structural Firefighting  |

^ Please specify options when ordering

NEW



## STRUCTURAL FIREFIGHTING ENSEMBLE TRANSPORTATION BAG

A compact, durable transportation bag ideal for transporting soiled structural gear, flash hood and gloves between incident and station laundry.

- Made from E/P PVC 0.55mm 660D
- Dual sliding zips
- Two large carry handles on gusset
- 450mm wide x 420mm high with a 150mm gusset (large enough for structural firefighting jacket and trousers)
- Two clear, name windows 210mm x 150mm (internal access) 170mm x 210mm (framed with external access)

### PRODUCT SPECIFICATIONS

|              |        |
|--------------|--------|
| Product Code | BAGPPC |
|--------------|--------|

NEW



## MESH LAUNDRY BAG

Laundry your small items of PPE in this convenient mesh bag. Designed to prevent PPE/C from becoming tangled while maintaining items in good form while washing in machine.

- Heavy duty polyester mesh
- Dyed in black - Colourfast
- Suitable for repeated laundry in washing machine
- Drawstring cord on the opened end; sealed on the opposite end
- Toggle lock with rust-proof spring on the inside
- 450mm x 250mm

### PRODUCT SPECIFICATIONS

|              |         |
|--------------|---------|
| Product Code | BAGMESH |
|--------------|---------|

# BAGS & STORAGE OPTIONS

RAKRFSS-3/20+  
SINGLE SIDED - 3 BAYS



RAKSEC-20+  
SECURITY KIT - SINGLE  
BAY (OPTIONAL)

RAKRRWM-3/20+  
WALL MOUNTED - 3 BAYS



## RED RACK™ FREESTANDING

Heavy duty Red Rack™ Freestanding compartments can be customised around a stations existing floorplan and expanded to meet growing personnel needs.

- Made from heavy-duty, tubular steel with a red powder coated finish
- Available in single or double sided bays
- Compartments are 50cm wide
- Security kit for single sided (lockable door, top and rear panel - RAKSEC-20+) and double sided (lockable door, top and rear panel RAKDSSEC-20+) available

### EACH COMPARTMENT INCLUDES

- |   |                               |   |                                     |
|---|-------------------------------|---|-------------------------------------|
| 2 | Apparel hooks per locker unit | 1 | Hanging pole the length of the unit |
| 1 | Adjustable helmet shelf       | 1 | Name plate per locker unit          |
| 1 | Adjustable boot shelf         |   |                                     |

## RED RACK™ WALL MOUNTED

Get organised with the wall mounted modules from Ready Rack. They are fast and easy to install with handy directions included with every module.

- Made from heavy-duty, tubular steel with a red powder coated finish
- Compartments are 50cm wide
- Easy to install
- Security kit (including lockable door, top and rear panels) available (RAKSEC-20+)

### EACH COMPARTMENT INCLUDES

- |   |                          |   |                                     |
|---|--------------------------|---|-------------------------------------|
| 2 | Apparel hooks per locker | 1 | Hanging pole the length of the unit |
| 1 | Adjustable helmet shelf  | 1 | Name plate per locker unit          |
| 1 | Adjustable boot shelf    |   |                                     |

### PRODUCT SPECIFICATIONS

| Product Code | RAKRFSS - SINGLE SIDED   | RAKRFDS - DOUBLE SIDED                           |
|--------------|--|--|
| Options      | RAKRFSS-2/20+ - 2 bays<br>RAKRFSS-3/20+ - 3 bays<br>RAKRFSS-5/20+ - 5 bays<br>RAKRFSS-6/20+ - 6 bays<br>RAKRFSS-10/20+ - 10 bays<br>RAKRFSS-15/20+ - 15 bays | RAKRFDS-4/20+ - 4 bays<br>RAKRFDS-6/20+ - 6 bays |

### PRODUCT SPECIFICATIONS

| Product Code | RAKRRWM - WALL MOUNTED  |  |
|--------------|---|--|
| Options      | RAKRRWM-1/20+ - 1 bay<br>RAKRRWM-2/20+ - 2 bays<br>RAKRRWM-3/20+ - 3 bays<br>RAKRRWM-4/20+ - 4 bays<br>RAKRRWM-5/20+ - 5 bays<br>RAKRRWM-6/20+ - 6 bays<br>RAKRRWM-7/20+ - 7 bays<br>RAKRRWM-8/20+ - 8 bays | RAKRRWM-9/20+ - 9 bays<br>RAKRRWM-10/20+ - 10 bays<br>RAKRRWM-11/20+ - 11 bays<br>RAKRRWM-12/20+ - 12 bays<br>RAKRRWM-13/20+ - 13 bays<br>RAKRRWM-14/20+ - 14 bays<br>RAKRRWM-15/20+ - 15 bays |

^ Please specify options when ordering



# BAGS & STORAGE OPTIONS



RAKMSS-3/20+  
SINGLE SIDED - 3 BAYS

## EACH COMPARTMENT INCLUDES

- 2 Apparel hooks per locker unit
- 1 Adjustable helmet shelf
- 1 Adjustable boot shelf
- 1 Hanging pole the length of the unit
- 1 Name plate per locker unit

## SINGLE SIDED SECURITY KIT (OPTIONAL)

- 1 Top security shelf
- 1 Rear security panel
- 1 Lockable door

## DOUBLE SIDED SECURITY KIT (OPTIONAL)

- 1 Top security shelf
- 1 Lockable door

## RED RACK™ MOBILE

Groves Incorporated, creators of Red Rack have been leaders in storage for over 30 years. Heavy duty Red Rack™ Mobile compartments are the perfect solution to meet a stations growing personnel needs.

- Made from heavy-duty, tubular steel with a red powder coated finish
- Includes 4 durable, swivel casters
- Available in single or double sided bays
- Compartments are 50cm wide
- Security kit (including door and top) for single sided (RAKSEC-20+) and double sided (RAKDSSEC-20+) available
- Fast and easy to assemble with detailed instructions included with every module

| PRODUCT SPECIFICATIONS |  |  |
|------------------------|--|--|
| Product Code           | RAKMSS SINGLE SIDED  | RAKMDS DOUBLE SIDED  |
| Options                | RAKMSS-2/20+<br>2 single sided bays<br>RAKMSS-3/20+<br>3 single sided bays | RAKMDS 4/20+<br>4 single sided bays<br>RAKMDS 6/20+<br>6 single sided bays |
| Extras                 | RAKSEC-20+<br>SINGLE SIDED<br>SECURITY KIT                                 | RAKDSSEC-20+<br>DOUBLE SIDED<br>SECURITY KIT                               |

^ Please specify options when ordering



RAKHC-64-2T  
2 TIER MOBILE  
HOSE CART

## RED RACK™ DRY & STORE HOSE RACK

Dry and store your hose on the same unit! The Red Rack Dry and Store Hose Rack is a great solution for smaller stations.

- Top mounted drying rack and lower level storage rack
- Dries up to 270m of 38-44mm hose or 180m of 63-76mm hose
- Store up to 195m of 63mm hose
- Made from heavy duty steel with red powder coat finish
- Includes 4 durable, 125mm swivel casters
- Made in the USA

## RED RACK™ MOBILE HOSE CART

Keep hose organised with the mobile hose cart from Ready Rack. This hose cart is mounted on durable swivel casters meaning you can reposition your hoses quickly and easily.

- Keep hose organised and in easy reach
- Cut down on the fatigue related to moving hose manually
- Huge 2000kg capacity
- Supports 250m hose coils
- Made from heavy duty steel with red powder coat finish
- Includes 4 durable, 125mm swivel casters
- 2 & 3 tier options available
- Made in the USA

### PRODUCT SPECIFICATIONS

|              |           |
|--------------|-----------|
| Product Code | RAKMHD-80 |
|--------------|-----------|

### PRODUCT SPECIFICATIONS

|              |                         |                           |
|--------------|-------------------------|---------------------------|
| Product Code | TWO TIER<br>RAKHC-64-2T | THREE TIER<br>RAKHC-64-3T |
|--------------|-------------------------|---------------------------|

<sup>^</sup> Please specify options when ordering  
\* Lead time & additional freight charges apply



# MEDICAL BAGS



## RESCUE SWAG FEATURES

- Includes a comprehensive range of medical supplies
- Modules link directly to instructions and photographs via QR code or through the app
- Each kit can be used as a sling, splint, immobilisation device and water carrier
- Easy access external pocket
- Rescue Swag includes major accidents module, minor accidents module and snake bite & burn module

### MAJOR ACCIDENTS MODULE

|   |   |   |  |
|---|---|---|--|
| 1 | AERO First Aid Leaflet                  | 2 | AEROGLOVE Nitrile Glove Powder Free    |
| 3 | AEROPLAST Amputated Parts Bags Ass.     | 1 | AEROBAND N/W Tri. Band. 110cm x 110cm  |
| 1 | AEROPLAST Thermal Blanket 127cm x 180cm | 1 | AEROWOUND Wound Dressing No.14         |
| 1 | AEROPINS Safety Pins Bag of 12          | 1 | AEROWOUND Wound Dressing No.15         |
| 1 | AEROSHIELD Face Shield Disp.            | 1 | AEROWOUND Combine Dressing 10cm x 20cm |
| 1 | First Aid Notebook with Pen             | 1 | AEROWOUND Combine Dressing 20cm x 20cm |
| 1 | Scissors Sharp/Blunt 13cm S/S           | 1 | Instruction Card                       |

### MINOR ACCIDENTS MODULE

|   |   |    |                                    |
|---|---|----|------------------------------------|
| 1 | AEROPLAST Instant Ice Pack 80g          | 2  | AEROWIPE Cleansing Wipes           |
| 1 | AEROPAD Low Ad. Dressing 7.5cm x 10cm   | 5  | AEROPROBE Splinter Probes 3.7cm    |
| 1 | AEROPAD Low Ad. Dressing 5cm x 5cm      | 1  | Forceps 13cm Stainless Steel       |
| 2 | AEROSWAB Gauze Swabs 3pcs 7.5cm x 7.5cm | 25 | AEROPLAST Fabric Strip 72mm x 19mm |

### PRODUCT SPECIFICATIONS

|              |        |
|--------------|--------|
| Product Code | RS1120 |
|--------------|--------|

### ALSO AVAILABLE WORKPLACE RESCUE SWAG

The Workplace Rescue swag is the first first-aid solution developed specially for the workplace. It's been adapted to meet the Safe Work Australia First Aid in the Workplace Code of Practice requirements, to Outdoor and Remote Level.

#### PRODUCT SPECIFICATIONS

|              |        |
|--------------|--------|
| Product Code | RS1123 |
|--------------|--------|

|   |  |   |                                       |
|---|--|---|---------------------------------------|
| 1 | AEROFORM Conforming Band. 10cm x 1.5m    | 5 | AEROWASH Eye Wash Liquid Ampoule 15ml |
| 2 | AEROPAD Eye Pads 5.5cm x 7.7cm           | 1 | Eye Bath Plastic Blue                 |
| 1 | AEROAID Antiseptic Tube 25g              | 1 | Instruction Card                      |
| 1 | AEROPORE Micro. Paper Tape 1.25cm x 5m   | 1 | Red Aluminium Torch Whistle           |
| 6 | AEROWIPE Povidone Iodine Swabs 60 x 33mm |   |                                       |

### SNAKE BITE & BURNS MODULE

|   |  |   |                                       |
|---|--|---|---------------------------------------|
| 1 | AEROFORM Con. H/Weight Band. 15cm x 1.5m | 1 | AEROPAD Low Ad. Dressing 7.5cm x 10cm |
| 1 | AEROFORM Con. H/Weight Band. 10cm x 1.5m | 1 | AEROBURN Burn Dressing 10 x 10cm      |
| 1 | AEROCREPE Elas. Crepe Band. 10cm x 1.5m  | 3 | AEROBURN Burn Gel Sachet 3.5g         |
| 1 | AEROBURN PE Burn Sheet 60cm x 90cm       | 1 | 1 Large Clear Plastic Water Liner     |
| 1 | AEROPAD Low Ad. Dressing 10cm x 10cm     | 1 | Instruction Card                      |





## MOBILE FIRST AID SOLUTION

Rescue Swag was developed to keep you safe during life's adventures, wherever you are, whatever you do.

Originally featured on entrepreneurial cult television show, "The Shark Tank", the Rescue Swag was developed after creator Tracey Beikoff came off her horse and identified the need for a mobile first aid solution that was more than just bandaids and gauze.

M5101TB  
OMNI™ PRO  
MAIN BAG



M5101A  
AIRWAY INTUBATION  
TRI FOLD MODULE



M5101J  
MEDKIT MEDICATIONS  
MODULE



M5101C  
XTRA FILL PACK  
MODULE

## OMNI™ PRO SYSTEM

OMNI™ PRO is a professional solution, built to help you rapidly and proficiently deploy medical care during critical moments and save lives. Built from the strongest materials and a smart design, and the versatility to modify to your requirements, the OMNI PRO™ delivers a customisable and organised option for the storage and transportation of your equipment

- Organise the main compartment of the OMNI™ PRO with the slider system
- Overlapping panels secure internal contents
- Grommet holes allows all compartments to be air dried while the bag is completely closed
- Designed for use as a backpack, shoulder bag, can be carried briefcase style, or can be grabbed from any position using a system of light weight comfort-grip side handles
- Features fully padded lumbar support
- Oversized YKK zippers
- PVC lined back and bottom resists water and wear
- Customise the OMNI™ PRO Bag with the airway intubation module, Xtra Fill module and MEDKIT medications module
- OMNI™ PRO is compatible with TS2 Ready™ modules

### PRODUCT SPECIFICATIONS

| PRODUCT SPECIFICATIONS       |  |
|------------------------------|--|
| Product Code                 | M5101  |
| Options                      | M5101HV<br>HiVis Infection Control Material<br>M5101F<br>Red Infection Control Material<br>M5101TB<br>Tactical Black Infection Control Material  |
| Modules<br>(sold separately) | M5101A<br>Airway Intubation Tri Fold Module - Infection Control Material<br>M5101C<br>XTRA Fill Pack Module - Infection Control Material<br>M5101J<br>MEDKIT Medications Module - Infection Control Material |

^ Please specify options when ordering  
\* Some options may attract additional lead time

M5108TB  
RECOVER PRO  
MAIN BAG



M5101C  
XTRA FILL PACK  
MODULE



M5101C  
INSIDE VIEW



## RECOVER PRO SYSTEM

Recover Pro allows professionals to rapidly deploy emergency oxygen during critical moments. Built from the durable material and components, this smart design, Recover Pro delivers a customisable approach to the storage and transportation of oxygen delivery systems.

- Using Recover Pro's EZ-Grab pull bars, the two main panels of the bag quickly opens to reveal the oxygen cylinder
- Internal dual full length mesh pockets accommodate masks and tubing
- Dual outer zippered pockets offer additional storage for smaller items.
- Detachable buckled loops allow you to attach the Recover Pro to the side of an ambulance cot for patient transport
- Grommet holes allows all compartments to be air dried while the bag is completely closed
- Adjustable sternum and waist belt, lumbar support
- Oversized YKK zippers
- PVC lined back and bottom resists water and wear
- Customise the Recover Pro Bag Xtra Fill module
- Recover Pro is compatible with TS2 Ready™ modules

### PRODUCT SPECIFICATIONS

|                              |  |
|------------------------------|--|
| Product Code                 | M5108TB  |
| Options                      | M5108FN-HV<br>HiVis Infection Control Material<br>M5108FN<br>Red Infection Control Material<br>M5108TBN<br>Tactical Black Infection Control Material |
| Modules<br>(sold separately) | M5101C<br>XTRA Fill Pack Module - Infection Control Material   |

^ Please specify options when ordering  
\* Some options may attract additional lead time

M5107  
MULE PRO  
MAIN BAG



M5101C  
XTRA FILL PACK  
MODULE



M5101J  
MEDIKIT  
MEDICATIONS  
MODULE



M5101A  
AIRWAY INTUBATION  
TRI FOLD MODULE



M5101L  
X2 DOUBLE FILL PRO  
*\*equipment not included  
with module*



## M.U.L.E PRO SYSTEM

M.U.L.E PRO is for the professional who wants it all. It's a field tested roller bag, a harness style backpack and can be carried as a briefcase. M.U.L.E PRO is constructed from the strongest materials and components. The smart design allows the bag to be completely customised to meet an individuals personal preference and expanded by up to 50% with the addition of optional modules.

- Inner foam construction maintains shape and protects contents
- COMFORT-GRIP carry handles with reflective logos on sides of the bag
- Hideaway adjustable, padded, contoured yoke backpack strap harness system easily distributes weight for maximum comfort
- Customisable internal main compartment using SLIDERS™ System
- Three external zippered pockets for quick access
- Adjustable sternum and waist belt, lumbar support
- Oversized YKK zippers
- PVC lined back and bottom resists water and wear
- Customise the Recover Pro Bag Xtra Fill module
- All compartments have air dry capability

### PRODUCT SPECIFICATIONS

|                                     |   |
|-------------------------------------|---|
| Product Code                        | M5107 - Tactical Black Infection Control Material   |
| Modules<br><i>(sold separately)</i> | M5101A<br>Airway Intubation Tri Fold Module - Infection Control Material<br>M5101C<br>XTRA Fill Pack Module - Infection Control Material<br>M5101J<br>MEDIKIT Medications Module - Infection Control Material<br>M5101L<br>X2 Double Fill Pro<br>M5107-PC<br>PC Mule Protective Travel Sleeve |

^ Please specify options when ordering  
\* Some options may attract additional lead time



# TOOLS & ACCESSORIES



## ORIGINAL QUICK FIST® CLAMP

Quick Fist® Original mounts easily to keep shovels, axes, hoses and other tools securely in place.

- Made from UV resistant, heavy duty, transportation grade rubber
- Each clamp supports a safe working load of 11kg
- Holds objects 25mm to 57mm in diameter
- Mounts easily with 1 x #10 bolt or screw
- Mounting area 64mm x 19mm
- Secure storage solution for emergency vehicles, work trucks, military, all terrain vehicles and boats

### PRODUCT SPECIFICATIONS

|              |         |
|--------------|---------|
| Product Code | QF10012 |
|--------------|---------|



## SUPER QUICK FIST® CLAMP

The Super Quick Fist® is an ideal storage solution for air tanks, fire extinguishers, nitrous oxide tanks, scuba tanks and more.

- Made from UV resistant, heavy duty, transportation grade rubber
- Each clamp supports a safe working load of 23kg
- Holds objects 64mm to 240mm in diameter
- Mounts easily with 3 x #10 bolts or screws
- Mounting area 152mm x 22mm

### PRODUCT SPECIFICATIONS

|              |         |
|--------------|---------|
| Product Code | QF20023 |
|--------------|---------|



## MINI QUICK FIST® CLAMP

Quick Fist® Mini is great for mounting fishing rods, wire bundles, small flashlights, hand tools, brooms, and poles. Can also be used to mount objects to a pipe or round tubing

- Made from UV resistant, heavy duty, transportation grade rubber
- Each clamp supports a safe working load of 11kg
- Holds objects 16mm - 32mm in diameter
- Mounts easily with 1 x #10 bolt or industrial adhesive
- Mounting area 38mm x 38mm.

### PRODUCT SPECIFICATIONS

|              |         |
|--------------|---------|
| Product Code | QF30055 |
|--------------|---------|



## QUICK FIST® XL CLAMP

Quick Fist® XL is the largest clamp in the range - two straps hold objects with a diameter of 381mm and supports 68kg.

- Made from UV resistant, heavy duty, transportation grade rubber
- Quick Fist® XL clamps are a pair of straps which support a safe working load of 68kg with a break strength of 136kgs
- Holds objects up to 381mm in diameter
- Each strap mounts easily with 4 x #10 bolts or screws.
- Mounting area 51mm x 51mm.

### PRODUCT SPECIFICATIONS

|              |         |
|--------------|---------|
| Product Code | QF60023 |
|--------------|---------|

## GO BETWEEN QUICK FIST® CLAMP



Go Between Quick Fist® has been designed to hold tools and equipment with a diameter between 44mm to 73mm.

- Made from UV resistant, heavy duty, transportation grade rubber
- Each clamp supports a safe working load of 23kg
- Holds objects 44mm to 73mm in diameter
- Mounts easily with 2 x 6mm bolts or screws
- Mounting area 25mm x 89mm.
- Ideal for securing items like 50mm pike pole, battering rams, nozzles, pipe, struts and more

## NOZZLE QUICK FIST® CLAMP



The Nozzle Quick Fist® holds objects with a diameter of 70mm - 83mm with a safe working load of 23kgs.

- Made from UV resistant, heavy duty, transportation grade rubber
- Each clamp supports a safe working load of 23kg
- Holds objects 70mm - 83mm in diameter
- Mounts easily with 1 x #10 bolt or screw
- Mounting area 113mm x 32mm.

### PRODUCT SPECIFICATIONS

|              |         |
|--------------|---------|
| Product Code | QF80023 |
|--------------|---------|

### PRODUCT SPECIFICATIONS

|              |         |
|--------------|---------|
| Product Code | QF50052 |
|--------------|---------|



## QUICK FIST® LONG ARM CLAMP

Quick Fist® Long Arm is a solution for tools with handles or equipment that coils - like hoses, cords or rope.

- Made from UV resistant, heavy duty, transportation grade rubber
- Each clamp supports a safe working load of 23kg
- Holds objects 13mm - 114mm in diameter
- Mounts with 2 x 6mm bolts or #14 wood or sheet metal screws, plus washers

### PRODUCT SPECIFICATIONS

|              |         |
|--------------|---------|
| Product Code | QF40023 |
|--------------|---------|



## FIXED WAND FIRE DRIP TORCH

The Surefire Fixed Wand Fire Lighter is an excellent tool for burning out and fire line ignition.

The Surefire has a wand manufactured from 12mm stainless steel tube and a fibreglass filled wick covered with galvanised perforated steel sheeting.

Due to the Surefire being fitted with an anti-flash loop and non-return valves, its safety is second to none.

- Runs on 25% Petrol (Gasoline) and 75% Diesel
- 4.5 Litre Capacity
- 12mm stainless steel tube and a fibreglass filled wick covered with galvanised perforated steel sheeting
- Shamrock green in line with AFAC approved colouring for fuel storage containers

### PRODUCT SPECIFICATIONS

|               |                       |
|---------------|-----------------------|
| Product Code  | BCRPFL FW G           |
| Application   | Wildland Firefighting |
| Certification | AS/NZS 2906           |



## GENFO FIREFIGHTING BACKPACK

GENFO is a collapsible bushfire knapsack designed to assist firefighters approaching wildland fires

- Holds up to 18 litres of water
- Thermally welded flexible tank manufactured in canvas reinforced with synthetic fabric
- Ideal for mop-up, control and extinguishing tasks for forest fires
- Measures 490 x 650mm
- Adjustable Nozzle (Jet / Fog)
- Reach: Jet: > 8m / Fog: > 3m
- Pistol grip trigger
- Flow: 120cc/stroke
- Inlet: 100mm Diameter
- Carry via central handle and back straps

### PRODUCT SPECIFICATIONS

|              |                       |
|--------------|-----------------------|
| Product Code | I200549               |
| Application  | Wildland Firefighting |



## GENERAL DUTY RESCUE DUMMY

The General Duty dummies are ideally suited for almost any land rescue situation. They have anatomically correct weight distribution and the uncanny 'feel' of an unconscious patient.

The General Duty dummy can be used in more extreme rescue scenarios such as hazmat, foul drain, sewer or other toxic situations.



- Body constructed from heavy duty polyester with all seams double stitched. High density polypropylene webbing provides extra strength and durability
- Protective overalls keep the dummy clean, and greatly increases the lifespan. The overalls are made of tough polyester material  
Dummies 20kg and over are supplied complete with gum boots
- Anatomically correct weight distribution to give the 'feel' of an unconscious casualty
- The shaped head allows the fitting of all types of immobilisation collars.
- General Duty dummies can safely be used in scenarios with temperatures up to 100°C.
- Ideal for wet or dry rescue conditions
- Easy clean - hose down and hang dry
- Made in Britain

### PRODUCT SPECIFICATIONS

| Product Code | LTRLN                                    |
|--------------|--|
| Options      | LTRLN5 - BABY: 70cm (height) x 5kgs      |
|              | LTRLN10 - TODDLER: 90cm (height) x 10kgs |
|              | LTRLN20 - YOUTH: 130cm (height) x 20kgs  |
|              | LTRLN20A - ADULT 180cm (height) x 20kgs  |
|              | LTRLN30 - ADULT: 180cm (height) x 30kgs  |
|              | LTRLN50 - ADULT: 180cm (height) x 50kgs  |
|              | LTRLN70 - ADULT: 180cm (height) x 70kgs  |

<sup>^</sup> Please specify options when ordering  
\* Lead time & additional freight charges apply

General Duty dummies should not be exposed to excessive temperatures (over 100°C) or naked flame. Not suitable for submersion in water. Please ask about other ranges of LifeTec manikins available for your specific application.



## FIRE HOUSE RESCUE DUMMY

LifeTec manikins are designed to represent the correct anatomic weight distribution of a real person.

The fire house rescue dummy is available in several different options to mimic a real life situation and will withstand temperatures of around 160°C at floor level.

- Body constructed from the same flame retardant Polyester reinforced with 38mm Nomex® webbing
  - Protective overalls are non-flammable; constructed from a special Nomex® blend material and reinforced with Nomex® webbing to improve abrasion resistance
- Fitted with 20mm Kevlar® ties, as standard Velcro fastenings melt at high temperature
- Anatomically correct weight distribution to give the 'feel' of an unconscious casualty.
  - Tough enough to withstand being buried under concrete or steel lintels
  - Soft body joints eliminate the risk of pinch welts and bruising; common injuries when using plastic bodied manikins.
  - An immobilisation/extrication collar can be fitted around the neck of our adult manikins to promote proper casualty care.
  - Supplied with overalls, boots and separate Nomex® hood to cover the head, which are easily replaced if damaged.
  - Made in Britain

| PRODUCT SPECIFICATIONS |  |
|------------------------|--|
| Product Code           | LTRLFH   |
| Options                | LTRLFH5 - BABY: 70cm (height) x 5kgs<br>LTRLFH10 - TODDLER: 90cm (height) x 10kgs<br>LTRLFH20 - YOUTH: 130cm (height) x 20kgs    |
|                        | LTRLFH30 - ADULT: 180cm (height) x 30kgs<br>LTRLFH50 - ADULT: 180cm (height) x 50kgs<br>LTRLFH70 - ADULT: 180cm (height) x 70kgs |

^ Please specify options when ordering  
\* Lead time & additional freight charges apply

Fire House dummies should not be exposed to excessive temperatures or naked flame. Not suitable for submersion in water. Please ask about other ranges of LifeTec manikins available for your specific application.



## AC HOT STICK

The AC Hot Stick is a safety device designed for professional rescuers which provides warning of exposed high voltage AC from a safe distance. Hot Stick will give early audible and visual warning signalling dangerous voltages without the need to contact the surface carrying the current.

- Provides early warning that high voltage AC is nearby
- Safe and simple to use
- Exceptionally sensitive
- Warnings delivered by beeping and flashing LED's (audio and visual)  
Warning signals speed up when approaching the hazard
- Affordable and reliable
- Compact and portable
- Powered by 4 x AA alkaline batteries
- A great resource for search & rescue, fire, vehicular extrication, confined space rescue, Hazmat, disaster operations, power restoration, industrial work, trench rescue and law enforcement



### PRODUCT SPECIFICATIONS

Product Code

HSBN900502



PRO1161  
DIESEL - 10L

PRO1163  
DRIP TORCH - 10L

PRO1162  
25:1 TWO STROKE - 10L

PRO1160  
ETHANOL - 10L

PRO1096  
UNLEADED - 10L

## JERRY CANS

Pac Fire's metal jerry cans are AFAC approved and available in a range of sizes and options. Each Jerry Can is supplied with a matching plastic tag.

- Available in 5, 10 & 20 litre capacities
- Tough, durable and corrosion resistant
- Passes all drop tests and will not leak under pressure
- No loss of integrity under Standards flame tests
- Supplied with matching plastic tag (also available separately)
- World patented locking-pin
- Meets Defence Force Specifications (BAM)
- AFAC approved colours

### PRODUCT SPECIFICATIONS

|               |                  |
|---------------|------------------|
| Certification | AS/NZS 2906:2001 |
|---------------|------------------|

^ Please specify options when ordering

### APPROVED ACCESSORIES

|   |          |
|---|----------|
| Jerry Can Holder (for 10L Jerry Cans)           | PRO0974  |
| Lockable Jerry Can Holder (for 20L Jerry Cans)  | PRO0980  |
| Jerry Can Pourer                                | PRO0993C |
| Jerry Can Pourer Clip (for 5L Jerry Cans)       | PRO0990C |
| Jerry Can Pourer Clip (for 10 & 20L Jerry Cans) | PRO0991C |
| Flexible Jerry Can Pourer (Unleaded)            | PRO13300 |
| Flexible Jerry Can Pourer (Diesel)              | PRO23300 |
| SUPER CAN Flexible Jerry Can Pourer (Unleaded)  | PRO13355 |
| SUPER CAN Flexible Jerry Can Pourer (Diesel)    | PRO23355 |
| Jerry Can Replacement Rubber Seal (3 pack)      | PRO0995C |
| Jerry Can Tag - Clear (ea)                      | PRO1048  |

# TOOLS & ACCESSORIES



| PRODUCT OPTIONS                 | 5L<br>JERRY CAN | 10L<br>JERRY CAN | 20L<br>JERRY CAN |
|---------------------------------|-----------------|------------------|------------------|
| Unleaded - Red                  | PRO1095         | PRO1096          | PRO1097          |
| Ethanol - Orange                | -               | PRO1160          | PRO1150          |
| Diesel - Olive Yellow           | PRO1172         | PRO1161          | PRO1151          |
| 25:1 Two Stroke - Bottle Green  | PRO1173         | PRO1162          | PRO1152          |
| Drip Torch - Shamrock Green     | PRO1174         | PRO1163          | PRO1153          |
| Chain & Bar Oil - Bright Blue   | PRO1176         | PRO1165          | PRO1155          |
| Kerosene - Powder Blue          | PRO1177         | PRO1166          | PRO1156          |
| 50:1 Two Stroke - Pipeline Grey | PRO1179         | PRO1167          | PRO1157          |
| Oil - Black                     | PRO1180         | PRO1168          | PRO1158          |
| Deto-Stop - Green               | PRO0967         | PRO0966          | PRO0965          |
| Deto-Stop - Red                 | PRO094-1        | PRO0973          | PRO0972          |

| SINGLE<br>TAG | 5 PACK<br>TAG | METAL<br>TAG |
|---------------|---------------|--------------|
| PRO1040       | PRO1040+      | PRO1040M     |
| PRO1051       | -             | -            |
| PRO1041       | PRO1041+      | PRO1041M     |
| PRO1042       | PRO1042+      | PRO1042M     |
| PRO1044       | PRO1044+      | PRO1044M     |
| PRO1045       | PRO1045+      | PRO1045M     |
| PRO1050       | -             | -            |
| PRO1043       | PRO1043+      | PRO1043M     |
| PRO1046       | PRO1046+      | PRO1046M     |



## MINIMALIST CONDITION MONITORING

The Kestrel 3000 pocket weather meter gives you real conditions in real time.

This highly portable and reliable device has become an important tool in wildland firefighting.

The Kestrel 3000 takes a minimalist approach to gathering vital weather and environmental data. It has become common accessory for fire departments in their field calibration kit.



## WEATHER METER FEATURES

- Large, easy to read display
- 3-Button Control
- Data Hold Function
- Kestrel 3000 measures temperature, barometric pressure, relative humidity, heat stress index, dewpoint, wind chill, current wind speed, average wind speed and maximum wind gust
- The unit is waterproof and floats
- Temperature Sensor (Patented External Isolated)
- Includes lanyard and slip-on protector
- Drop-Tested to MIL-STD-810G
- Assembled in the USA



WATERPROOF



IMPACT RESISTANT

### PRODUCT SPECIFICATIONS

|               |  |
|---------------|--|
| Product Code  | MK3000   |
| Certification | Ingress Protection IP67<br>NEMA-6<br>CE certified<br>RoHS and WEEE compliant |



## KESTREL 3500 WEATHER METER

The Kestrel 3500 weather meter is an easy to operate, feature rich device that is trusted by firefighters around the world. This model includes wetbulb and baro/alt measurements in addition to the features found in the popular 3000 model.

- Reliable, portable, and easy to use
- Kestrel 3500 measures barometric pressure, altitude, relative humidity, heat stress index, dewpoint, wet bulb temperature, wind chill, current wind speed, average wind speed and maximum wind gust
- Wide range of wind speeds and low startup speed
- High precision pressure sensor
- Data hold function
- Large, easy to read display
- The device is waterproof and floats
- Lanyard & slip on protector included

### PRODUCT SPECIFICATIONS

|               |  |
|---------------|--|
| Product Code  | MK3500   |
| Certification | Ingress Protection IP67<br>NEMA-6<br>CE certified<br>RoHS and WEEE compliant |



## KESTREL BELT CLIP CASE

The belt clip case fits and protects any of the Kestrel Meters.

- Made from sturdy, padded, triple laminate of polyurethane, vinyl and nylon
- Neoprene rubber inside to hold the Kestrel weather meters snugly
- Rugged clip works with up to a 56mm wide belt
- Hook/loop closure
- Designed with a battery holder and front pocket

### PRODUCT SPECIFICATIONS

|              |        |
|--------------|--------|
| Product Code | MK0805 |
|--------------|--------|





## HOSE RAMP

Protect your hose from vehicle damage with this heavy duty hose ramp. Pac Ramp supports hose up to 70mm in diameter.

- Heavy duty reinforced rubber construction
- Can be joined together for extra width with bone connectors
- Four silver reflective stripes for visibility
- For hose up to 70mm in diameter
- Dimensions: 609mm x 384mm x 90mm
- Weighs 13.5kgs



Find a selection of Pac Fire's hoses and fittings on page 80

### PRODUCT SPECIFICATIONS

|              |            |
|--------------|------------|
| Product Code | PAC RAMP75 |
|--------------|------------|



M22-000600  
HOOLIGAN TOOL  
WITH STANDARD  
CLAW



M22-000622  
HOOLIGAN TOOL  
WITH METAL  
CUTTING CLAW

## HOOLIGAN TOOLS

Hooligan (halligan type) tools are traditionally used in forcible entry situations. These heavy-duty tools were designed to pound, puncture, pry, twist, and cut all types of barriers encountered by emergency service personnel.

- Head and claw are forged from heat treated, high alloy steel
- Body is a stress proof bar
- The bar is machine grooved to create a non-slip grip
- The pike is long, sharp, tapered and gently curved to fit a lock or latch
- The duckbill is long with a smooth incline to force windows and doors
- 750mm total length
- Machine sharpened claws
- Claw opening is parallel and fits over locks, hasps and many door bars
- Available with standard or metal cutting claw end

### PRODUCT SPECIFICATIONS

|              |                                 |                                      |
|--------------|---------------------------------|--------------------------------------|
| Product Code | M22-000600<br>Standard claw end | M22-000622<br>Metal cutting claw end |
|--------------|---------------------------------|--------------------------------------|



## FIBREGLASS HD BAR

This tool is used mainly where forcible entry is required.

The non-conductive handle makes it a great solution for electrified or non-electrified situations.

- Head and claw are forged from heat treated, high alloy steel
- 750mm total length
- Claw opening is parallel and fits over locks, hasps and many door bars
- The pike is long, sharp, tapered and gently curved to fit a lock or latch
- The duckbill is long with a smooth incline to force windows and doors
- 750mm total length
- Machine sharpened claws
- Non-conductive fibreglass shaft
- No-slip celtex grips
- Ideal for Hybrid automobiles

### PRODUCT SPECIFICATIONS

|              |            |
|--------------|------------|
| Product Code | FHUHDNC-30 |
|--------------|------------|



## PULASKI FIRE AXE

The Pulaski Axe is a combination axe and mattock, ideal for chopping, digging fire lines in hard or soft soils.

- Combined axe and mattock
- Precision ground and tempered cutting edges
- Durable and lightweight fibreglass handle

### PRODUCT SPECIFICATIONS

|              |          |
|--------------|----------|
| Product Code | FHUPUL-5 |
|--------------|----------|

|             |                       |
|-------------|-----------------------|
| Application | Wildland Firefighting |
|-------------|-----------------------|



## STANDARD FIRE AXE

Pac Fire's standard fire axe can be used in all manner of firefighting applications including chopping, battering, door stop and more.

- Traditional axe head shape with pick end
- Precision ground and tempered cutting edges

Cutting edges coated with clear lacquer, body coated with red enamel

- Durable and lightweight fibreglass handle

### PRODUCT SPECIFICATIONS

|              |          |
|--------------|----------|
| Product Code | FHUFAP-6 |
|--------------|----------|

|             |                         |
|-------------|-------------------------|
| Application | Structural Firefighting |
|-------------|-------------------------|



## BLUE TANG® HYDRALLOY DROP POINT KNIFE

The Blue Tang® HYDRALLOY® knife is built rugged, with a serrated edge and a hooked end for cutting through all types of rope and line. It is the ultimate safety tool.

- Drop point HYDRALLOY® blade
- Stainless steel knife butt is insulated from blade to eliminate metal to metal corrosion
- Quick disassembly for cleaning
- Serrated edge for cutting rope and line
- Hooked edge line cutter
- 127mm hollow ground, double edge blade
- Knife sheath included

### PRODUCT SPECIFICATIONS

Product Code UKT530084



## VICTORINOX RESCUETOOL

Victorinox worked with rescue professional for years to refine the design of the Rescue-Tool pocket knife.

Each tool is optimised for left and right handed users. It's the knife we hope you never have to use - but when every second counts, you can count on the RescueTool.

- Large lock blade for one handed opening
- Storage pouch included
- Tool length: 133mm
- Total weight: 240g
- Luminescent body
- Rescue tool includes: Phillips screwdriver, window breaker, strong screwdriver, crate opener with cap lifter and wire stripper, seatbelt cutter, disc saw for shatterproof glass, Reamer / punch, tweezers and toothpick

### PRODUCT SPECIFICATIONS

Product Code MVIC-08623.MWN



## RESQME® CAR ESCAPE TOOL

ResQMe® is a keychain, car escape tool. This 2 in 1, safety and survival tool, allows you to cut a jammed seatbelt and break a side window in your car.

Originally developed for first responders ResQMe® has become an safety solution for all motorists.

- An affordable, portable and reliable car escape tool
- Made from heavy duty and durable ABS plastic and stainless steel components
- Breaks car side windows
- Cuts jammed safety belts
- Compact, lightweight & powerful
- Patented technology
- Made in the USA

### PRODUCT SPECIFICATIONS

Product Code ZYTX010YE



## SMALL TRAFFIC CONE

Traffic Cones are a great way to make a workplace, road or public area safe from dangers, hazards and lane closures.

- Robust PVC construction
- High visibility fluro body colour
- 150mm reflective collar made from Reflexite
- Rubber base measuring 26.5cm x 26.5cm with feet
- Weight: 1.4kg
- 450mm high



## LARGE TRAFFIC CONE

Pac Fire's large traffic cones are generally used on roads or footpaths to temporarily redirect traffic in a safe manner, can create separation or merge lanes during road construction projects or automobile accidents.

- Robust PVC construction
- High visibility fluro body colour
- 250mm reflective collar made from Reflexite
- Rubber base measuring 26.5cm x 26.5cm with feet
- Weight: 3.25kg
- 700mm high



## RUBBER WHEEL CHOCK

Wheel chocks are a must-have for any loading dock environment.

This moulded rubber wheel chock is sloped to increase holding capacity.

- Manufactured from moulded rubber
- Durable construction resists tearing, abrasion and weathering
- Meets OSHA requirements
- Includes rope strap
- Dimensions: 260mm x 160mm x 190mm
- Weight: 3.0kg

### PRODUCT SPECIFICATIONS

Product Code PAC DH-TC-45

Certification AS 1742

### PRODUCT SPECIFICATIONS

Product Code PAC DH-TC-70

Certification AS 1742

### PRODUCT SPECIFICATIONS

Product Code PAC DH-WC-1+



# CLEANING & RESPONDER HEALTH

**NEW**

RW13460  
LIEUTENANT'S PACK



RW13160  
CHIEF'S PACK



## RESPONDER WIPE FEATURES

- Designed specifically to meet firefighters needs
- Wipes effectively clean dirt, oil, soot and other hydrocarbons from the skin
- Formulated with Micellar Water, an innovative cleansing compound that effectively dissolves hydrocarbons
- Micellar Water returns much needed hydration to parched skin
- Two wipe sizes: Extra Large 30 x 60cm (RW13160) and Regular 20 x 20cm (RW13460)
- Two packaging options: 15 Individually packaged wipes (RW13160) and 20 wipes in dispenser pack (RW13460)
- Resealable packs prevent wipes drying out / wastage
- 3 year shelf life



**PARTICULATE PROTECTION**



**SAFE CLEANING OF FACE & NECK AREA**



**ENDORSED BY HEALTHY FIREFIGHTERS**

### PRODUCT SPECIFICATIONS

|               |  |
|---------------|--|
| Product Code  | RW13160 - Chief's Pack<br>RW13460 - Lieutenant's Pack  |
| Options       | Chief's Pack (15 Individually packaged, extra large wipes)<br>Lieutenant's Pack (20 dispenser pack, regular wipes) |
| Certification | Healthy Firefighter Approved Product   |

*^ Please specify options when ordering*

## FAST & EASY ON THE SCENE CLEAN

Responder Wipes® have been designed and formulated specifically to meet firefighters unique needs.

Infused with Micellar Water, the wipes effectively clean dirt, oil, soot and other hydrocarbons from the skin. Micelles not only removes toxins and contaminants but also returns much needed hydration to the skin that is lost while working in hot and demanding conditions.

Their convenient packaging options reduce waste and makes Responder Wipes® perfect for use while still attending an incident.



KL200  
MEDIUM FIT



## LIFE LINERS PARTICULATE BLOCKING FLASH HOOD

The Life Liners particulate blocking flash hood is designed to deliver both comfort and protection while blocking potentially harmful carcinogens from entering the body via absorption through the skin.

- Two piece design with 15cm front with 20cm back
- Separate head with sewn on back and front bib. Back of head ends at the nape of the neck for improved fit and comfort
- Easy-Seal Face opening that goes on easy and seals tight.
- 100% Nomex® thread
- Outer Layer Fabric: 49% Kermel / 49% Lenzing FR/ 2% Spandex  
Inner Layer Fabric: Stedair Prevent
- All head and bib seams are sewn with a flat lock stitch
- 3.8cm binding sewn to hem through folder with a three thread cover stitch to create a 1.25cm finished bound hem



PARTICULATE PROTECTION



THREE SIZES  
SMALL, MEDIUM  
& LARGE



DUAL LAYER CONSTRUCTION

### PRODUCT SPECIFICATIONS

|                |                         |
|----------------|-------------------------|
| Product Code   | KL200                   |
| Colour Options | Blue & Tan              |
| Application    | Structural Firefighting |
| Sizes          | Small, Medium & Large   |
| Certification  | NFPA 1971:2018          |

^ Please specify a size when ordering



**NEW**



**BRISTOLHOOD6**  
THL 469 (W/m<sup>2</sup>)  
MEDIUM FIT



**BRISTOLHOOD7**  
THL 438 (W/m<sup>2</sup>)  
LARGE FIT

## BRISTOL NANOFLEX FLASH HOOD

The NanoFlex particulate blocking flash hood provides the comfort and protection you would expect from Bristol Uniforms while striking the perfect balance between mitigating heat stress and filtering harmful particulates found on the fire ground.

- Head design: Separate head with sewn on back and front bib
- Back of head ends at the nape of the neck for improved fit and comfort
- All head and bib seams are sewn with a flat lock stitch
- 100% Nomex<sup>®</sup> thread
- Red Nomex<sup>®</sup> thread clearly indicates the outside of the hood
- Available in Nanoflex Nomex<sup>®</sup> (BRISTOLHOOD6) and Nanoflex PBI<sup>®</sup> (BRISTOLHOOD7) for additional protection against flashover
- Each hood is labelled with a label with all four label edges sewn to the hood, identifying material contents, certification, lot#, date of manufacture, and care instructions
- Total Heat Loss: NanoFlex Nomex<sup>®</sup> (BRISTOLHOOD6) 469 (W/m<sup>2</sup>), NanoFlex PBI<sup>®</sup> (BRISTOLHOOD7) 438 (W/m<sup>2</sup>)
- Hood weight: NanoFlex Nomex<sup>®</sup> (BRISTOLHOOD6) medium 177g | large 185g, NanoFlex PBI<sup>®</sup> (BRISTOLHOOD7) medium 174g | large 178g



**PARTICULATE PROTECTION**



**TWO SIZES MEDIUM & LARGE**

### PRODUCT SPECIFICATIONS

|               |  |
|---------------|--|
| Product Code  | BRISTOLHOOD6<br>Nanoflex / Nomex <sup>®</sup><br>BRISTOLHOOD7<br>Nanoflex / PBI <sup>®</sup> |
| Application   | Structural Firefighting  |
| Sizes         | Medium & Large   |
| Certification | EN13911:2017<br>*NFPA 1971:2018  |

^ Please specify a size when ordering

\* Certification pending

**DOT-01**  
ALL ROUND &  
PROTECTIVE  
CLOTHING



**DOT-02**  
EQUIPMENT



## DOT SYSTEMS STORAGE DEVICES

The DOT system incorporates storage devices for contaminated protective clothing and equipment. DOT Bags are encapsulation systems developed for fire and rescue personnel - reducing exposure from contaminated PPE during handling and transport.

DOT bags are easy to work with, safe and specially adapted for fire and rescue vehicles.

- Available in two styles: DOT-01 All Round and DOT-02 Equipment
- For the safe storage and transportation of contaminated PPE
- Made from Polyester reinforced with polyvinyl chloride
- Can be cleaned and reused
- Compact shape for easy transport or storage
- DOT-02 features a handy contamination indicator on the handle which can display green for clean or red for soiled



**CLEANING &  
MAINTENANCE**



**DECONTAMINATION**



**ENDORSED  
BY HEALTHY  
FIREFIGHTERS**



**SCAN THE QR CODE  
FOR VIDEO CONTENT**

### PRODUCT SPECIFICATIONS

|              |  |
|--------------|--|
| Product Code | DOT-01 - DOT All Round & Protective Clothing<br>DOT-02 - DOT Equipment |
| Application  | Structural Firefighting  |

*^ Please specify options when ordering*

**NEW**



## RED RACK WASHING EXTRACTOR

A solution for local routine washing that will accommodate 1-2 complete sets of structural firefighting garments.

- Follows NFPA 1851 guidelines
- Can wash 1-2 sets of structural PPC per load
- Full wash cycle: 25-35 minutes
- Patented tub design
- Stainless steel inner and outer tubs
- Easy soft-mount installation
- No transmission or agitator to replace and no lower water seals
- Fewer moving parts results in longer life expectancy
- Complete with manual /manufacturer's warranty
- 65 x 67.5 x 105cm (height 140cm with top load door up)
- Weight: 87kgs
- Made in the USA

**NEW**



## RED RACK DRYING CABINET

A safe drying solution with simple controls and factory preset temperatures. This cabinet ensures proper drying temperature for each item of PPC. The Red Rack drying cabinet will accommodate two full sets of structural PPC.

- Follows NFPA 1851 guidelines
- Factory preset temperatures
- Easy to use
- Comes complete with: (2) PPE hangers, hanging pole, (2) built-in door racks and (2) flat shelves
- Made of heavy-duty steel construction with white powder coated finish
- Additional accessories available
- Complete with manual /manufacturer's warranty
- 169 x 57.5 x 62cm
- Weight: 88kgs
- Made in the USA

### PRODUCT SPECIFICATIONS

|              |           |
|--------------|-----------|
| Product Code | RAKPPE-EW |
|--------------|-----------|

### PRODUCT SPECIFICATIONS

|              |           |
|--------------|-----------|
| Product Code | RAKPPE/2G |
|--------------|-----------|

*\* Lead time & additional freight charges apply*

**NEW**



## SC-14 ALL-PURPOSE CLEANER

SC-14 is an all-purpose cleaner and degreasing agent that not only removes dirt, grease and grime - but also cleans away contaminants and carcinogens.

SC-14 has been formulated to remove dirt and contaminants without compromising the integrity of the item your cleaning.

- For routine cleaning of helmets, equipment and surfaces
- Easy to use, all purpose cleaning and degreasing solution
- Effective on grease, grime soil and hydrocarbons
- Cleans away potentially harmful contaminants and carcinogens
- Compact shape for easy transport or storage
- Environmentally friendly, biodegradable and non-corrosive formula
- Free from potentially damaging sodium hydroxide and sodium metasilicate
- Available in a convenient 946ML spray bottle
- Tested and approved by the industry leading helmet manufacturer - Pacific Helmets

| PRODUCT SPECIFICATIONS |  |
|------------------------|--|
| Product Code           | SC-14F-032-6   |
| Options                | SC-14F-032-6 - All Purpose Cleaner - 946ML Spray Bottle (Box of 6 bottles) |

**NEW**



FS-C-001-4  
TECHNICAL TEXTILE DETERGENT

FS-C-032-6  
PRE-TREATMENT SPRAY

## CITROSQUEEZE® PRE-TREATER AND TECHNICAL DETERGENT

NFPA 1851 compliant CITROSQUEEZE® is the recommended technical detergent available for safely cleaning oil, soot, grease and other contaminants from all types of PPC and FR clothing.

- For routine cleaning of all PPC and FR clothing
- Easy to use, high performance cleaning solution
- Effective on dirt and grime
- Environmentally friendly, biodegradable formula
- 20 years / 2 million sets of gear without a single incident of damaging apparel
- Available in a 946ML spray bottle "pre-treatment" or a bulk 3.78L jug
- Tested and approved by the industry leading textile manufacturers: Bristol Uniforms, Dupont - for cleaning Nomex®, Southern Mills - for cleaning PBI® and Kevlar® fabrics, W.L. Gore & Assocs. - (Germany) for cleaning Gore-tex®, 3M Products - for cleaning specific Scotchlite® Retroreflective Fire Coat Trims

| PRODUCT SPECIFICATIONS |  |
|------------------------|--|
| Product Code           | FS-C   |
| Options                | FS-C-032-6 - Pre-Treatment - 946ML Spray Bottle (Box of 6 bottles)<br>FS-C-001-4 - Technical Textile Detergent - 3.78L Jug (Box of 4 jugs) |
| Certification          | NFPA 1851  |

^ Please specify options when ordering



**WHAT IS  
PAC+CARE?**



## INTRODUCING PAC+CARE

Australian federal and territory legislation requires fire and emergency services to safeguard the health and safety of their employees at work. This is enshrined in Australian Workplace Health and Safety and Occupational Health and Safety regulations. Agencies have a responsibility to supply their employees with Personal Protective Equipment and Clothing which meets all the necessary standards and performance requirements, have in place systems which ensure that personal protection is regularly monitored, inspected and maintained, and is fit for purpose throughout its operational life.

Pac Fire Australia's Managed Service, PAC+CARE, is designed to provide a comprehensive and integrated outsourced facility for agencies through which Australian Workplace Health and Safety (WHS) and Occupational Health and Safety (OH&S) regulations are met.

PAC+CARE's flagship centre is based in Yatala Queensland. Here, trained staff are allocated to the provision of care for the lifetime of customer's protective equipment and clothing and armed with the most up-to-date knowledge and resources to ensure that PPE/C worn by agencies is fully maintained for operational purpose while achieving optimum longevity.



**“** Soiled PPE reduces insulation and is more likely to conduct heat and electricity. This can result in PPE becoming flammable. Contaminants and particulates accumulated on PPE can also negatively impact firefighter health. **”**



## PAC+CARE SERVICES



SIZING OF PERSONNEL



DELIVERY  
ARRANGEMENT



BARCODE / RFID  
FITTING



ADVANCED CLEANING &  
DECONTAMINATION



ADVANCED INSPECTION



REPAIR



TRACK AND TRACE



RECYCLING OF  
GARMENTS



SECURE DISPOSAL

## ADVANCED WASH

PAC+CARE's Advanced Wash and Decontamination programs, detergents and procedures are certified NFPA 1851: 2014 compliant and certified by Bristol Uniforms and Pacific Helmets. PAC+CARE utilizes best practice methodology, state of the art cleaning and filtration technology to ensure materials and componentry are not damaged throughout the cleaning process while ensuring a sustainable environmental footprint.

## ADVANCED INSPECTION

The Advanced Inspection is to ensure that protective clothing and equipment remains fit for purpose throughout its operational life. Our Advanced Inspections are in line with NFPA 1851:2014, the manufacturers SOPs for inspection, and are always carried out by a trained professionals. All serviced equipment and clothing is issued with a PAC+CARE Fit For Purpose Certificate, while the item's status is recorded on the PAC+CARE laundry software system, Bundle Connect.



## REPAIR

Carrying out repairs is a key part of ensuring personal protection remains fit for purpose and compliant with the standard it was manufactured to while early damage detection if acted upon, will ultimately increase the longevity of PPE. PAC+CARE is an NFPA 1851:2014 approved Independent Service Provider certified by Bristol Uniforms and Pacific Helmets. All repairs are carried out in accordance with their construction methods, using original componentry and to a quality and standard our manufacturers deem fit.

## CONDITIONAL CODING

After a repair is carried out, each item of personal protection is subject to an assessment of its condition, and ultimately when it should be retired from service.

## SECURE & SAFE DISPOSITION

In the event that protective clothing or equipment is assessed as unfit for purpose, it will follow the NFPA 1851:2014 compliant pathway for secure and safe disposition of PPC/E which involves:

- The item being tagged for disposal
- The item will be destroyed in a secure environmentally sensitive method
- Certificate of Destruction issued and information logged on Bundle Connect

## TRACK & TRACE

PAC+CARE provides an effective secure tracking solution which includes the ability to track each item of personal protection including:

- Specification (manufacturer, delivery date, batch number)
- Service history (date of issue, name of wearer)
- Information relating to care including cleaning, decontamination, storage
- Records of maintenance including inspection, damage, repair and disposal
- Difficulties arising from the use of the equipment and/or clothing
- Retrofitting of RFID and/or bar code





## SIZING OF PERSONNEL

The correct fit is an essential component in ensuring firefighters experience optimum protection, mobility and comfort when wearing their structural ensemble. PAC+CARE offers sizing and measuring support including sizing sets, user friendly documentation to capture accurate fits for helmets, flash hoods, gloves, firefighting clothing and footwear. Trained PAC+CARE personnel are available to visit agencies locations and provide a comprehensive measuring service.

## PROFESSIONAL DEVELOPMENT

Agencies can access a wealth of information, instruction and training which includes:

- PPE/C limitations in use
- Donning and Doffing
- How it should be worn
- Care and Maintenance
- Procedures for emergency replacement
- Procedures for advanced cleaning

- Repair process
- Contact points and details
- Firefighter awareness of appropriate compatibility of all elements
- Support with design and implementation or routine inspection

## ESTABLISHING ON STATION CLEANING SYSTEM

PAC+CARE provides a range of options for local routine washing and drying which include:

- Washing machines
- Dryers
- Drying cabinets
- Detergents and Pre-Treatments
- Storage Solutions
- PPE Baths



## PAYMENT TERMS

- The establishment of a credit account is at the discretion of Pac Fire Australia.
- Standard terms for credit accounts is payments within 30 days.
- Pac Fire Australia may close or put a hold on credit accounts at any time.
- Pac Fire Australia reserves the right to close any accounts which have not been used in 12 months.
- If a credit account has not been established, Pac Fire Australia will require payment for goods prior to shipment. Payment can be made via credit card (Visa or Master Card), electronic funds transfer (EFT) or cheque.
- If payment is made by EFT or cheque, funds must be cleared into the Pac Fire bank account before goods can be dispatched.

## FREIGHT

- Pac Fire Australia will arrange freight of goods unless a specific carrier or mode of transport has been nominated by the purchaser.
- Pac Fire's responsibility for the delivery of the goods ends when the elected freight provider has taken possession of the goods

## INSPECTION

- The buyer shall examine the products upon receipt and Pac Fire shall not be responsible for mis-delivery, shortage, defect or damage to the products unless the purchaser notifies Pac Fire within seven (7) days from the date of delivery.

## RETURNS

- Pac Fire may, in its absolute discretion, accept the return of standard products to the credit of the purchaser provided prior written approval from one of its authorised representatives is obtained. Goods are to be returned to the nearest Pac Fire branch, unused, undamaged, if possible in original packaging and at the expense of the purchaser within fourteen days of taking receipt of the goods.

## TRADEMARKS

3M is a trademark of the 3M Company

DuPont, Kevlar and Nomex are trademarks or registered trademarks of E.I. du Pont de Nemours and Company

HAINSWORTH is a trademark or registered trademark of A W Hainsworth & Sons Limited

PBI and PBI MAX are trademarks or registered trademarks of PBI Performance Products, Inc

OTEP and DSVS are trademarks or registered trademarks of Pacific Helmets (NZ) Ltd

GORE, GORE-TEX, WINDSTOPPER, CROSSTECH, DRYLOCK, AIRLOCK and PARALLON are trademarks or registered trademarks of W. L. GORE & ASSOCIATES, INC.

Blue Tang, GATORLITE, HYDRALLOY and Vizion are trademarks or registered trademarks of Underwater Kinetics, LP

Eflare is a trademark or registered trademark of Eflare Corporation Pty Ltd

Quick Fist is a registered trademark of End Of The Road, Inc.

ResQMe is a registered trademark of Laurent Colasse

CITROSQUEEZE is a registered trademark of Solutions Safety Products & Services, Inc.

Red Rack is a trademark or registered trademark of Groves Inc

Meret & Omni are trademark or registered trademark of Cramer-Decker Industries

## SPECIAL THANKS

To our suppliers who provided product images for inclusion in the catalogue.



62 Link Dr  
YATALA QLD 4207

[WWW.PACCARE.COM.AU](http://WWW.PACCARE.COM.AU)

# PACFIRE

## OUR LOCATIONS

QUEENSLAND BRANCH  
62 Link Dr  
YATALA QLD 4207

PH: +61 7 3441 7100

SOUTH AUSTRALIA BRANCH  
4/48 Barwell Ave  
KURRALTA PARK SA 5037

PH: +61 8 8297 1477

NEW ZEALAND BRANCH  
315 Heads Rd  
WHANGANUI 4541  
NEW ZEALAND

PH: +64 6 344 7391

1300 731 800

[sales@pacfire.com.au](mailto:sales@pacfire.com.au)

[WWW.PACFIRE.COM.AU](http://WWW.PACFIRE.COM.AU)

