

# URETHANE FLOOR BUNDING

## INSTALLATION INSTRUCTION

### PREPARATION

The ground surface where the floor bunding will be installed must be clean and free of oil and grease and any other contaminate that may affect the adhesion. The sealant provided in the Chatoyer installation kit is not recommended for use on bitumen, asphalt or wash bay areas. To optimise the seal between the ground and floor bunding, we recommend using a primer to seal the ground surface.

**NOTE:** URETHANE EXPANDS IN HOT CONDITIONS OR DIRECT SUNLIGHT. INSTALLATION IN THESE CONDITIONS SHOULD BE DONE WITH CARE.

1. Using a chalk line, mark the surface where the Urethane Floor Bunding (UFB) is to be installed.
2. Using the chalk line as a guide, measure the length required for each section of the bund and cut UFB to match.
3. Lay UFB centrally on the ground in the correct position ensuring that the ends of each piece line up. Leave a minimum 5mm gap between each section for sealant bead. This gap may be increased to 8mm to allow for urethane expansion in hot conditions.
4. Using the predrilled holes within the UFB as a guide, drill 8mm diameter hole into ground surface approximately 60mm deep and vacuum away resulting dust.
5. Run masking tape across the top edge of the ends of adjoining sections. Apply a 5mm bead of urethane sealant liberally to the bottom of the UFB in a zigzag pattern. Avoid applying it in straight line. Ensure no air pockets form beneath the bund. Generously apply sealant to the ends of each adjoining section.
6. Place the prepared section of UFB onto substrate, insert concrete fasteners through the UFB and partially tighten.
7. Repeat steps 3-6 until all sections have been secured to the substrate.
8. Run a single 5mm bead of urethane sealant along the inside edge of the bund system to provide a final seal – this will ensure a bund is created.
9. Fully tighten the concrete fasteners making sure the top of the concrete fastener is below the surface of the UFB. Do not over tighten the bolts to allow for the expansion of the urethane. Bolts that are too tight might lead to warping of the installed urethane. In hot condition, loosen the bolts further.
10. After each section has been fastened down, smooth off the excess adhesive on joins and remove tape. Allow the urethane bund to cure for 24 hours before standing or driving over it. Please note that if using primer and/or Tank N the curing time may be longer. Please refer to Sikaflex product instructions.

#### Disclaimer

The Manufacturer and its distributors are not liable for any product failures relating to installation, deliberate misuse of the product, or damage caused by vehicle usage or accidents. It is the owner's responsibility to ensure that all site engineering and safety standards are met during handling and installation, and where necessary, appropriate consultants are engaged to provide the necessary technical advice and to ensure that the substrate is structurally suitable for a secure and sealed bund.

# URETHANE FLOOR BUNDING

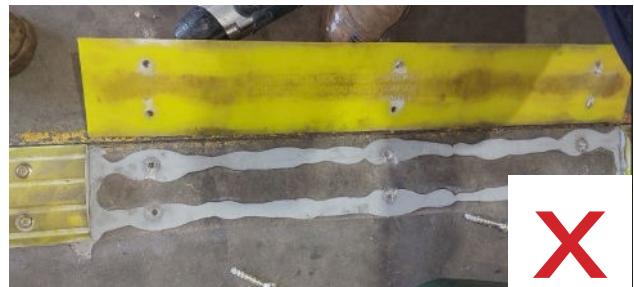
## INSTALLATION INSTRUCTION

### SEALANT APPLICATION



#### Recommended Application

Run a single zigzag bead of urethane sealant along the inside edge of the bund system to provide a final seal – this will ensure a bund is created.



#### Wrong Application

Avoid applying sealant in double single lines to prevent air pockets from getting trapped under the bund.

### FLOOR BUNDING BILL OF MATERIALS



Urethane Floor Bund 1,000mmL sections with 6 x predrilled holes



Concrete Fasteners 8mm x 60mm Zinc Anchor Screw x 6



11FC Sealant tube

#### Sealant Recommendations:

For extra chemical resistance or use with hydrocarbons, we recommend [Tank N](#) instead of 11FC  
For wash bay, wet area applications, we recommend using [Tank N](#) with [Primer-3 N](#) instead of 11FC.

#### Warning:

Sikaflex is a sealant, not an adhesive. Bolts hold the bunding down. Sealant provides the seal.

#### Disclaimer

The Manufacturer and its distributors are not liable for any product failures relating to installation, deliberate misuse of the product, or damage caused by vehicle usage or accidents. It is the owner's responsibility to ensure that all site engineering and safety standards are met during handling and installation, and where necessary, appropriate consultants are engaged to provide the necessary technical advice and to ensure that the substrate is structurally suitable for a secure and sealed bund.