

GRIPPS®

H02057

TAPE MEASURE LATCH

5.5 LBS

2.5 KG

MAX LOAD (D-RING)

1.5 LBS

0.7 KG

MAX LOAD (RETRACTOR)




ANSI/ISEA 121-2018 COMPLIANT



Engineered for use with GRIPPS® Tape Measure Catch, the Tape Measure Latch enables quick tethering and holstering of tape measures.

A mounted quick-connect platform lets you quickly secure a GRIPPS® Tape Measure when not used. The H02058 offers additional functionality compared to the H02057 with the Retractor and Tape Measure Catch included.

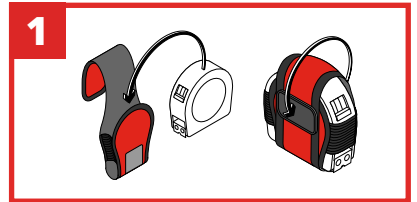
H02057 TAPE MEASURE LATCH

| | | |
|--|-----------------------------|---------------|
|  ANSI/ISEA 121-2018 COMPLIANT | 5.5 LBS | 2.5 KG |
| | MAX LOAD (D-RING) | |
| | 1.5 LBS | 0.7 KG |
| | MAX LOAD (RETRACTOR) | |

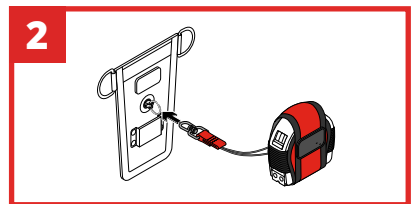
KEY FEATURES



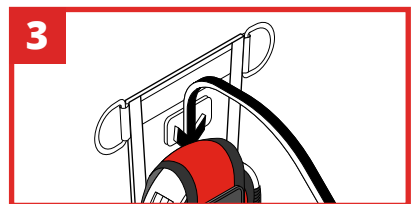
HOW TO USE



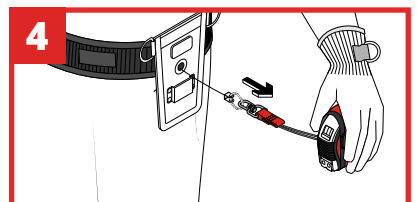
1 Push tape measure into catch, ensuring that the blade is below the elastic support strap. Pull over strap tightly to secure.



2 If using a GRIPPS® Swivel Catch, feed cord through D-Ring on the back of Tape Measure Catch. Then attach to the tool-ring from the retractor unit.



3 The Tape Measure Catch can now slide onto the Tape Measure Latch.



4 Attach holster to your work belt by sliding belt through the rear straps of the Tape Measure Latch Holster.

SPECIFICATIONS

| SKU | MAX LOAD (D-RING) | MAX LOAD (RETRACTOR) |
|--------|-------------------|----------------------|
| H02057 | 2.5KG 5.5LBS | 0.7KG 1.5LBS |