

GRIPPS®

**ANSI/ISEA
121-2018
COMPLIANT**

H01142 BELT-LOOP ANCHOR

Compatible with all 50mm/2.0" work belts, the Belt-Loop Anchor creates an instant load-rated tether anchor on your work belt.

Made from the same abrasion-resistant webbing as the GRIPPS® Webbing Tether range, the Belt-Loop Anchor is extremely hard-wearing.

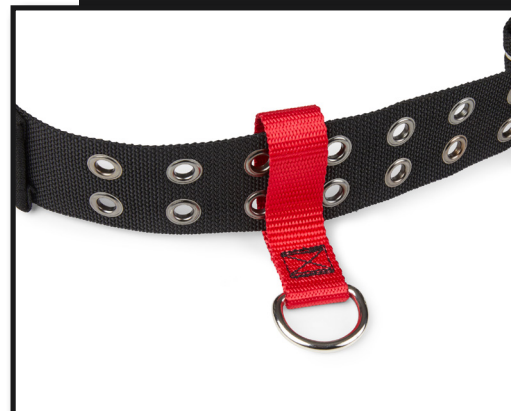
To use, simply thread your work belt through the Belt-Loop Anchor and connect your tether to the D-Ring.



5.5 LB

2.5 KG

MAX LOAD:



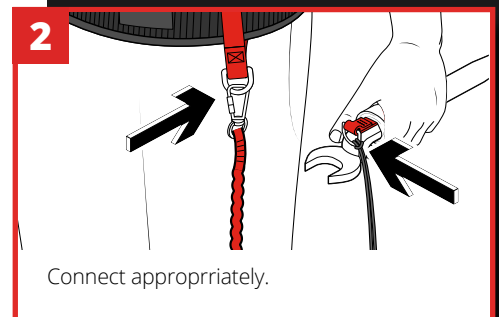
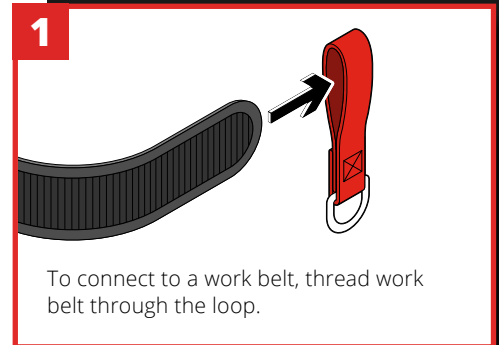
THE LEADERS IN FALLING OBJECT PREVENTION

GRIPPS.COM

KEY FEATURES



HOW TO USE



SPECIFICATIONS

SKU	MAX LOAD
H01142	2.5KG 5.5LBS